



CRC

for

Premium

Quality

Wool

# Gel Electrophoresis

Produced for the CRC for Premium Quality Wool undergraduate program by;  
Dr. Phil Vercoe, The University of Western Australia.

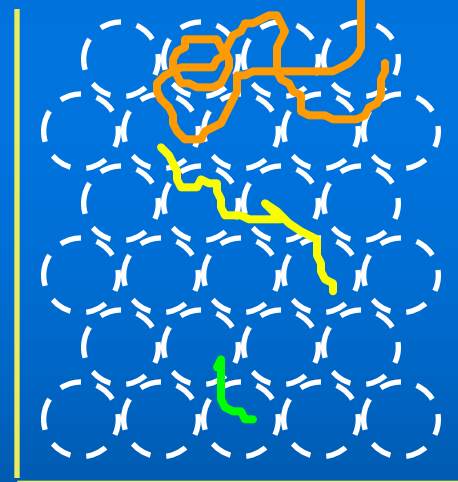
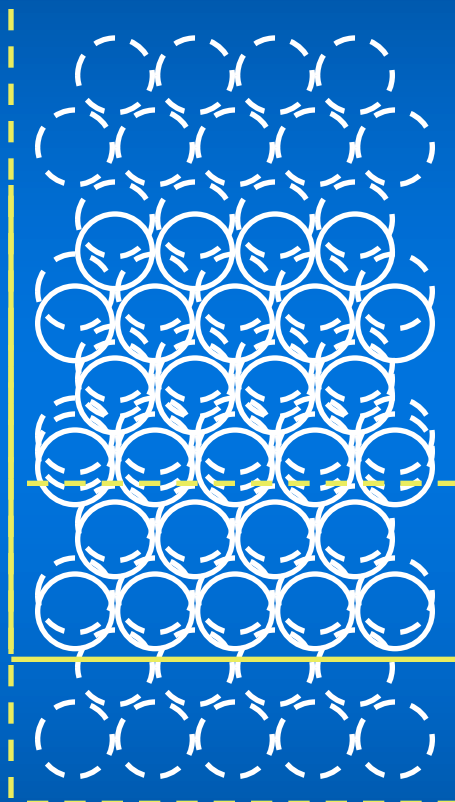
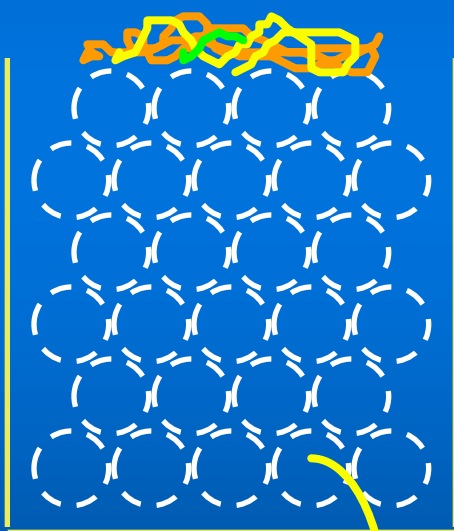


# Gel Electrophoresis

String

Tap

Smaller pieces of string tap down faster

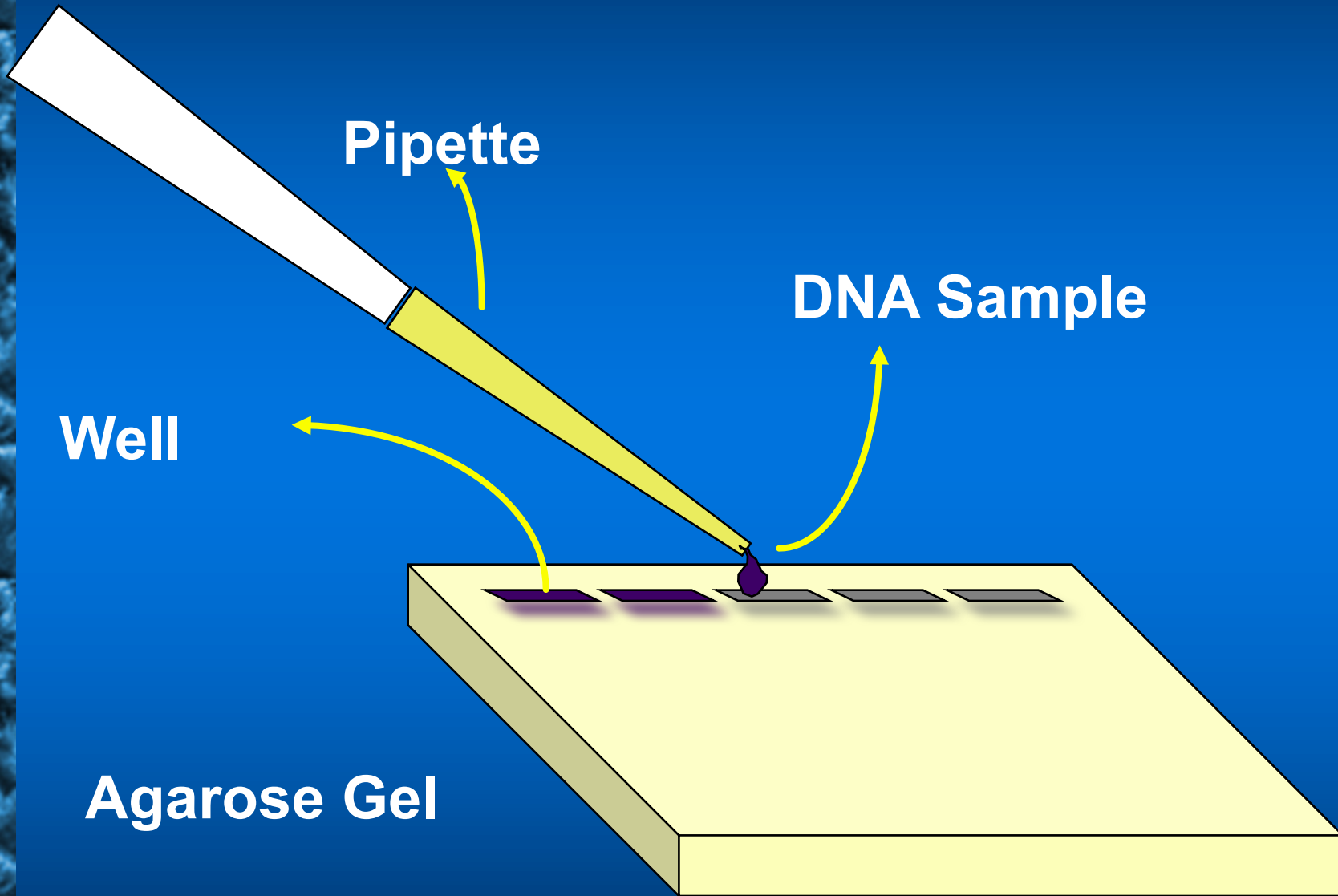


Porous Beads

CRC  
for  
Premium  
Quality  
Wool



# Gel Electrophoresis

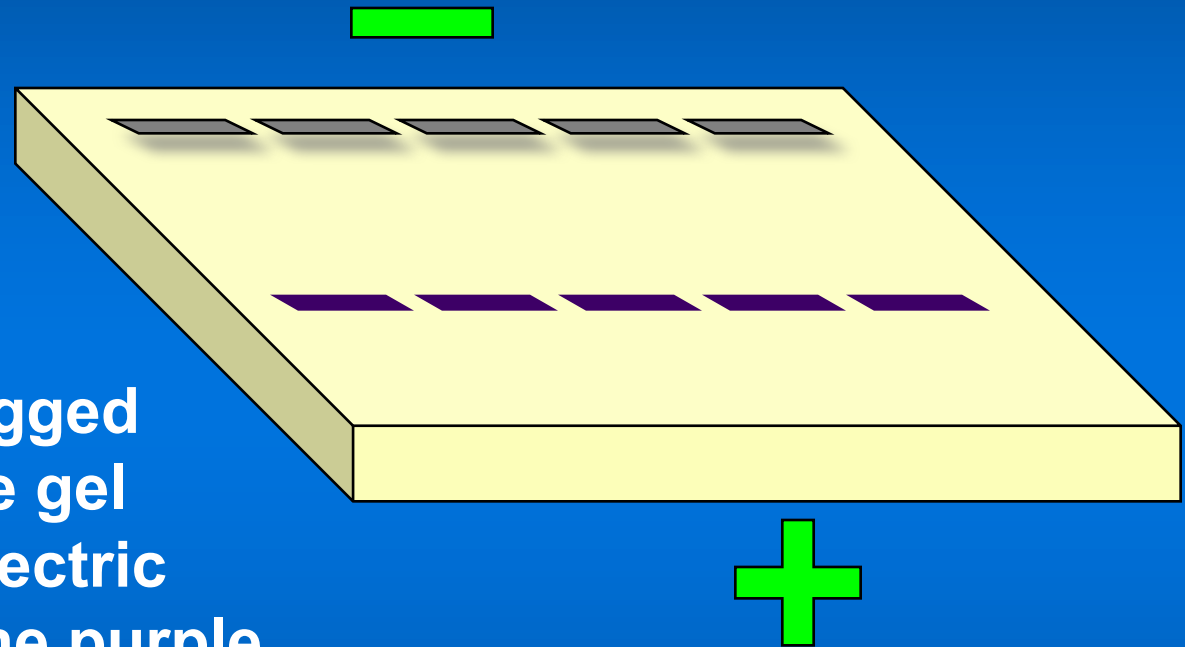


CRC  
for  
Premium  
Quality  
Wool

Agarose Gel



# Agarose Gel Electrophoresis



DNA is dragged through the gel using an electric current. The purple dye tells us how far the gel has run.

CRC

for

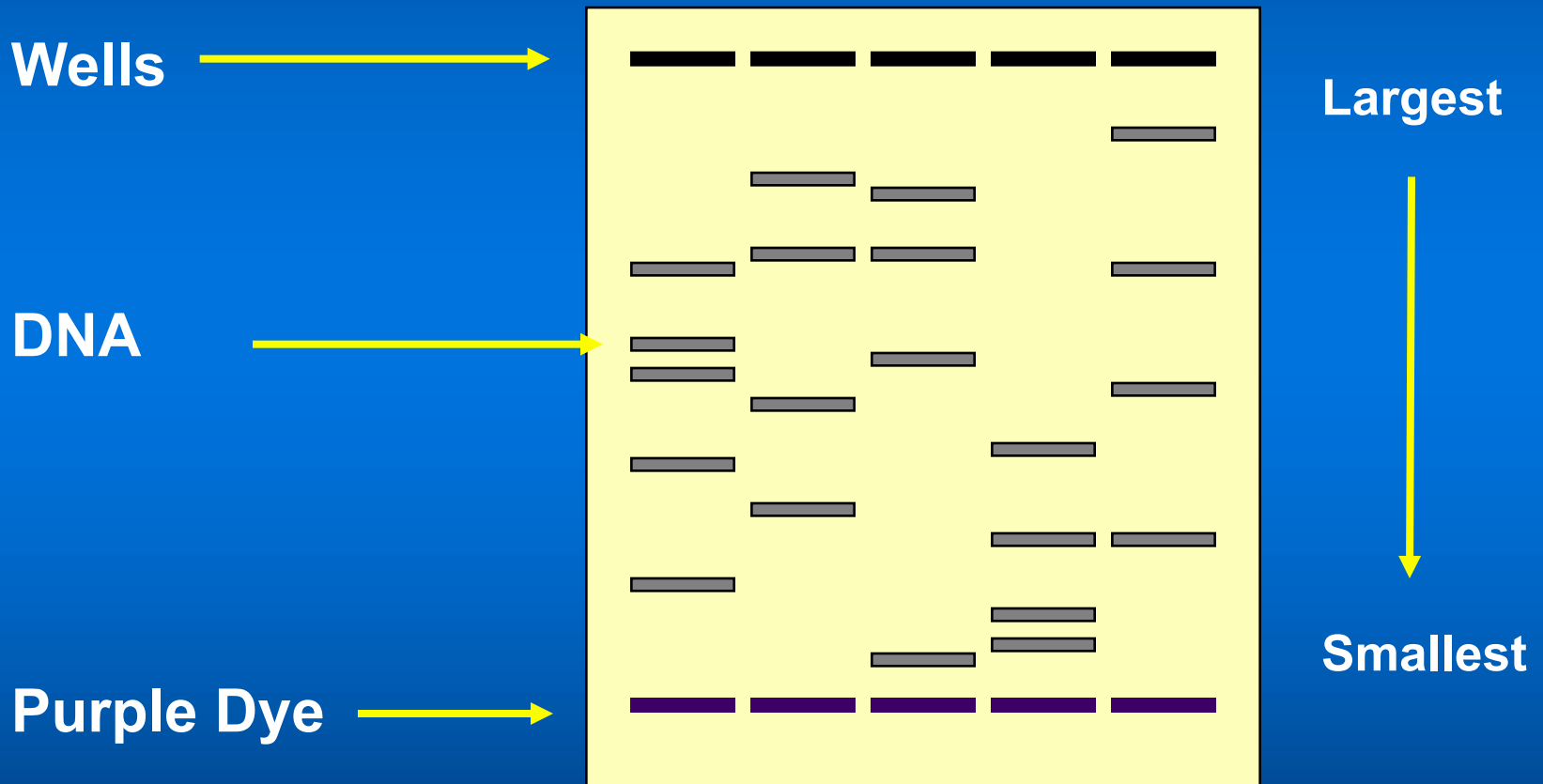
Premium

Quality

Wool



The agarose gel is stopped when the purple dye gets close to the end and stained with ethidium bromide. If the gel is viewed with UV light then the ethidium bromide fluoresces orange



CRC

for

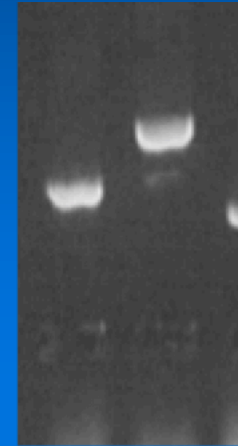
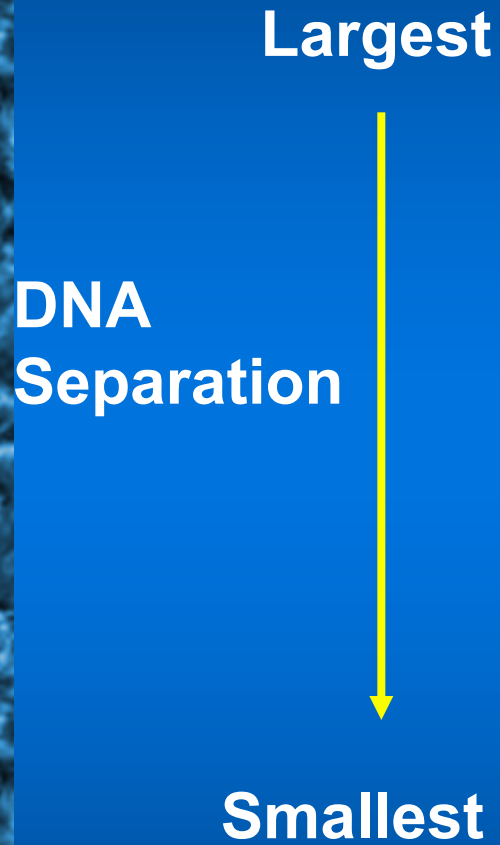
Premium

Quality

Wool



# Gel electrophoresis



- ← 10.0 kb
- ← 2.0kb
- ← 1.0kb
- ← 0.5 kb

CRC  
for  
Premium  
Quality  
Wool