



CRC

for

Premium

Quality

Wool

# Follicle Accessory Organs

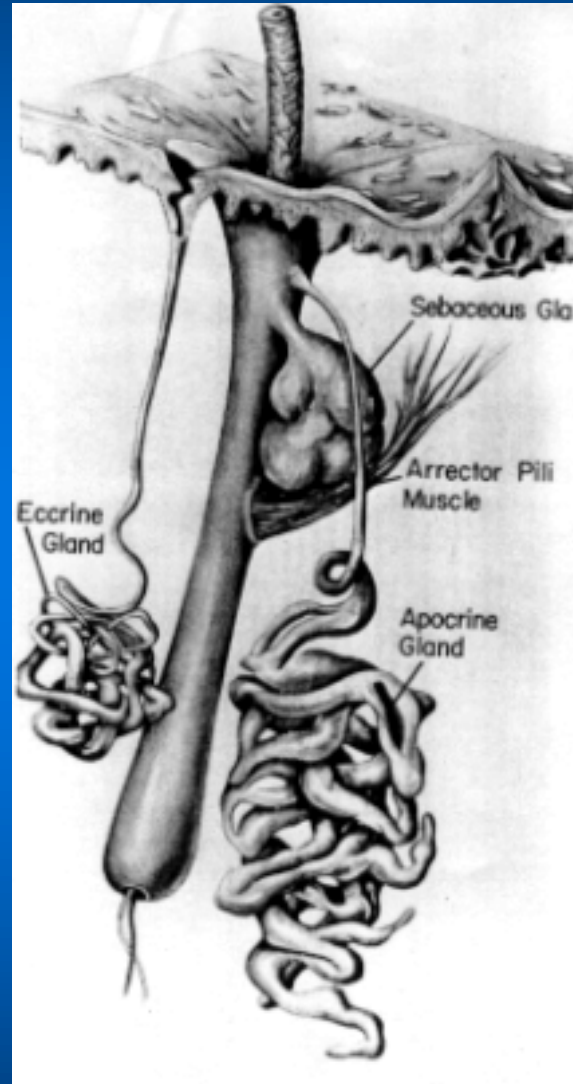
Produced for the CRC for Premium Quality Wool undergraduate program by;  
Dr. Janelle Hocking Edwards, The University of Western Australia.



# Follicle accessory organs

## Suint glands

- produce the suint (sweat) associated with wool
- in sheep the glands branch into the follicle canal
  - apocrine

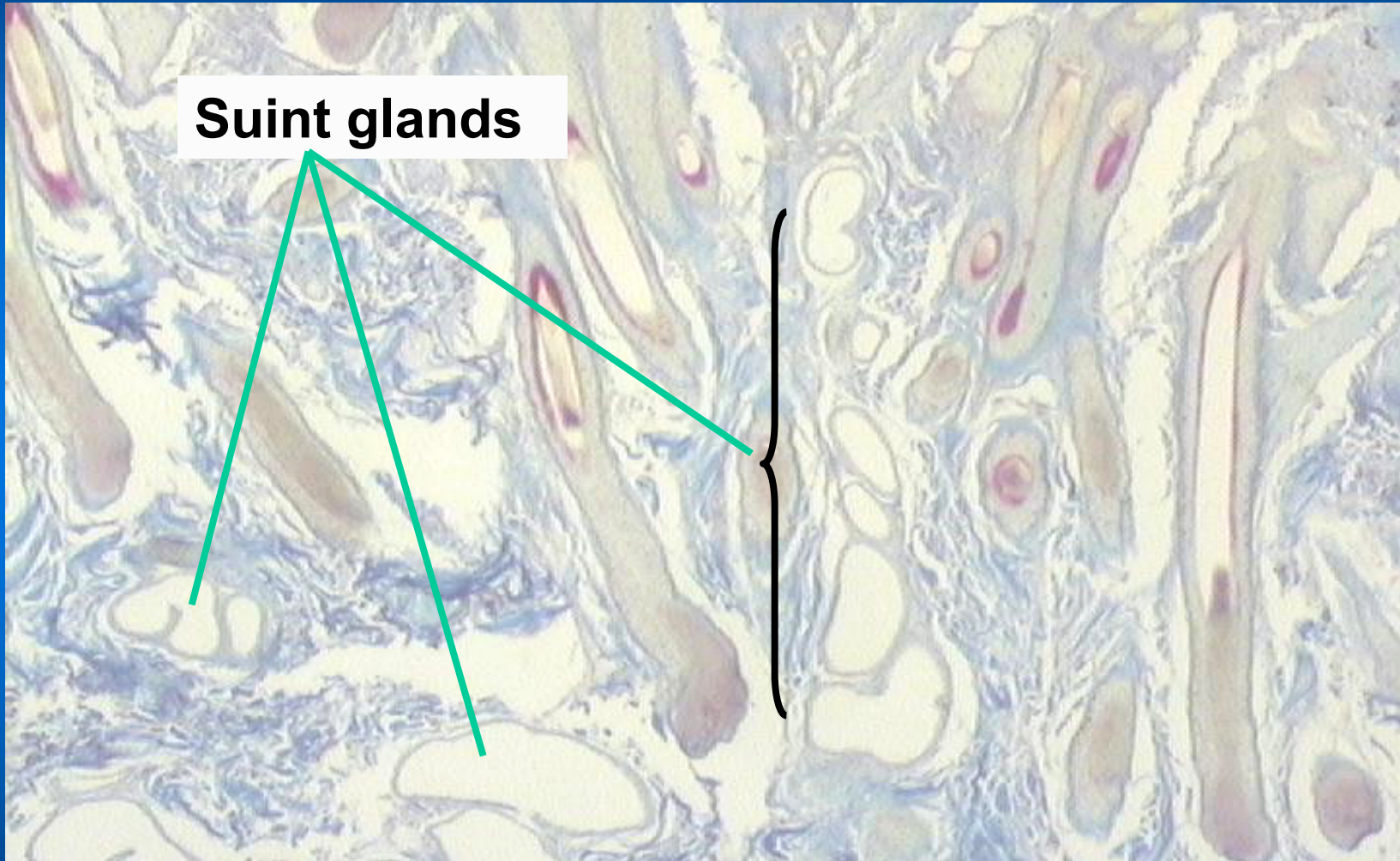


## Sebaceous glands

- produce the grease/wax associated with wool



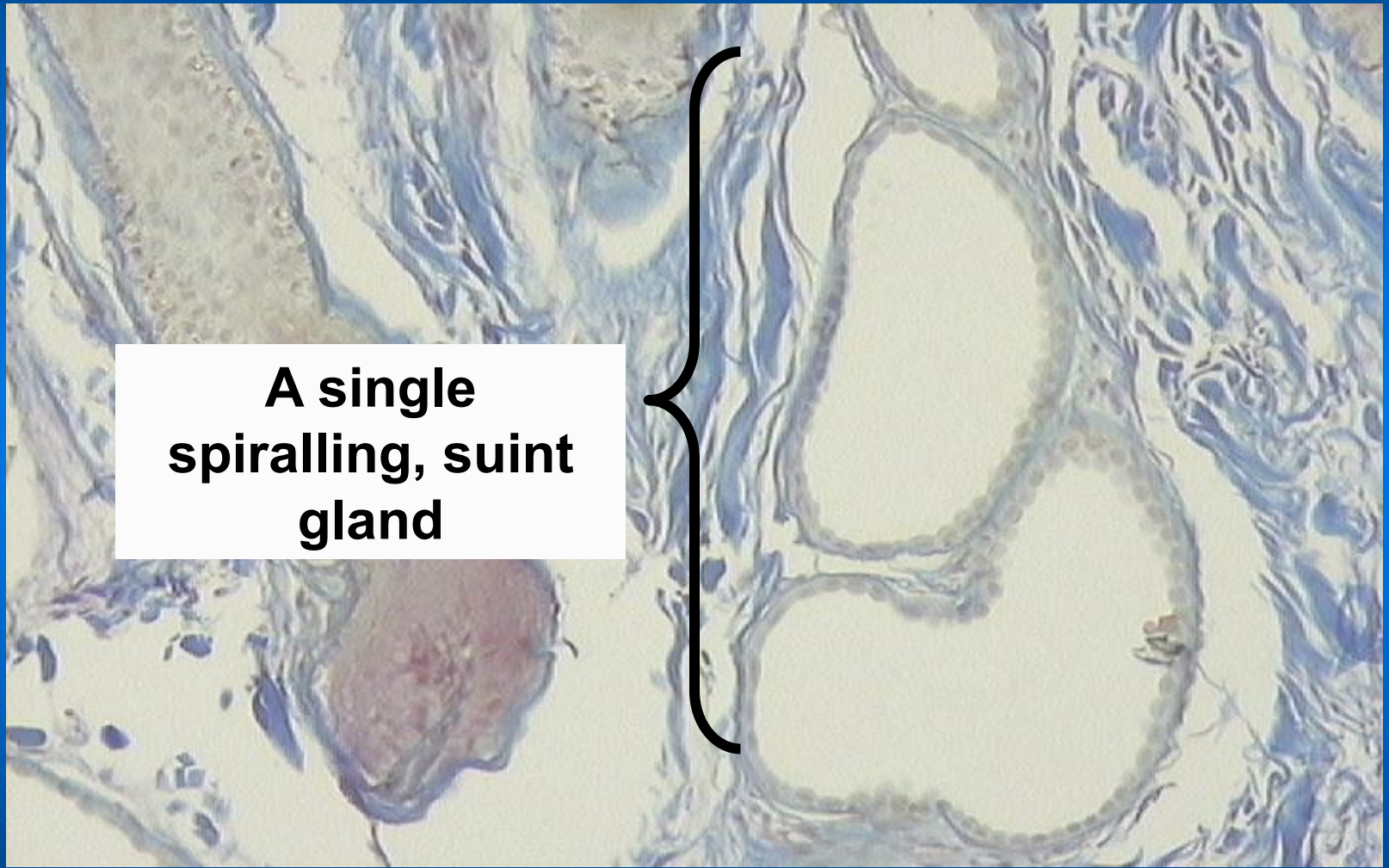
# Sweat glands in a Merino sheep



CRC  
for  
Premium  
Quality  
Wool



# Closer view of suint gland



**A single  
spiralling, suint  
gland**

CRC

for

Premium

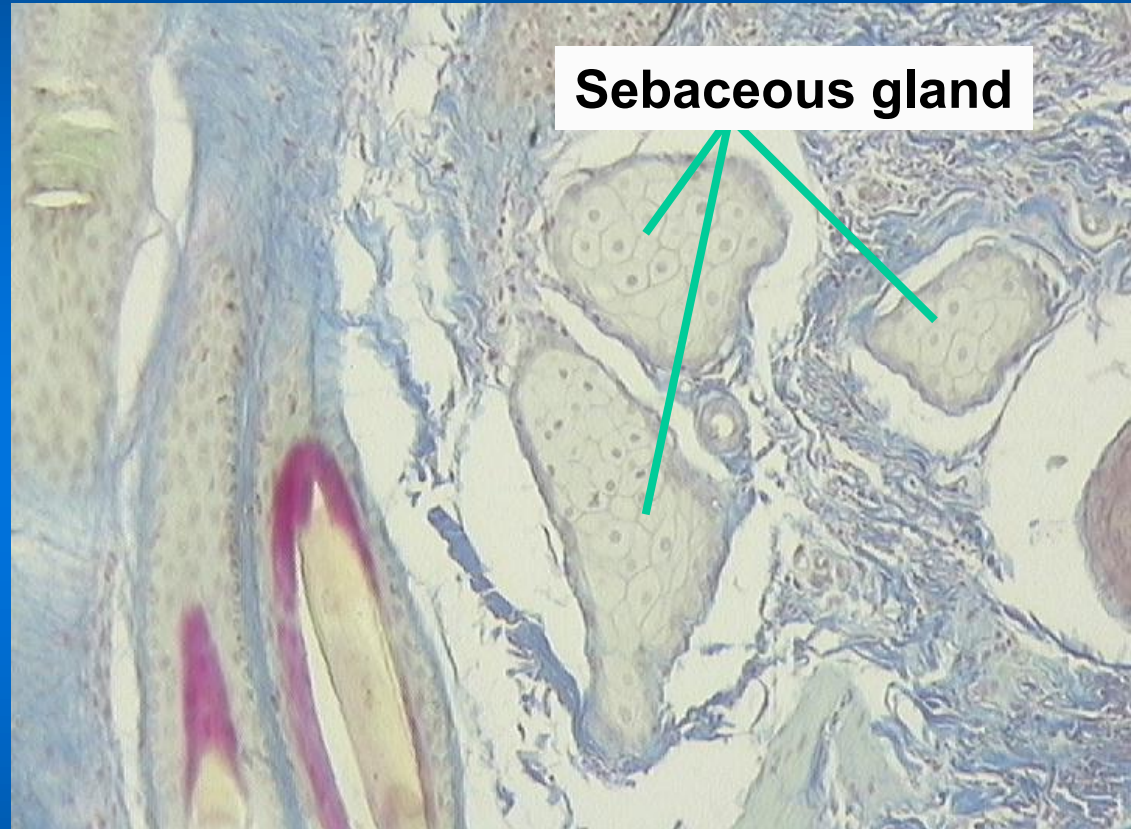
Quality

Wool



# Sebaceous glands

- Always associated with follicle
- Compound structure
- Lipid secreting



CRC

for

Premium

Quality

Wool