



CRC

for

Premium

Quality

Wool

Stem Cells in the Wool Follicle

Produced for the CRC for Premium Quality Wool undergraduate program by;
Prof. Phil Hynd, The University of Adelaide.



Location of follicle stem cells in Merinos

- Merino follicles are different to mice follicles
 - anagen is very long
 - no bulge region
- Identification of stem cells in Merinos
 - Stem cells stimulated to divide with TPA in sheep
 - Cells labelled with BrdU
- Label retaining cells found in the ORS in the upper neck of the follicle and the basal layer of the sebaceous glands

CRC

for

Premium

Quality

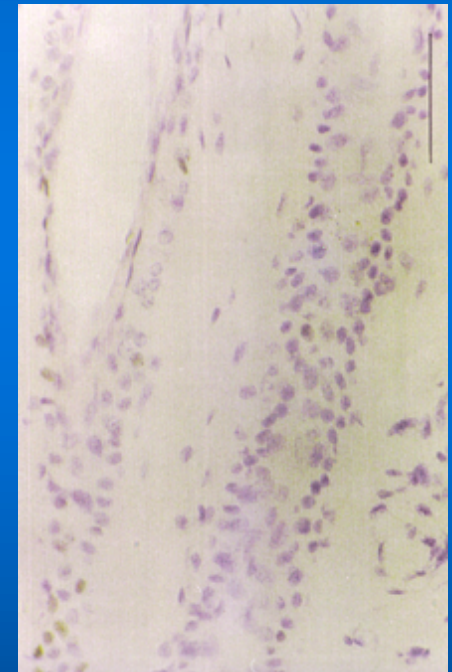
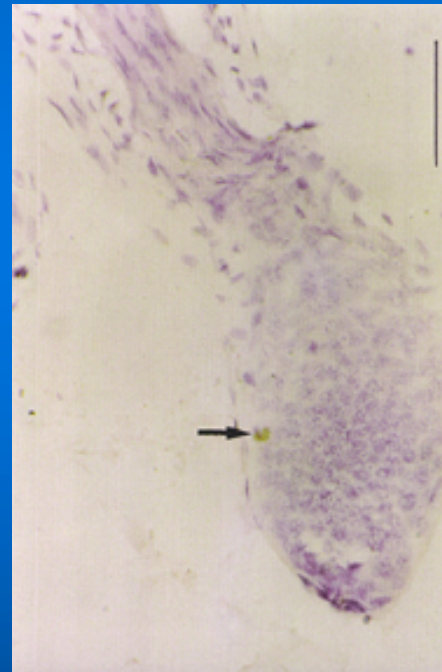
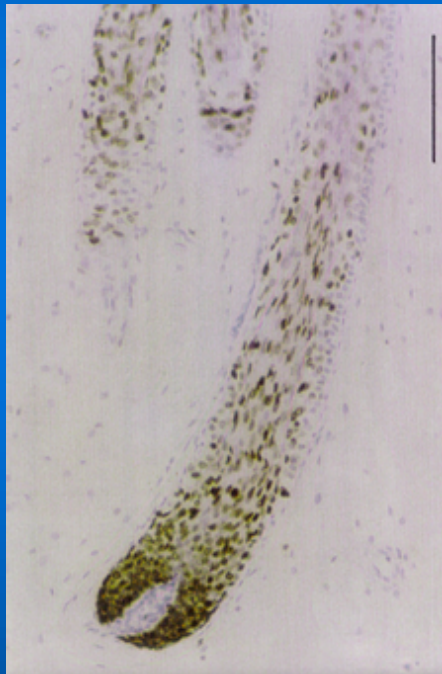
Wool



BrdU-labelling in Merino Follicles

14 days after
BrdU treatment
commenced

4 week chase period



Bulb and
lower follicle

Mid follicle

CRC

for

Premium

Quality

Wool



Label retaining cells in the upper ORS of wool follicle after 4 week chase period

CRC
for
Premium
Quality
Wool

