



CRC

for

Premium

Quality

Wool

Effect of Season and Nutrition on Follicle Shutdown

Produced for the CRC for Premium Quality Wool undergraduate program by;
Dr Tony Schlink, CSIRO Animal Production.



Effect of season on wool follicles

CRC

for

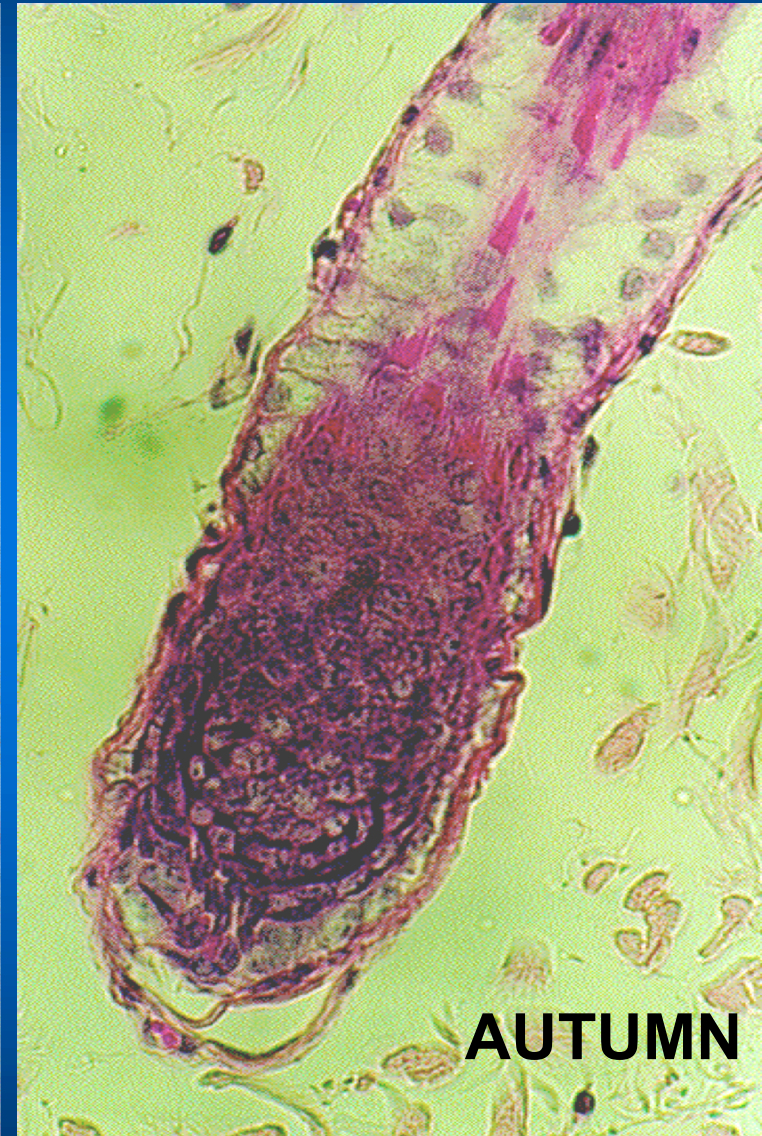
Premium

Quality

Wool



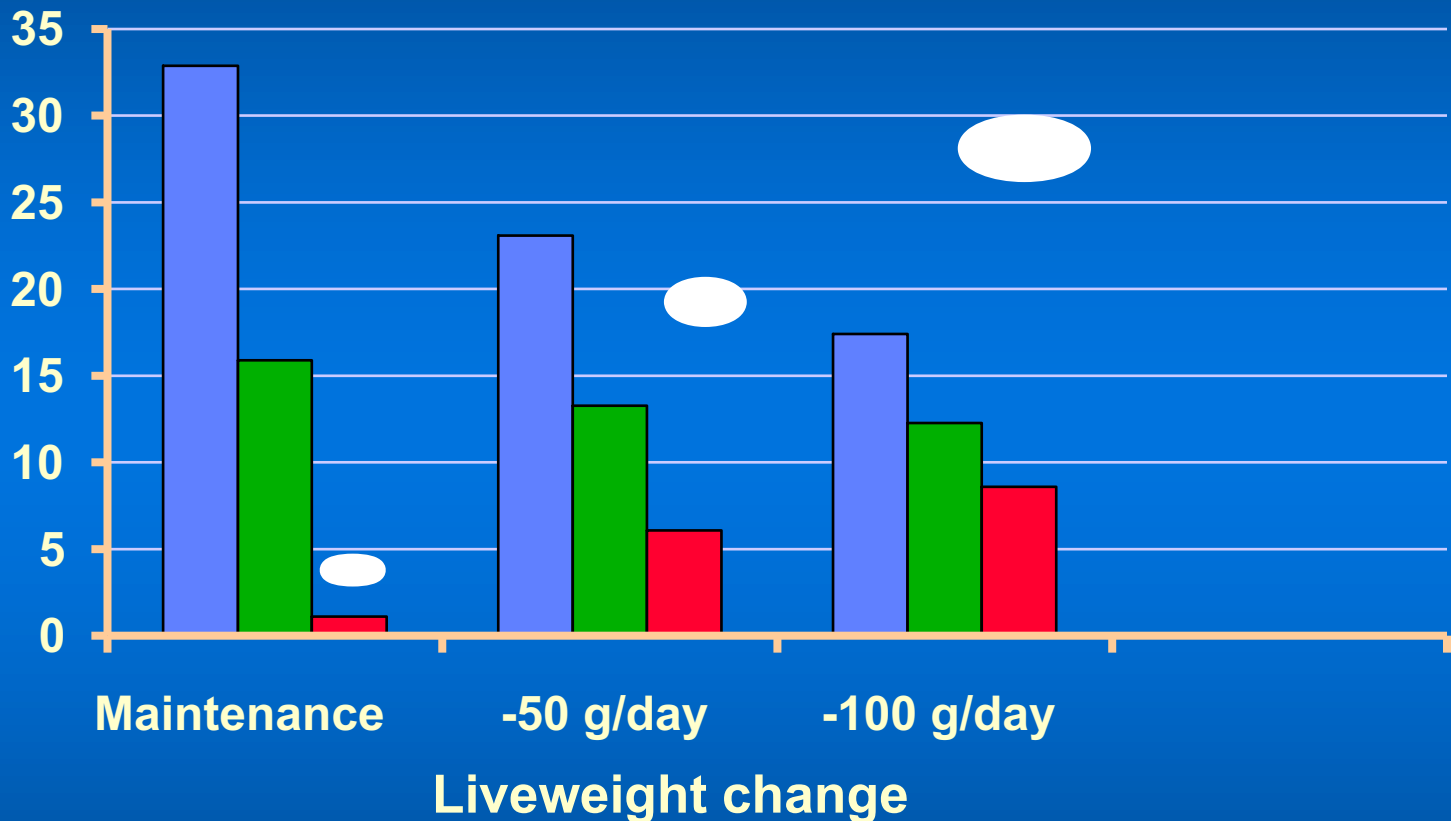
SPRING



AUTUMN



Effect of liveweight change on staple strength (SS), fibre diameter at the position of break (FD-POB), proportion of shed fibres and abnormal follicles.



■ SS ■ FD - POB ■ Shed Fibres(%)
● Abnormal follicles (%)

CRC
for
Premium
Quality
Wool

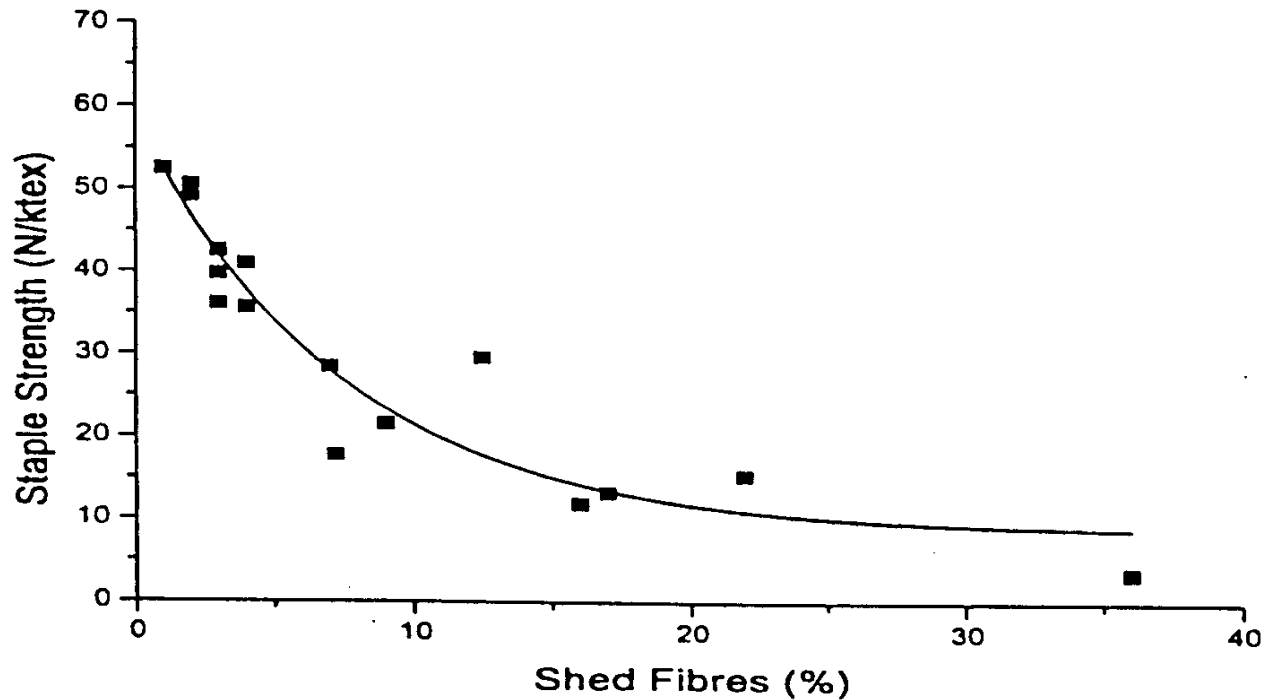
Tony Schlink

Source: Thompson and Schlink



Staple strength and fibre shedding

Fig. 3 Relationship between staple strength and fibre shedding at the point of break in non-supplemented pregnant/lactating Merino ewes. The equation of the line fitted to the data is $y = 8.5 + 50.3 \exp(-x/7.4)$ ($r^2=0.89$)



CRC

for

Premium

Quality

Wool