



CRC

for

Premium

Quality

Wool

# Medulla Structure

Produced for the CRC for Premium Quality Wool undergraduate program by;  
Dr. Janelle Hocking Edwards, The University of Western Australia.



# Medulla

- present in coarse fibres
- vacuolated cells
- uni- or multi-cellular in width
- discontinuous or continuous

CRC

for

Premium

Quality

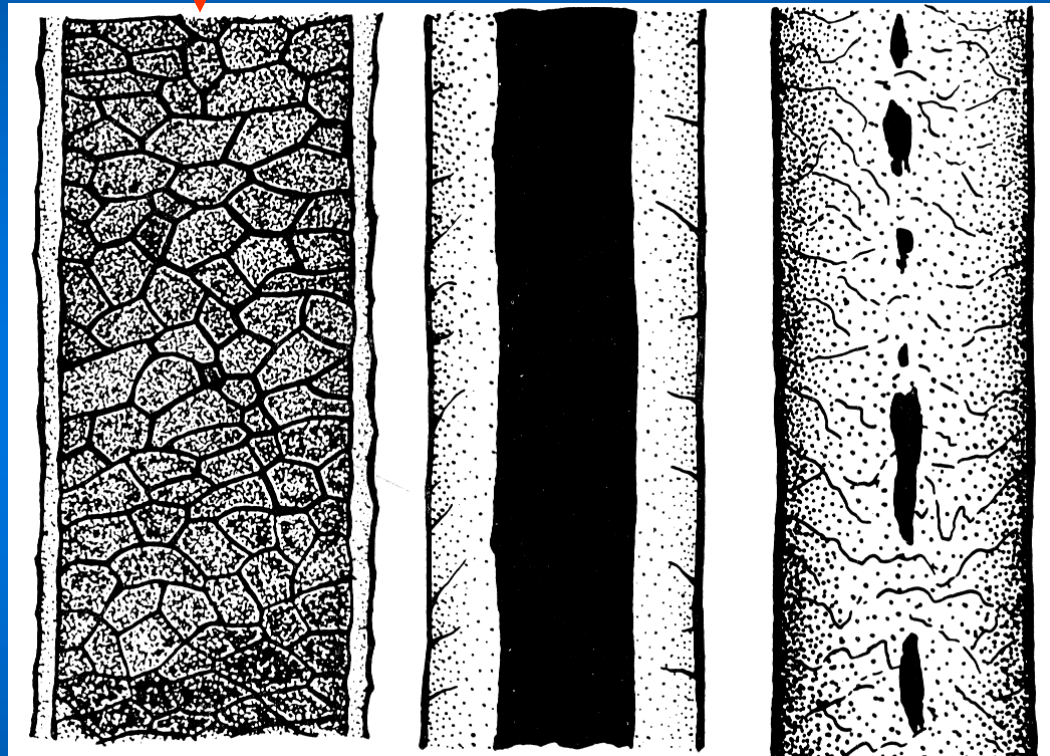
Wool



# Medulla patterns

Latticed medulla

Non-latticed medulla



Continuous

Fragmented

CRC  
for  
Premium  
Quality  
Wool

Janelle Hocking Edwards  
Source: Ryder, M.L., (1968)