



CRC

for

Premium

Quality

Wool

# Skin Structure

Produced for the CRC for Premium Quality Wool undergraduate program by;  
Dr. Janelle Hocking Edwards, The University of Western Australia.



# Sheep skin

- **Skin is composed of many different structures and cell types**
  - each has a specific function in relation to the whole animal
  - some components can directly influence wool production
- **Skin has a well developed nerve and blood supply**

CRC

for

Premium

Quality

Wool



# Skin structure

- **Skin is composed of two main layers**
  - **Epidermis**
    - outermost layer that separates the animal from the external environment
  - **Dermis**
    - consists of structures that support the epidermis and aids in protecting the animal from the external environment
    - includes nerves, blood vessels, follicles, glands

CRC

for

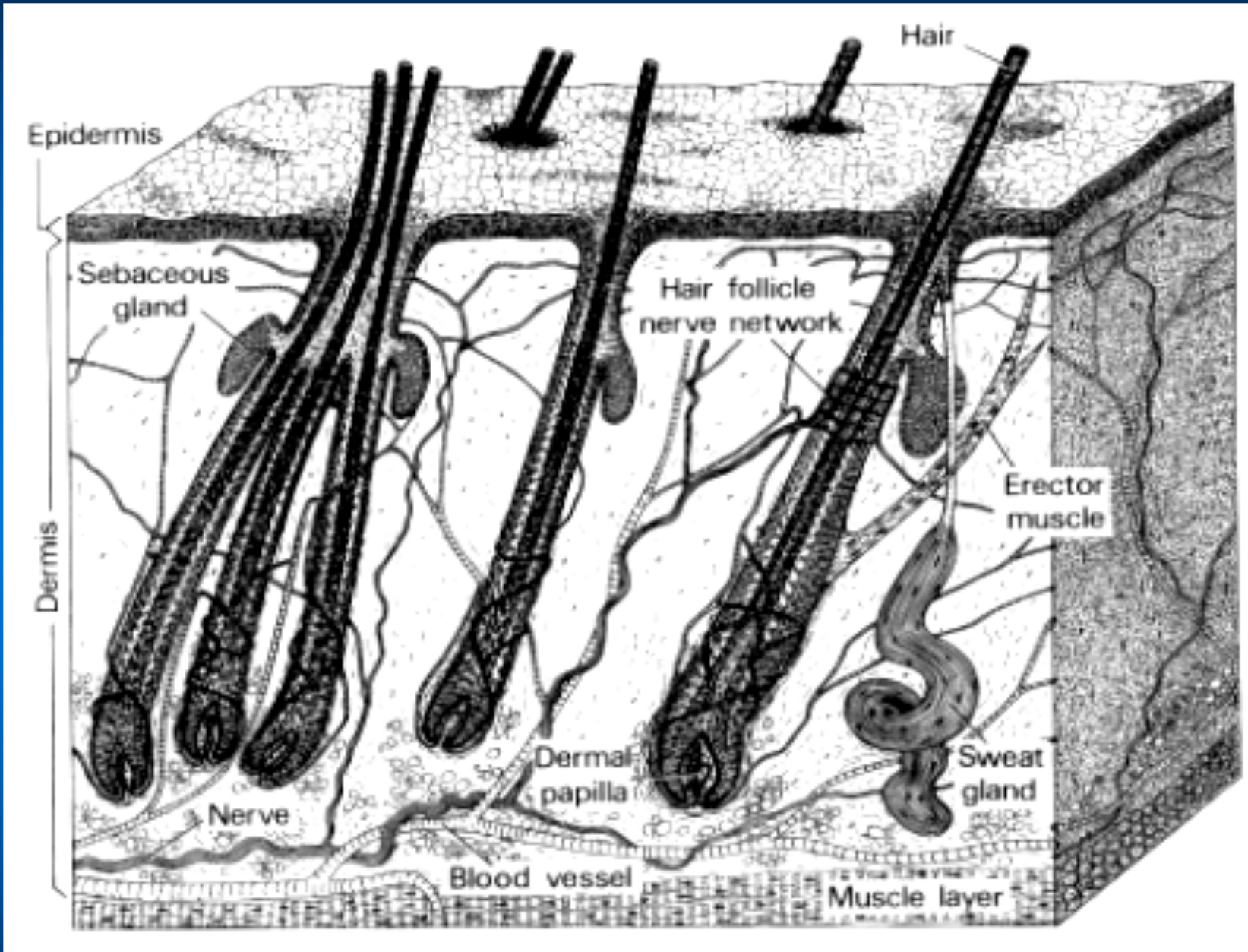
Premium

Quality

Wool

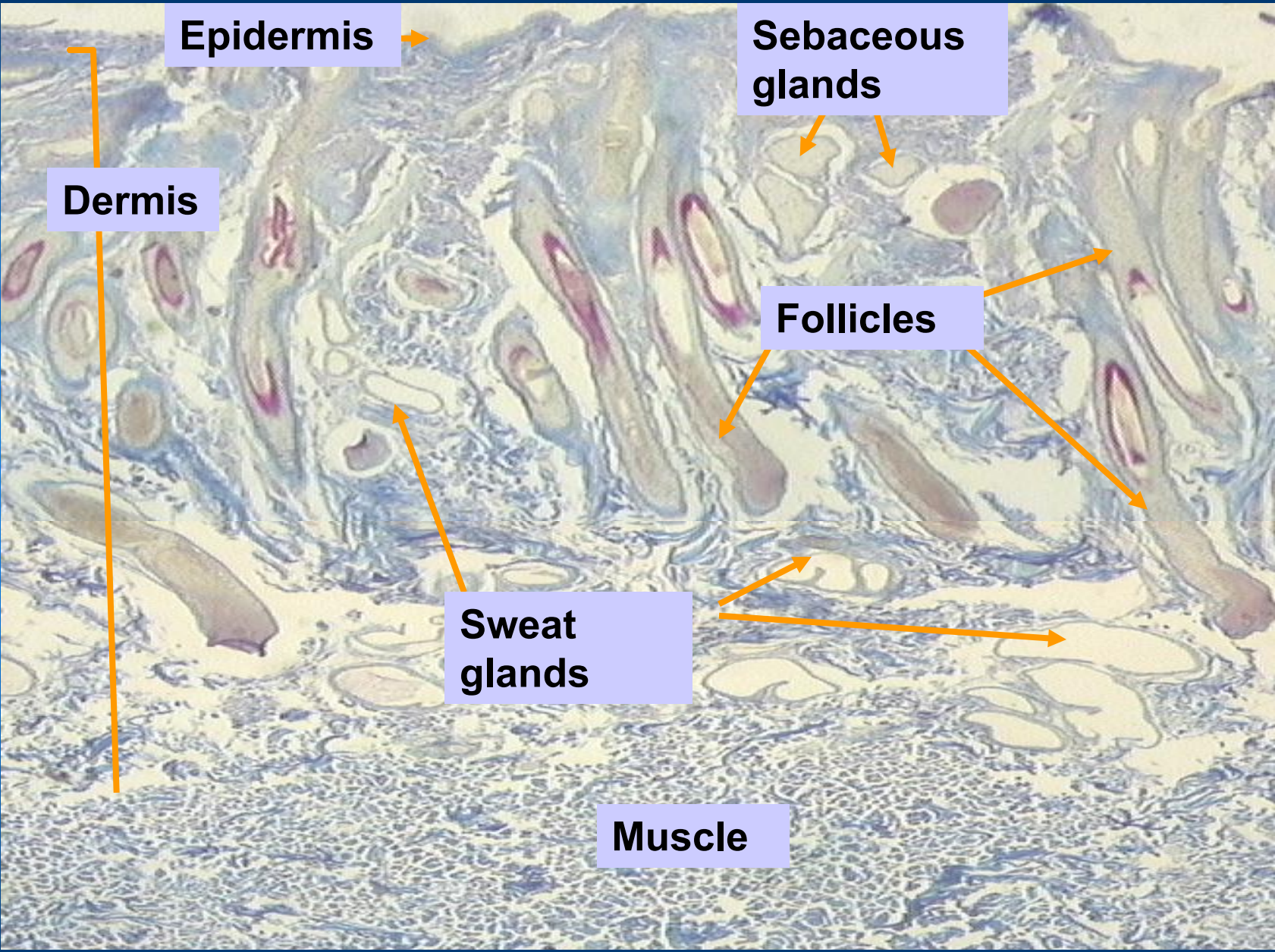


CRC  
for  
Premium  
Quality  
Wool



Janelle Hocking Edwards  
Source: Maddocks, I.J., & Jackson, N. (1988)





CRC  
for  
Premium  
Quality  
Wool

**Epidermis** →

**Sebaceous glands**

**Dermis**

**Follicles**

**Sweat glands**

**Muscle**