



CRC

for

Premium

Quality

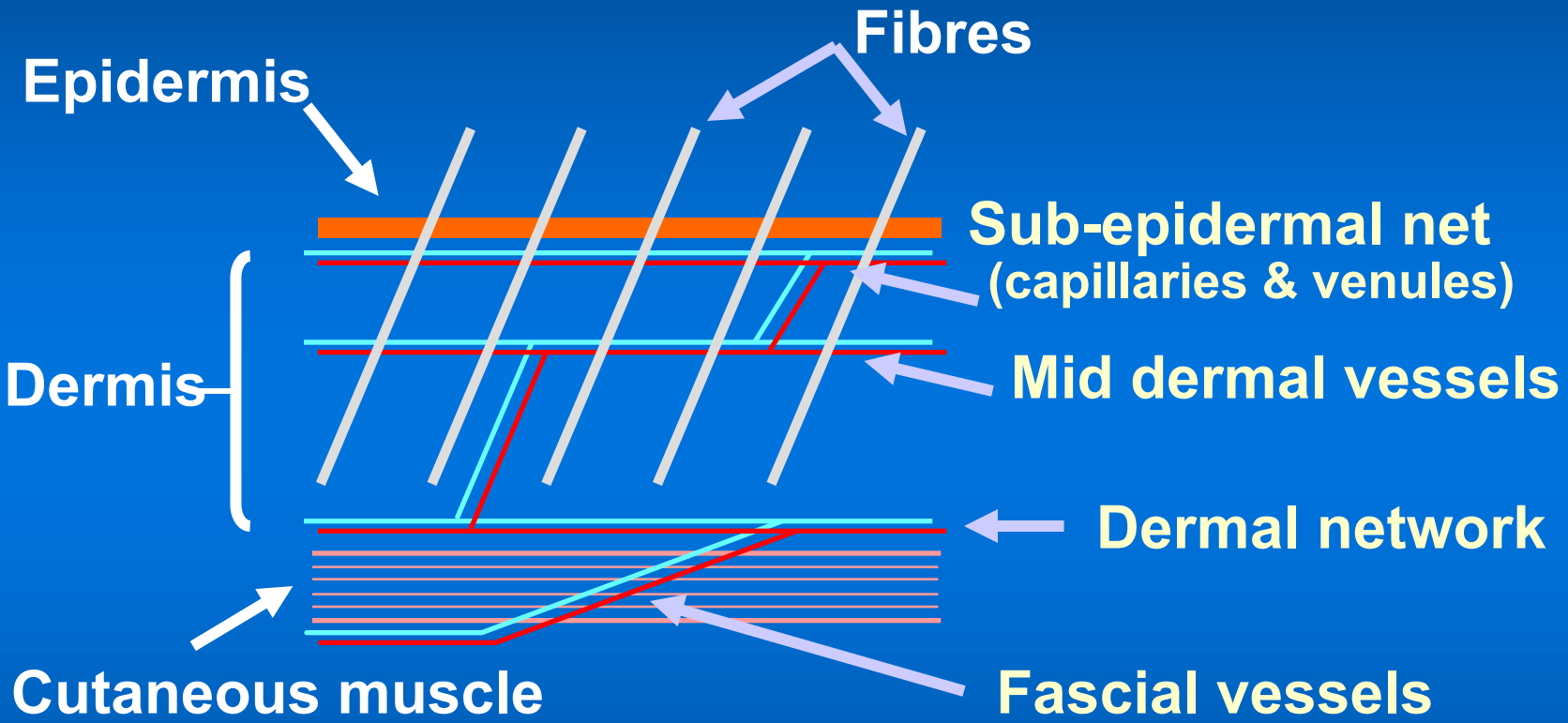
Wool

Dermal Accessory Structures

Produced for the CRC for Premium Quality Wool undergraduate program by;
Dr. Janelle Hocking Edwards, The University of Western Australia.



Vasculature of the skin



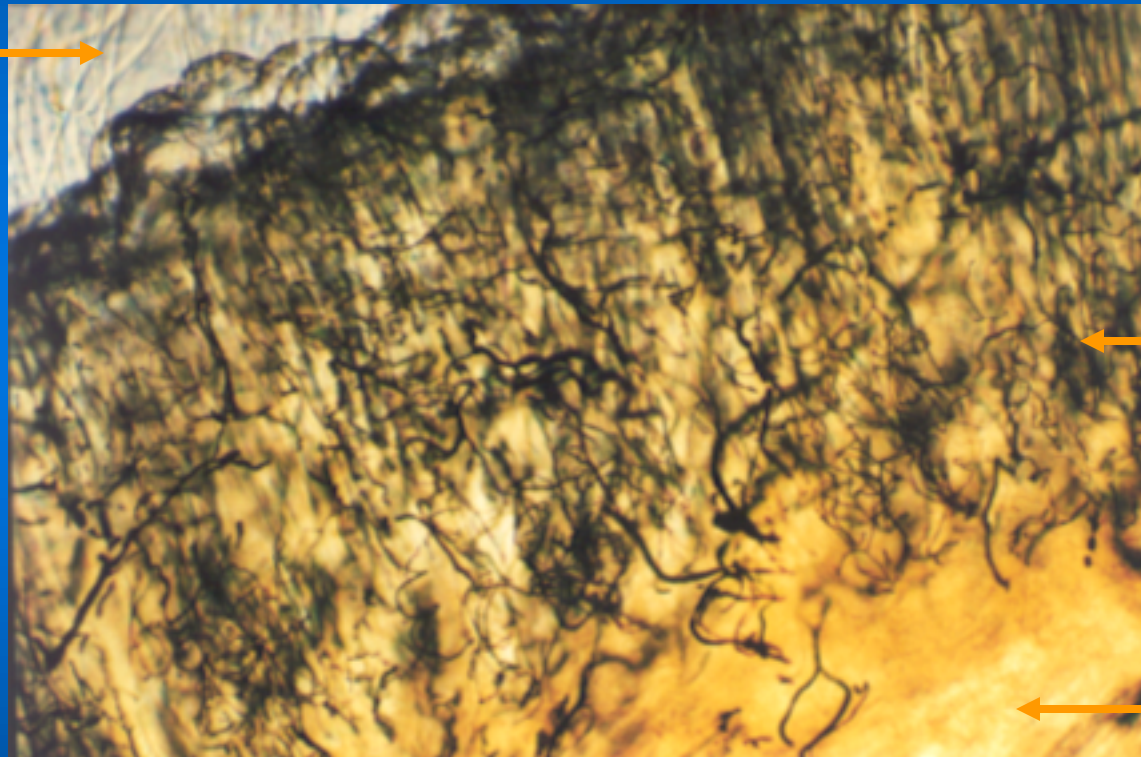
CRC
for
Premium
Quality
Wool



Blood vessels in sheep skin

Blood vessels are mainly distributed vertically through the skin around and between follicles

CRC
External
Wool Fibres



Blood
Vessels

Hypodermis

for

Premium

Quality

Wool



CRC

for

Premium

Quality

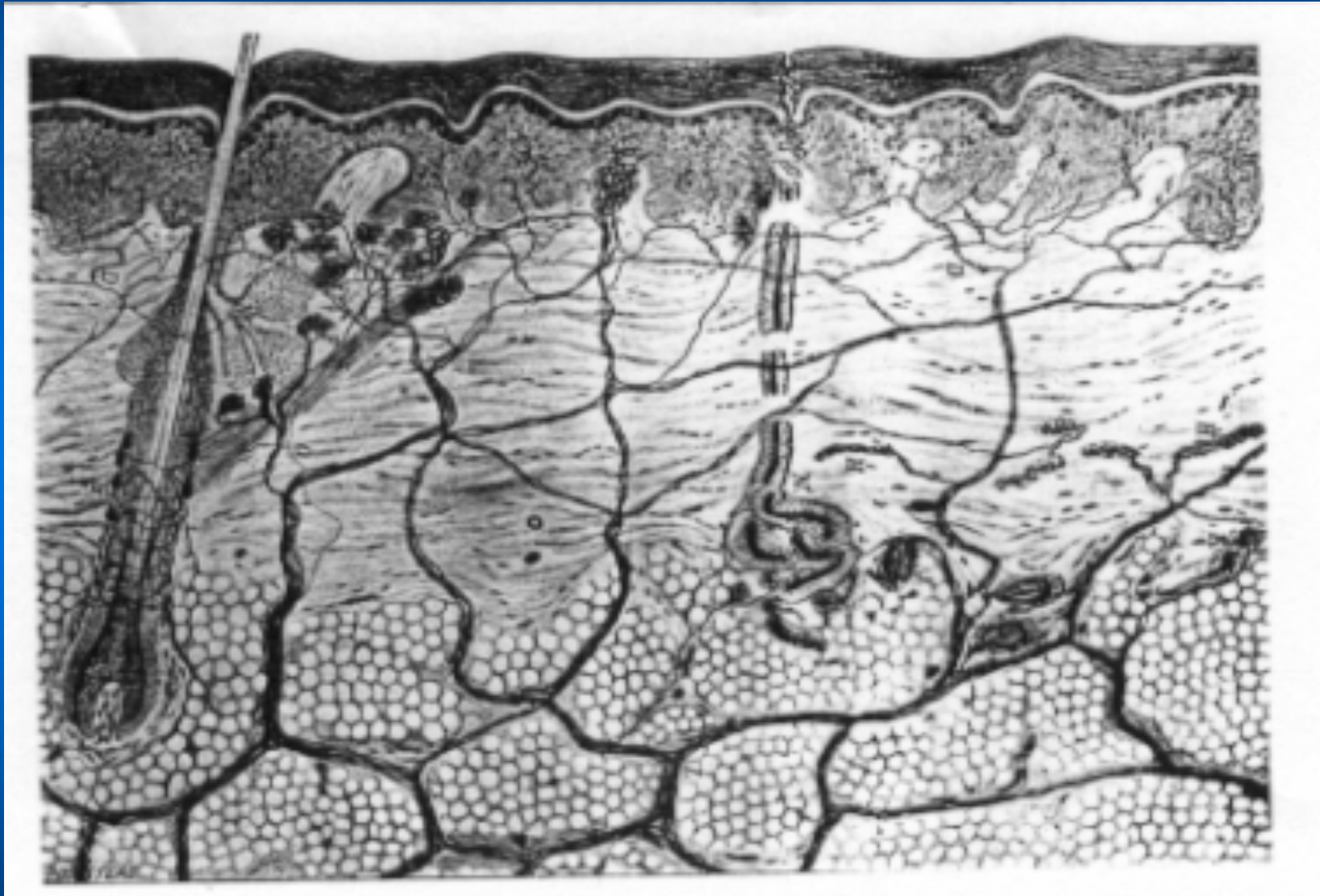
Wool

Innervation

- **Sensory nerves**
 - specialised receptors
 - at epidermal-dermal junction
 - around hair
 - Schwann cell-axonal units
- **Motor nerves**
 - follow blood vessels
 - vasomotor control
 - pilomotor function
 - sweat secretion



Nerves of the skin



CRC

for

Premium

Quality

Wool