



CRC

for

Premium

Quality

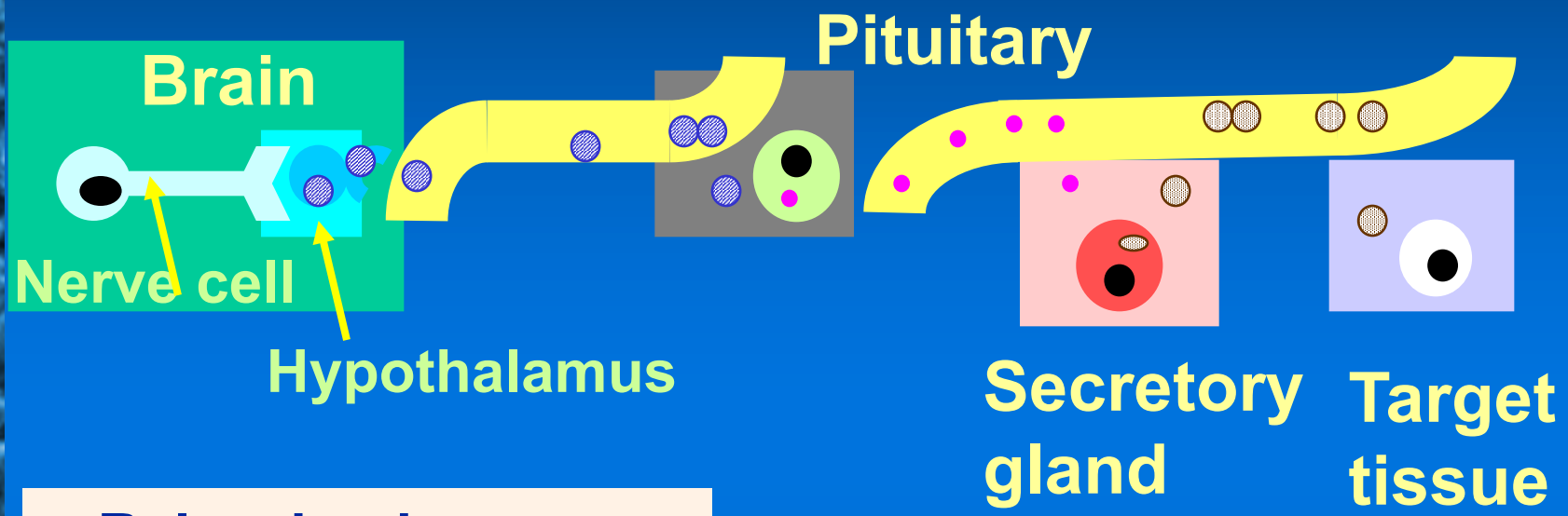
Wool

# The Effect of the Pituitary on Wool Production

Produced for the CRC for Premium Quality Wool undergraduate program by;  
Dr. Peter Wynn, The University of Sydney.



# Pituitary Hormones



- Releasing hormone
- Stimulating hormone
- Hormone

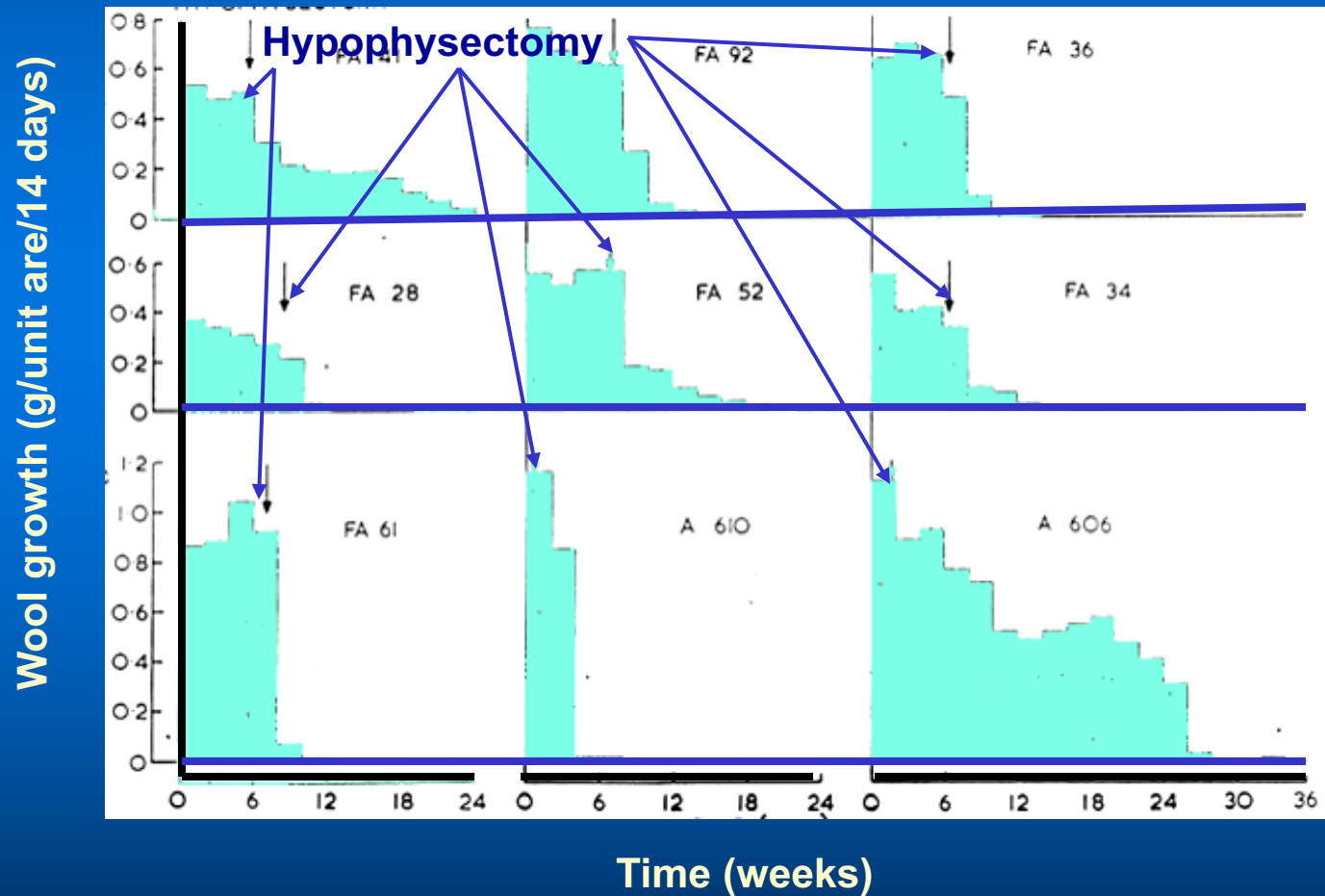
**TSH, ACTH, GH  
Prolactin  
Gonadotrophins  
Oxytocin, vasopressin**

CRC  
for  
Premium  
Quality  
Wool



# The effect of hypophysectomy (removal of pituitary) on wool growth of 9 Sheep

- wool growth declines slowly over 4 to 26 weeks
  - follicles enter telogen



CRC  
for  
Premium  
Quality  
Wool