



CRC

for

Premium

Quality

Wool

Estimating Cell Division Rates by Manipulating the Cell Cycle With Colchicine

Produced for the CRC for Premium Quality Wool undergraduate program by;
Dr. Janelle Hocking Edwards, The University of Western Australia.



Arresting cell division

- **Stathmokinetic: to stop cell division**
- **Compounds used**
 - colchicine, colcemid and vineblastine
- **Method**
 - drug administration
 - skin sampling
 - counting cells in metaphase
 - results
 - number of cells dividing / time

CRC

for

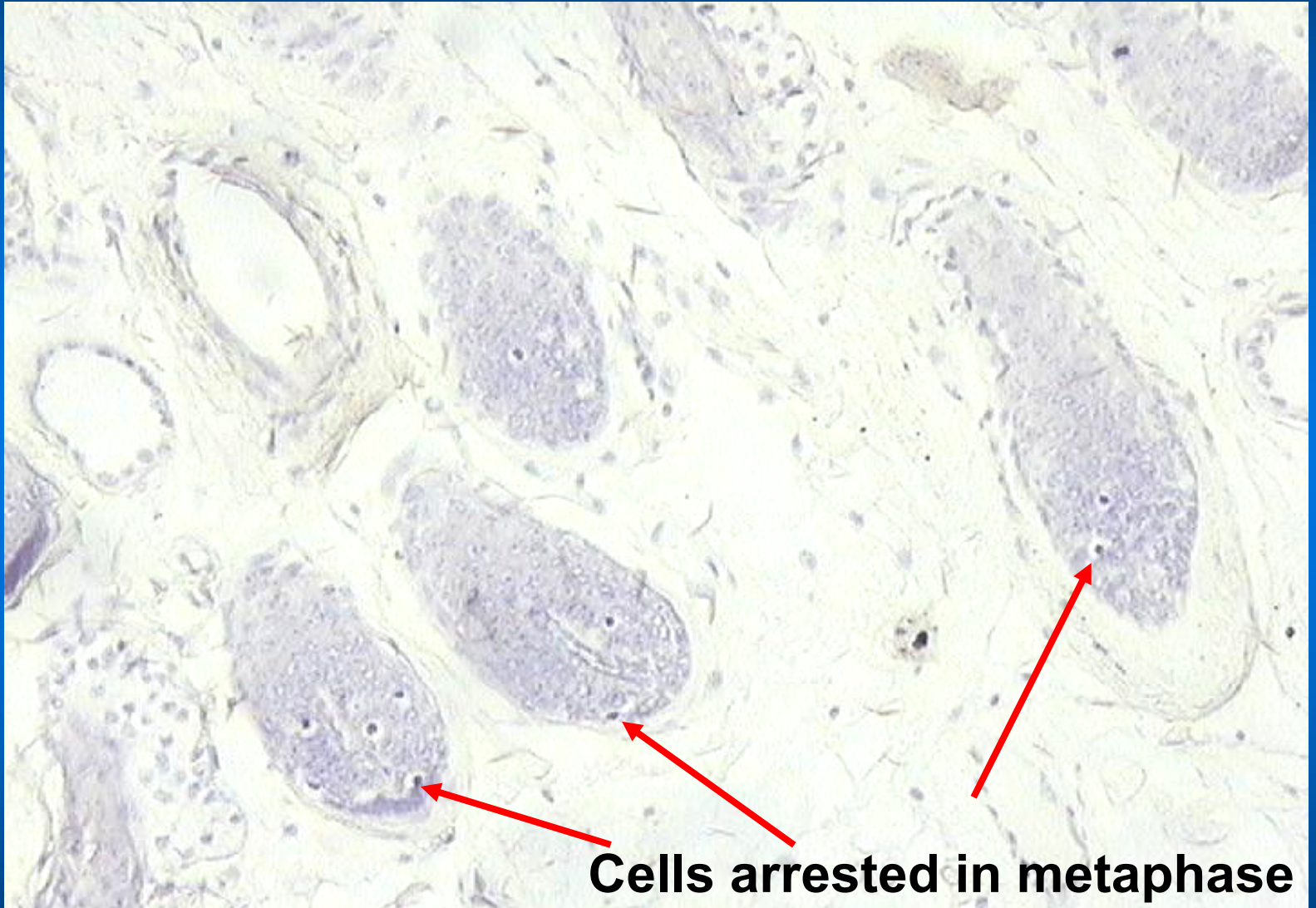
Premium

Quality

Wool



Cell division rate



CRC

for

Premium

Quality

Wool