



CRC

for

Premium

Quality

Wool

Two Dimensional Gel Electrophoresis

Produced for the CRC for Premium Quality Wool undergraduate program by;
Dr Janelle Hocking Edwards, The University of Western Australia.

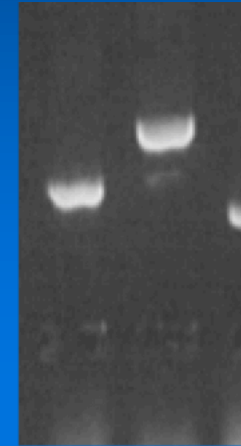


Gel electrophoresis - First dimension

Largest

DNA Separation

Smallest



← 10.0 kb

← 2.0kb

← 1.0kb

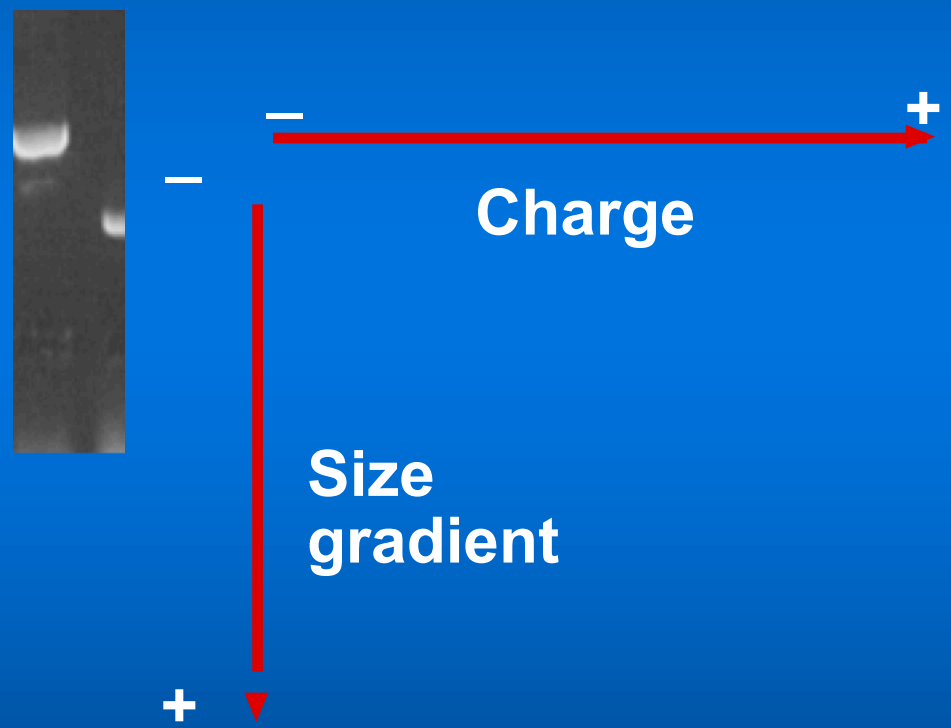
← 0.5 kb

CRC
for
Premium
Quality
Wool



Gel electrophoresis - Second dimension

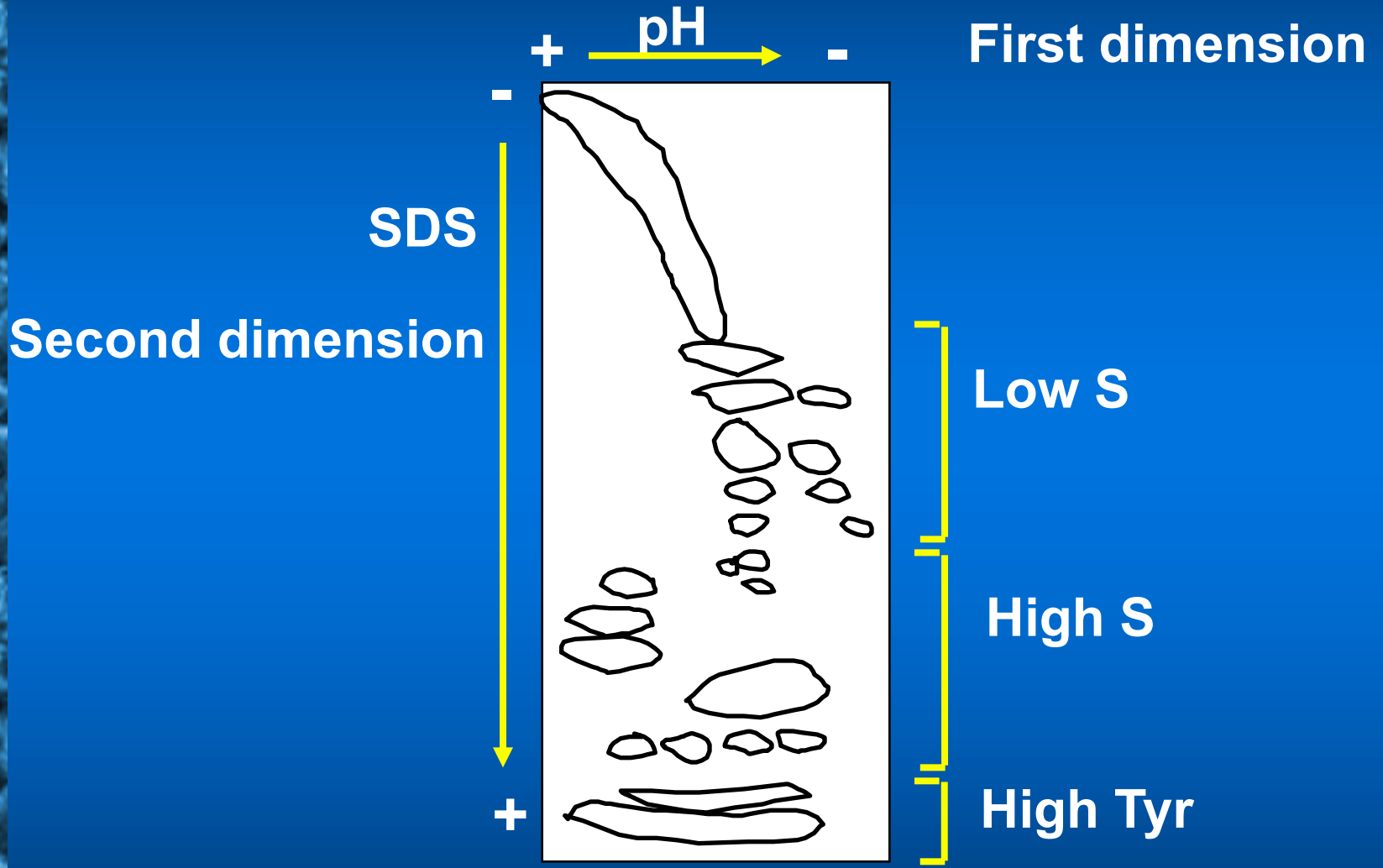
- 2 dimensional gel electrophoresis



CRC
for
Premium
Quality
Wool



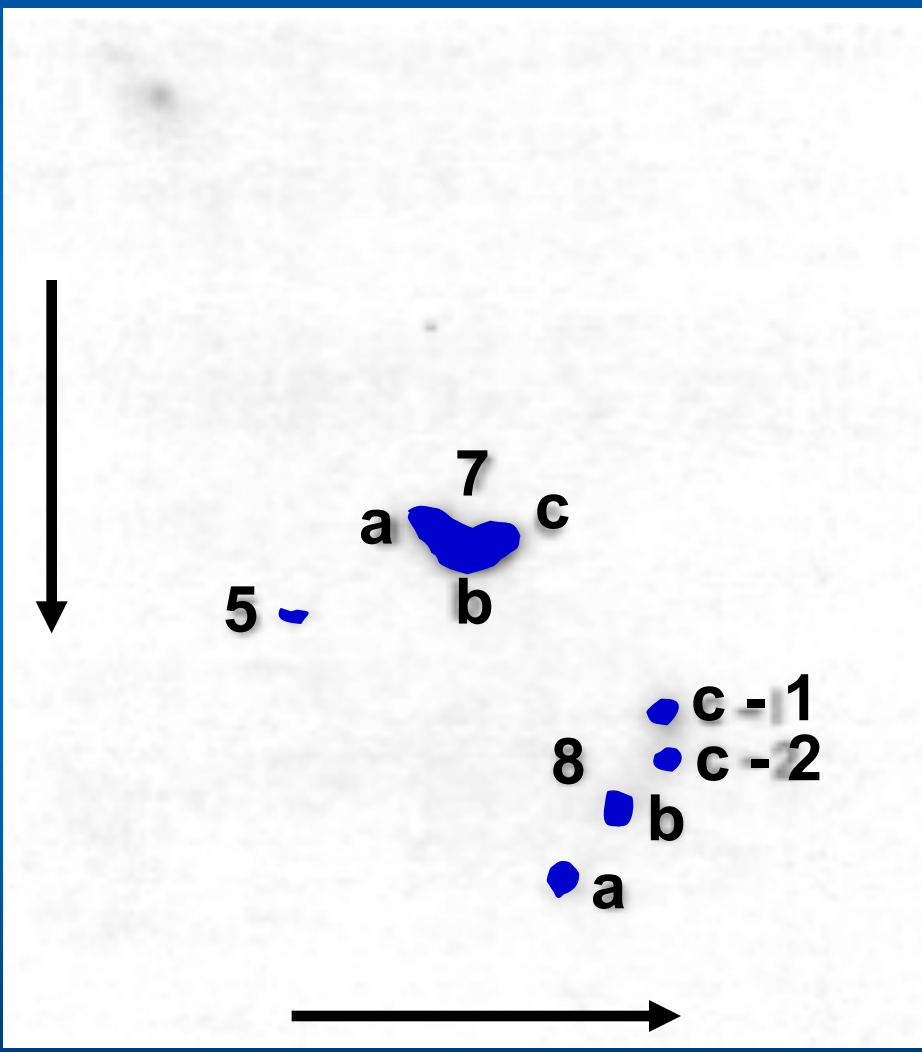
Idealised diagram of 2D gel (Western)



CRC
for
Premium
Quality
Wool



Low S wool proteins prepared at neutral pH



- First dimension (horizontal)
 - PAGE in 8M urea at pH 8.9
- Second dimension (vertical)
 - PAGE in SDS at pH 7.5

CRC
for
Premium
Quality
Wool