



CRC

for

Premium

Quality

Wool

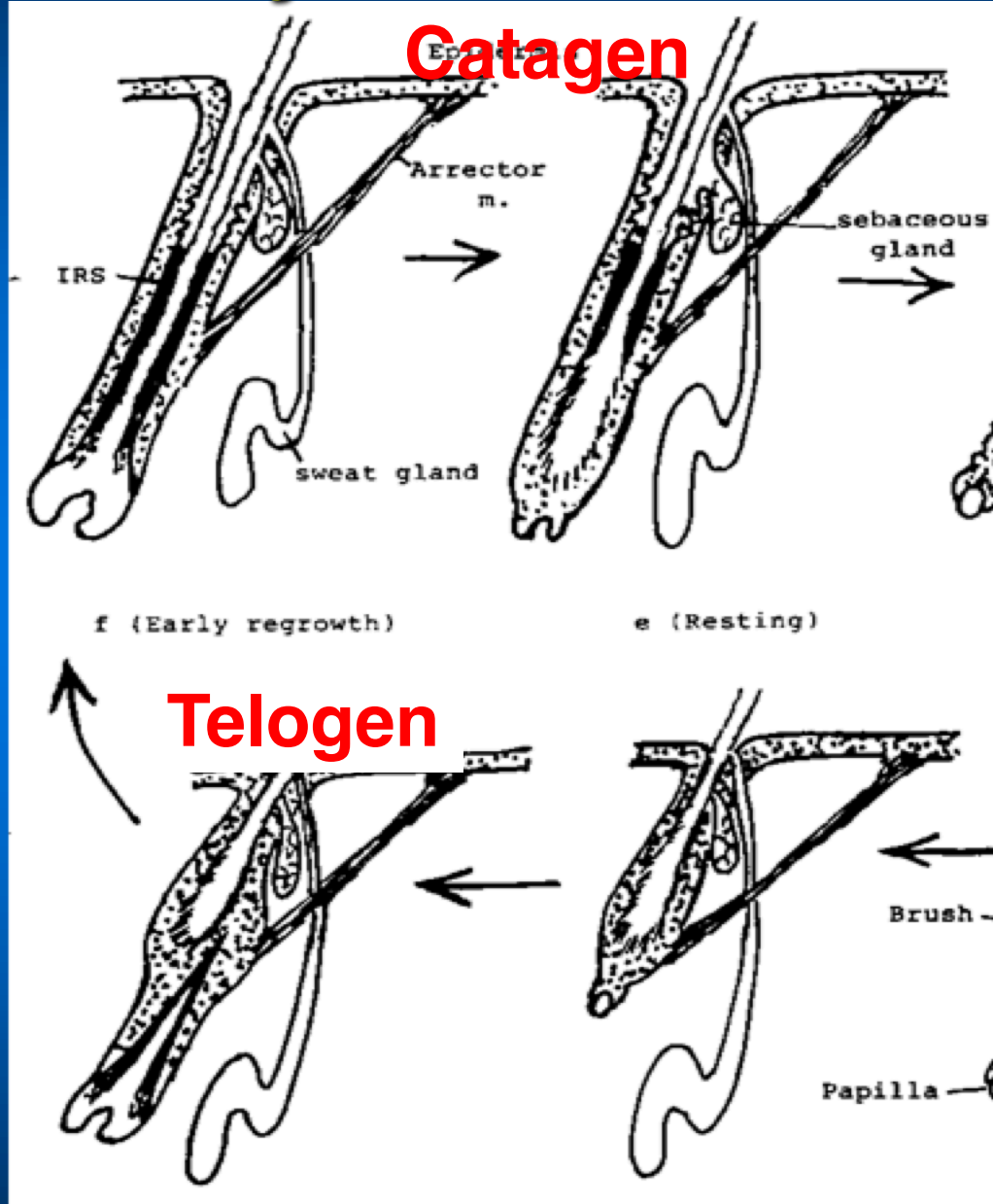
Follicle Cycle

**Produced for the CRC for Premium Quality Wool undergraduate program by;
Dr. Janelle Hocking Edwards, The University of Western Australia,
Dr. Tony Schlink, CSIRO Animal Production, and
Dr. Peter Wynn, The University of Sydney.**



Follicle cycle

Anagen



CRC

for

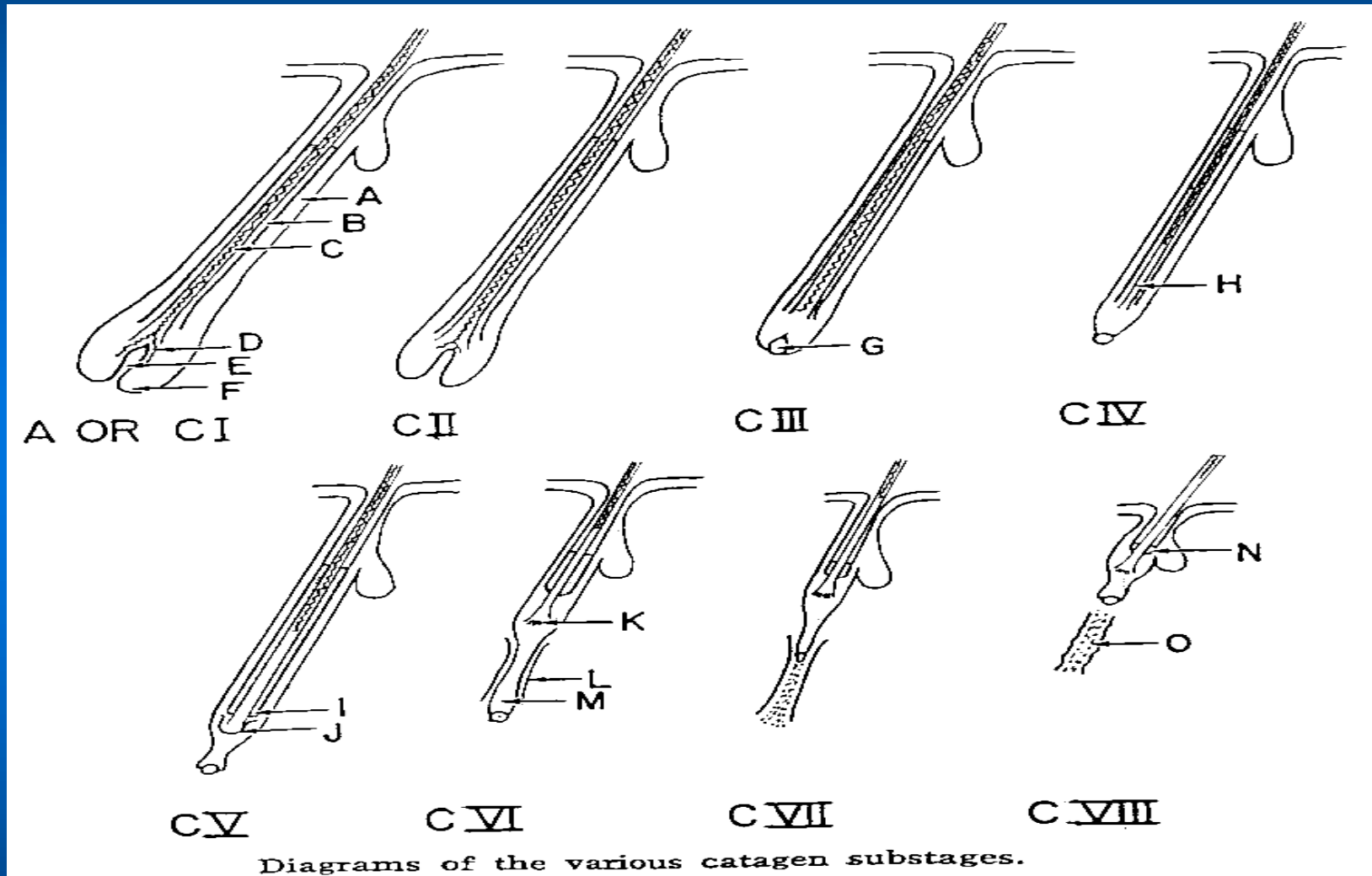
Premium

Quality

Wool



Various catagen stages



CRC

for

Premium

Quality

Wool

Follicle stages

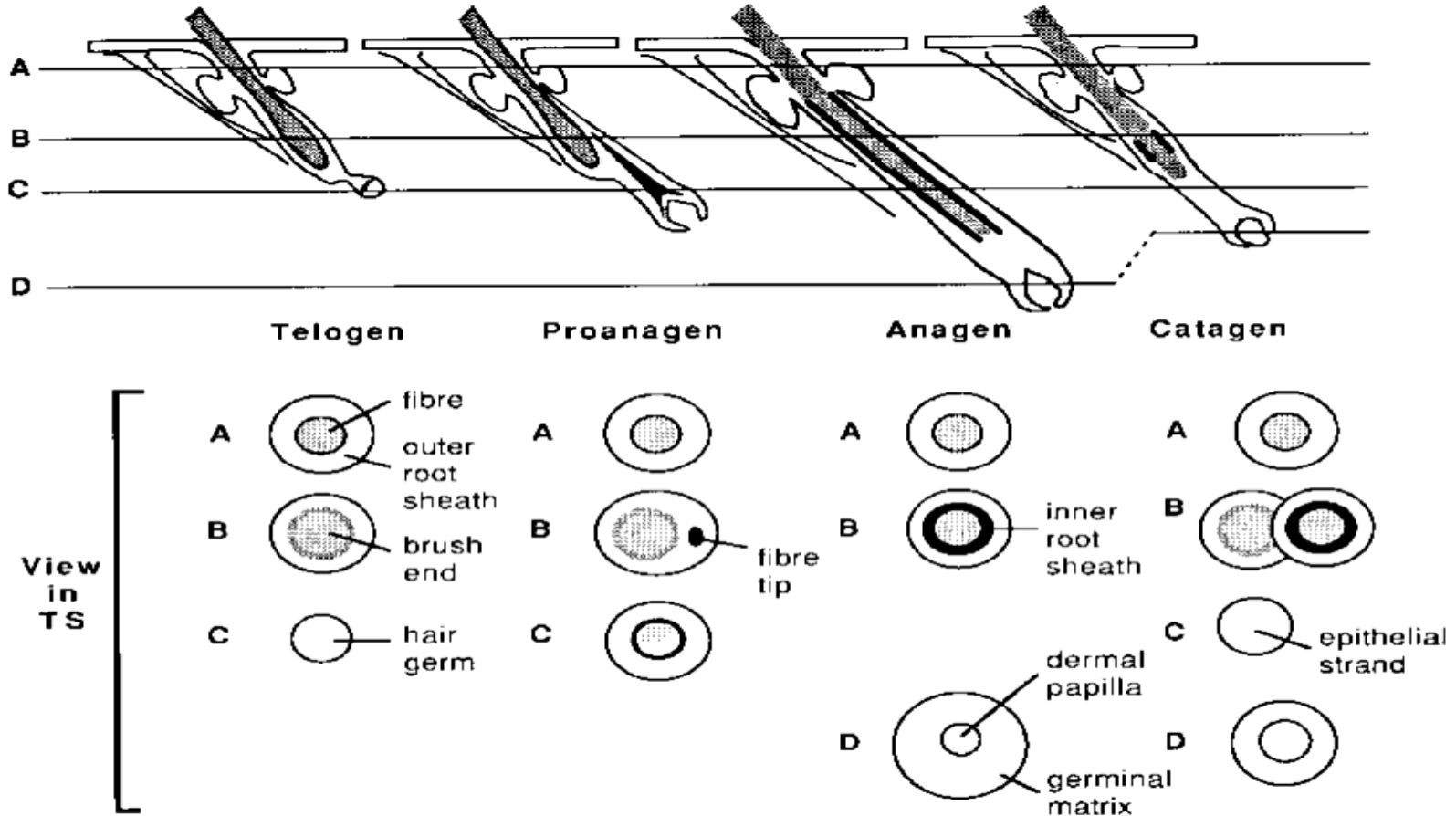


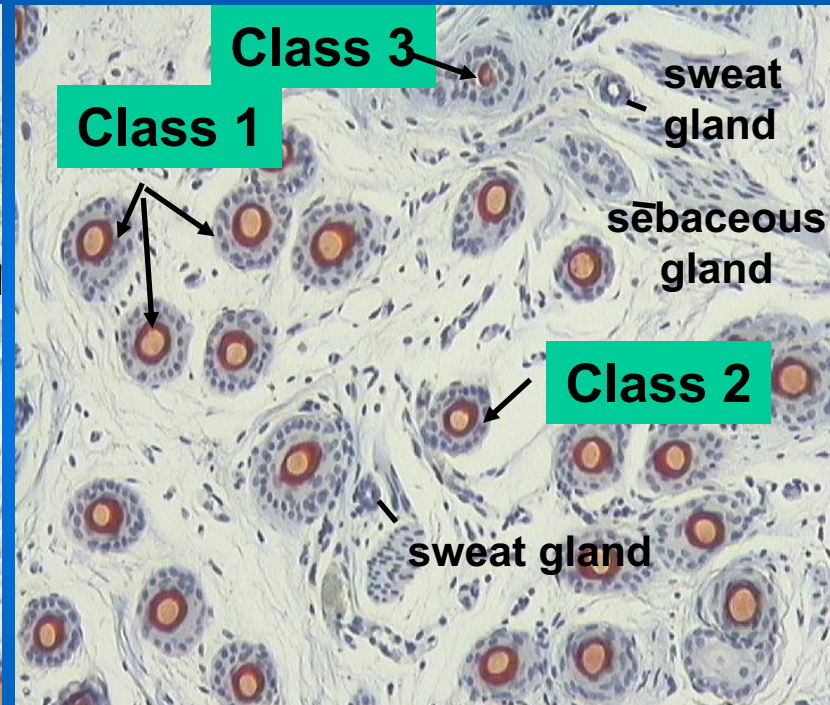
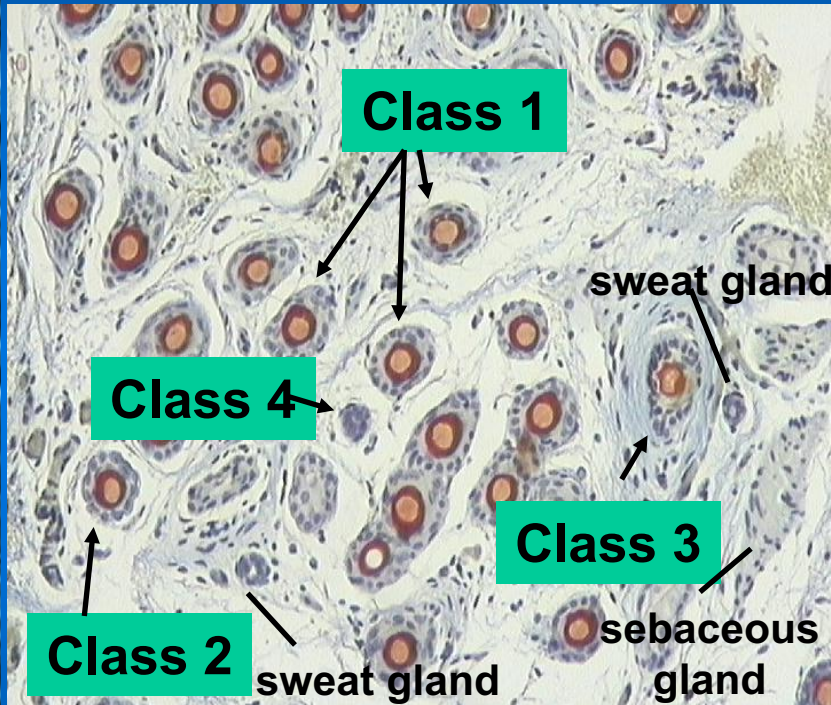
Fig. 4. Relationship between hair cycle stage and view of follicles in transverse section. Generalized structure of follicles at the four main stages of the hair cycle are shown as they appear in longitudinal section. Diagrams of the structures seen in cross section through each follicle at planes A to D are shown below (cf. Figs. 1-3). Telogen follicles are considered quiescent. Anagen, proanagen, and early catagen phases are active.

CRC
for
Premium
Quality
Wool



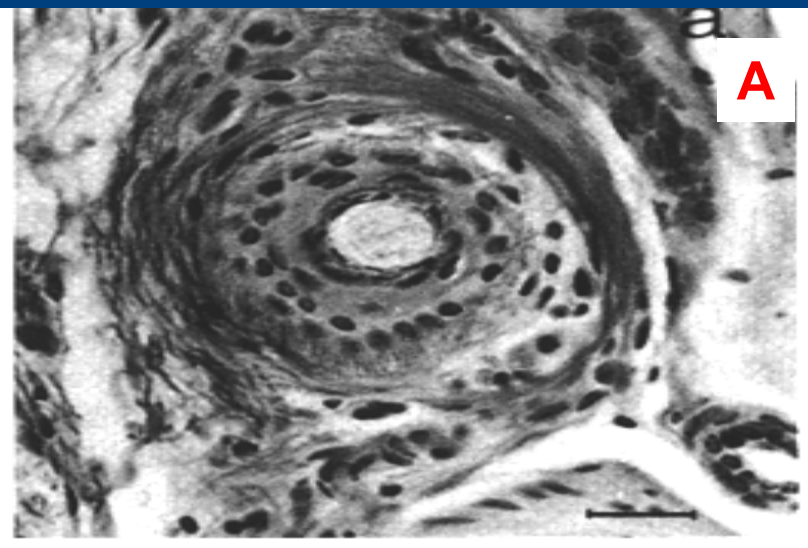
Classification of follicle types in sheep transverse section

CRC
for
Premium
Quality
Wool

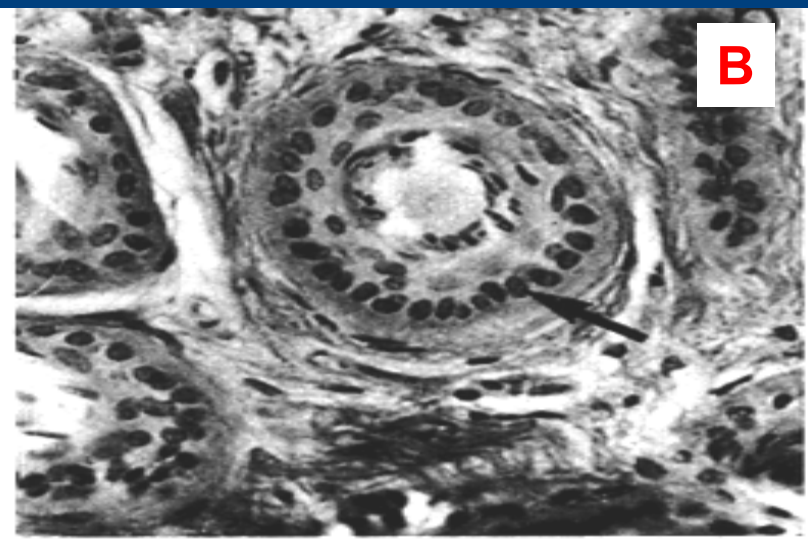




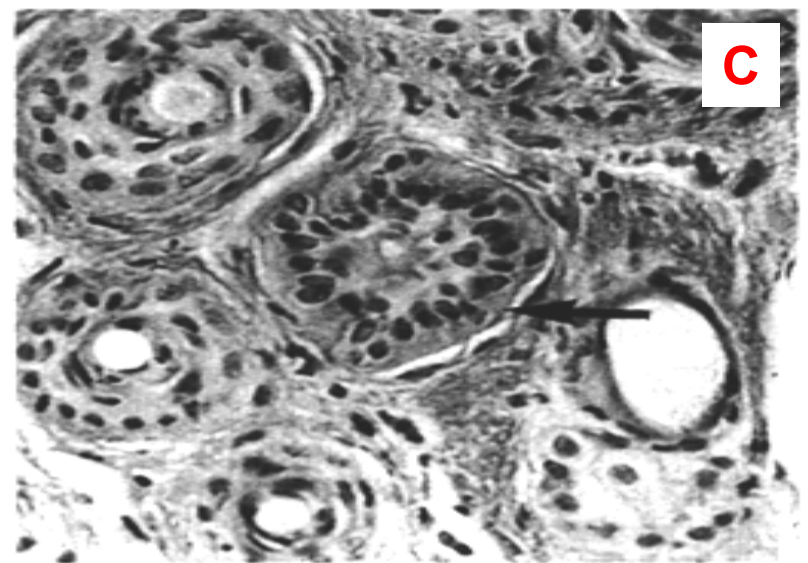
CRC
for
Premium
Quality
Wool



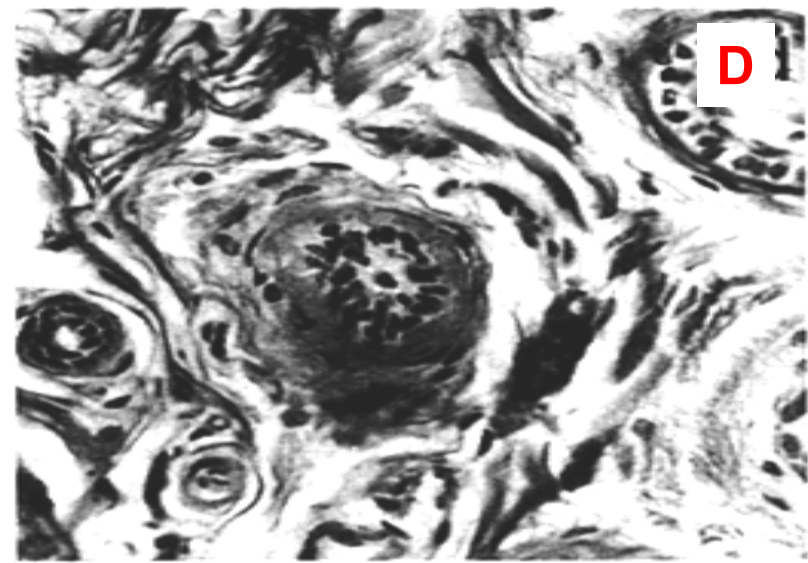
A



B



C

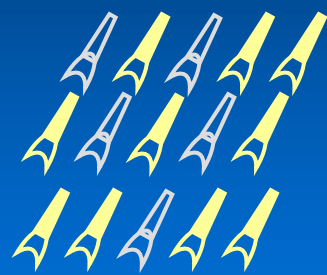
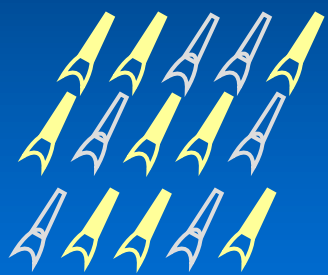
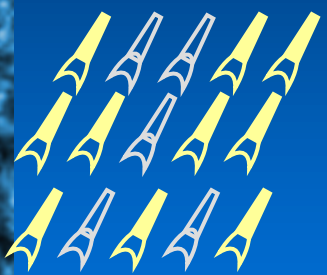


D

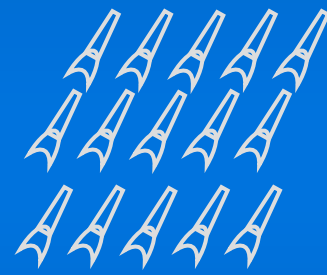
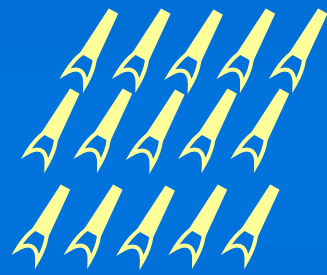
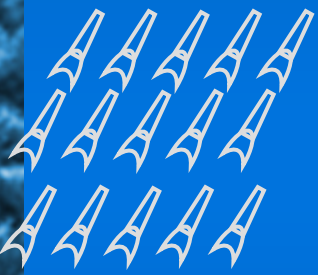


Moultin9 Patterns

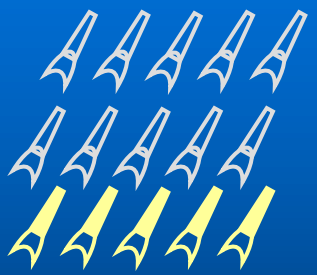
CRC
for
Premium
Quality
Wool



Mosaic
Merino, Human



Synchronous
Wiltshire, Cat



Wave
Mouse, Rat