



CRC

for

Premium

Quality

Wool

Fleece Shedding in Sheep

Produced for the CRC for Premium Quality Wool undergraduate program by;
Dr. Tony Schlink, CSIRO, Animal Production.



Primitive Sheep

- Why worry about shedding as Merinos don't shed do they?
- However, Merino's are a descendent of the more primitive sheep types
- So some of the characteristics of the primitive sheep maybe still part of the make up of Merino sheep

CRC

for

Premium

Quality

Wool



Sequence of Casting

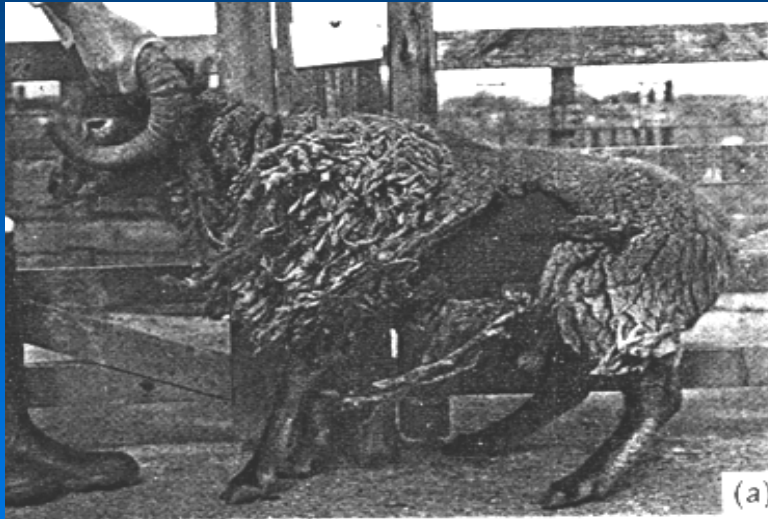
CRC

for

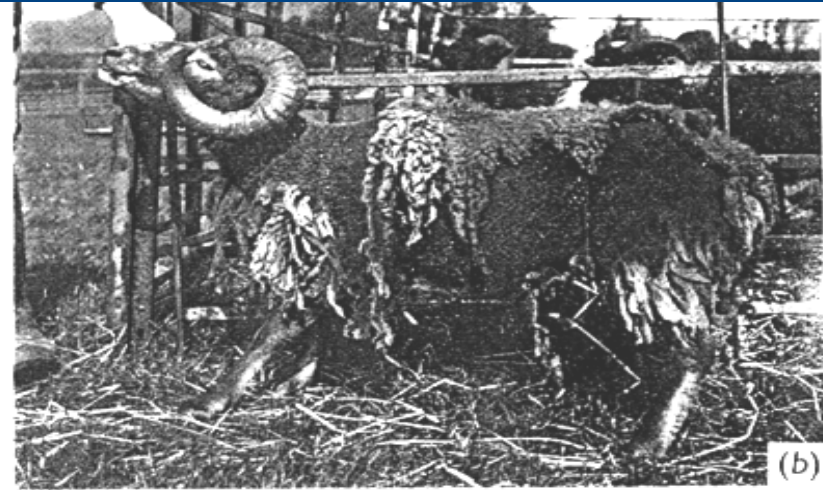
Premium

Quality

Wool



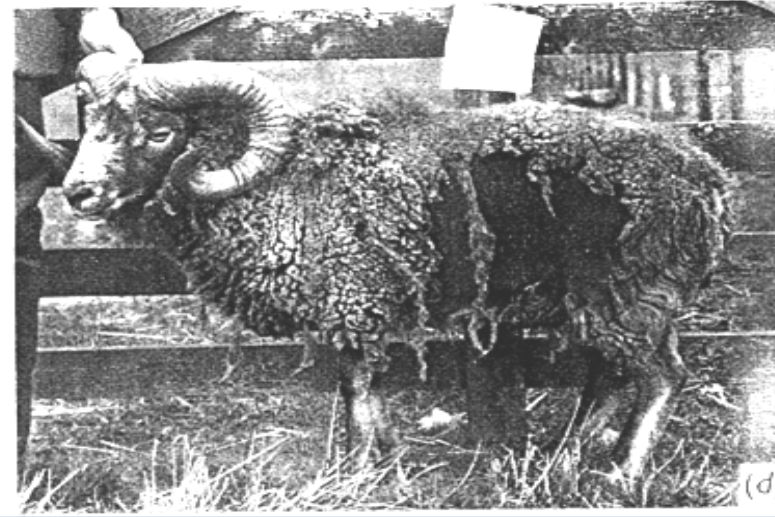
(a)



(b)



(c)



(d)



Changes in Follicle Activity

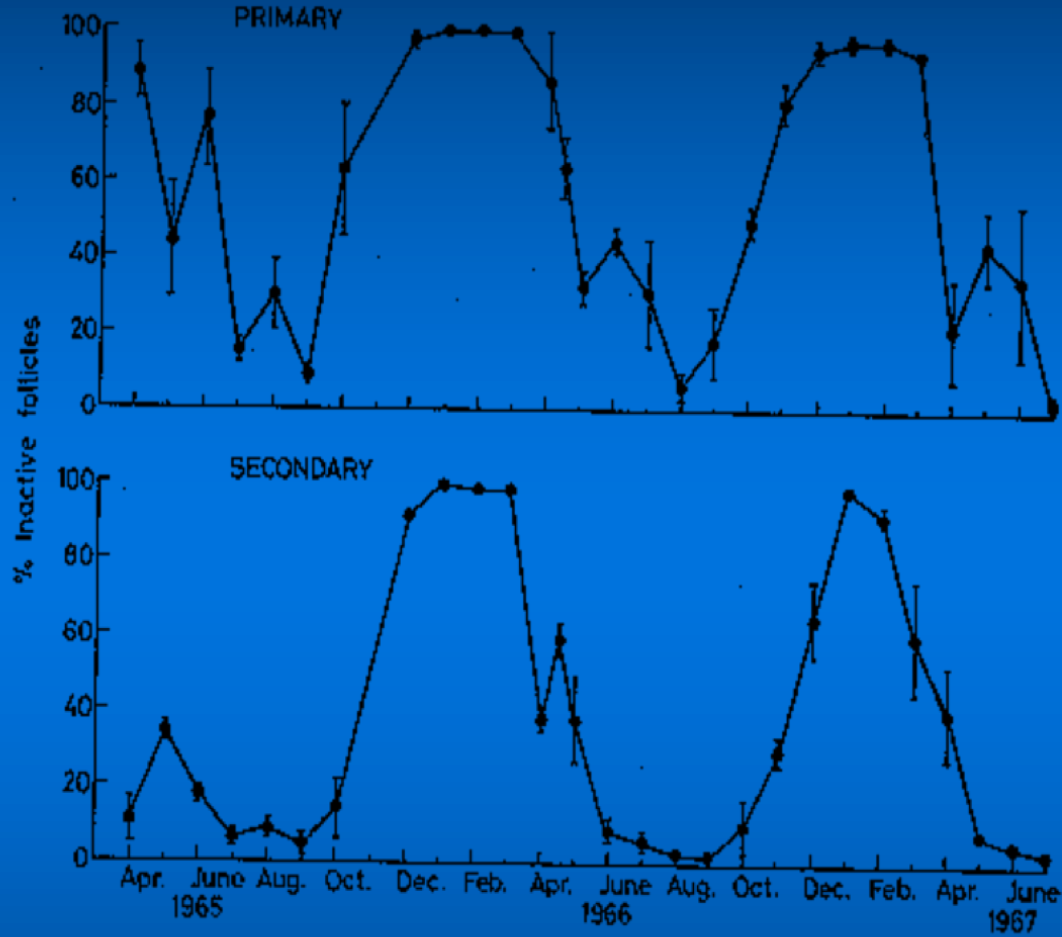


Fig. 1. Changes in follicle activity in adult Wiltshire Horn sheep in the northern hemisphere. The vertical lines represent one standard error of the mean. Adapted from Ryder (1969).

Tony Schlink
Source: Ryder, ML (1971)

CRC

for

Premium

Quality

Wool