



CRC

for

Premium

Quality

Wool

Follicle Initiation and Thyroid Hormones

Produced for the CRC for Premium Quality Wool undergraduate program by;
Dr. Janelle Hocking Edwards, The University of Western Australia.



Effect of thyroid hormones on follicle initiation and development

- **Fetal thyroidectomy**
 - effect on P follicles
 - failure of keratinisation
 - excessive branching
 - excessive sweat gland development and branching
 - no S follicles or sebaceous gland formation.
- thyroid plays a role in the stimulation and regulation of follicle differentiation.

CRC

for

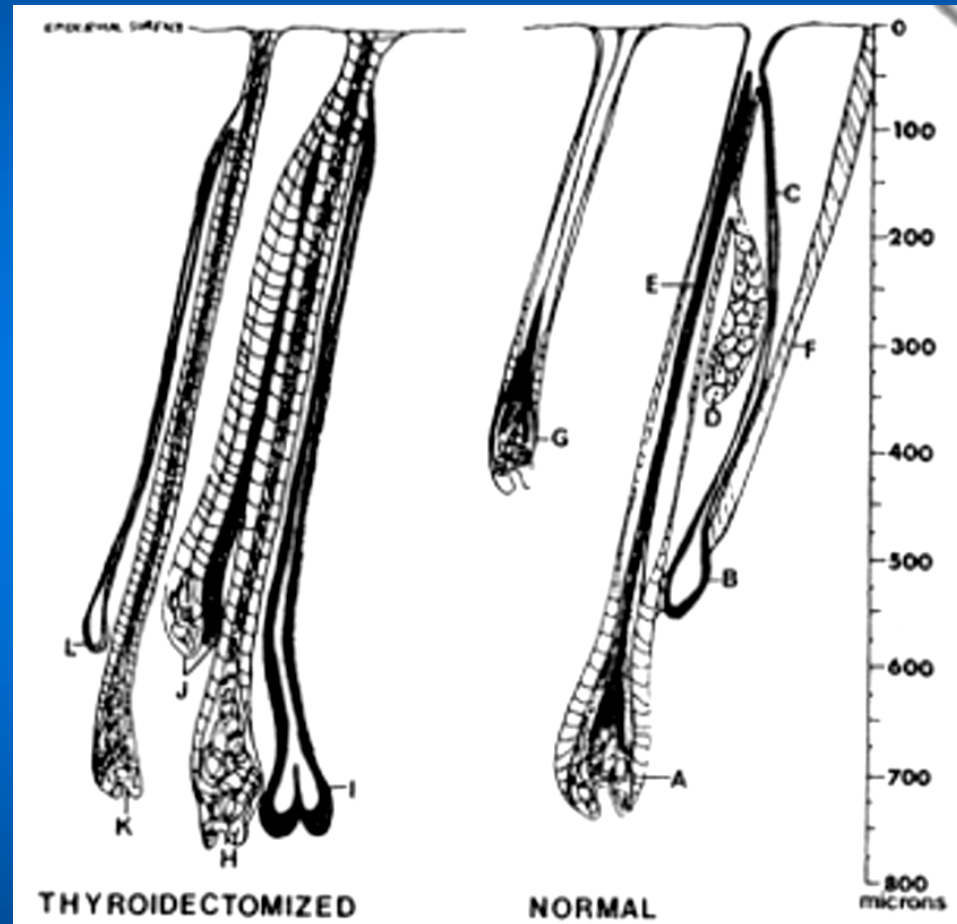
Premium

Quality

Wool



Wool follicles from a thyroidectomised and a normal fetal lamb at 118 days of gestation



CRC

for

Premium

Quality

Wool

Janelle Hocking Edwards
Source: Wallace *et al.* (1994)