



CRC

for

Premium

Quality

Wool

The Dermis

Produced for the CRC for Premium Quality Wool undergraduate program by;
Dr. Janelle Hocking Edwards, The University of Western Australia.



Dermis structure

- underlying support of the skin
- dense framework
- supports and nourishes epidermis
- provides elasticity and strength
- **Connective tissue (loose)**
 - undifferentiated
 - fibres and cells embedded in substratum
 - semifluid gelatinous substratum
- **Hypodermis**

CRC

for

Premium

Quality

Wool



Components of the dermis

- **fibrous proteins**
 - collagen, elastin, reticulin
 - Extra-Cellular Matrix (ECM)
- **ground substance**
- **cells**
 - fibroblasts, mast cells, lymphocytes
melanocytes, macrophages.
- **supporting structures**
 - blood vessels, nerves, lymph

CRC

for

Premium

Quality

Wool



Dermis function

- protects from external injury
- interacts with epidermis
- barrier to infection
- water-binding (maintains turgidity)
- ion exchange

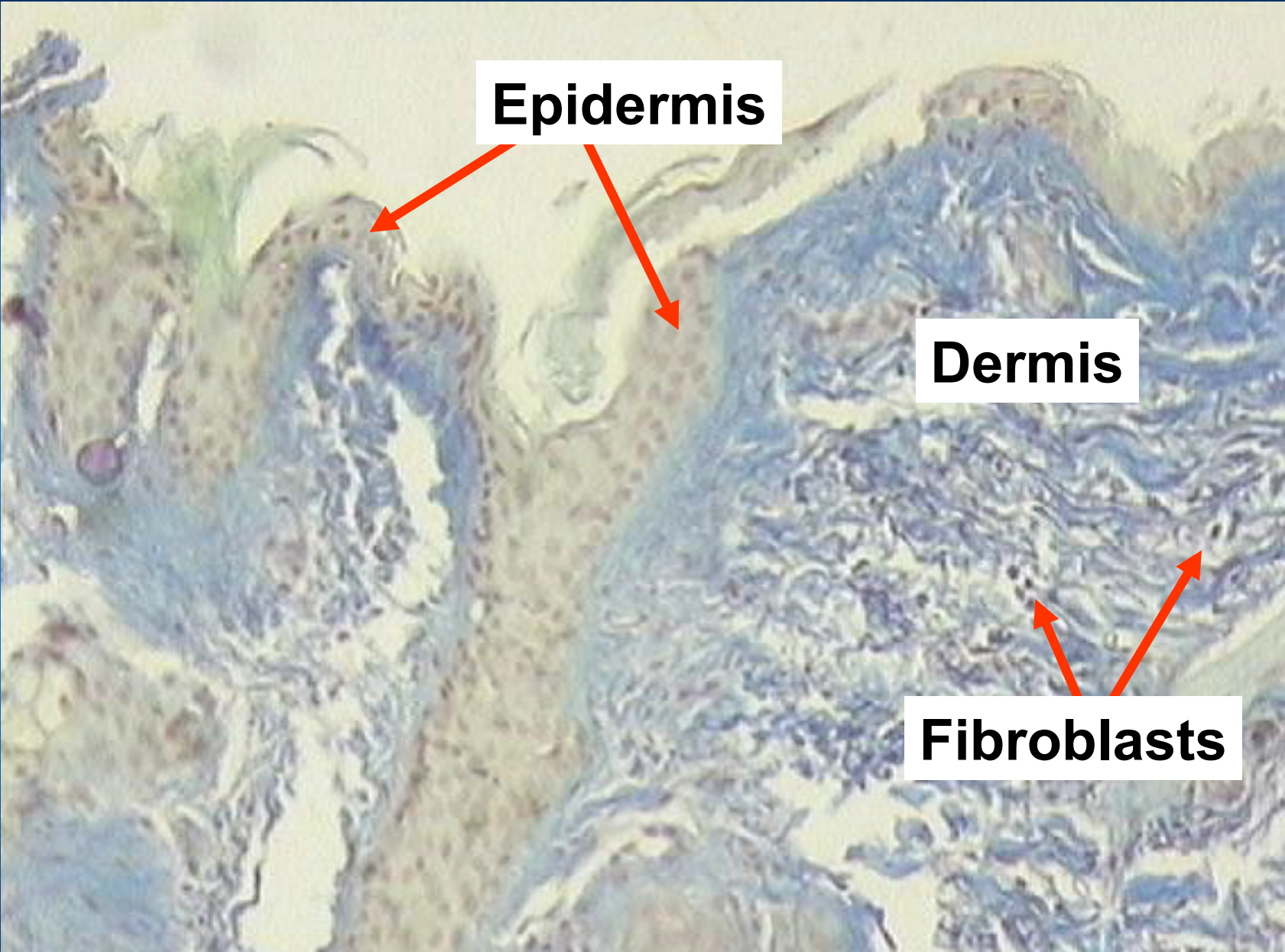
CRC

for

Premium

Quality

Wool



Epidermis

Dermis

Fibroblasts

CRC
for
Premium
Quality
Wool