



CRC

for

Premium

Quality

Wool

The Effect of Insulin-like Growth Factor on Wool Production

Produced for the CRC for Premium Quality Wool undergraduate program by;
Dr. Peter Wynn, The University of Sydney, and
Dr. Janelle Hocking Edwards, The University of Western Australia.



Insulin-like growth factor 1 (IGF1)

- IGF1 mediates the action of GH
 - endocrine and paracrine/autocrine actions
 - can improve protein metabolism when the animal is in a catabolic state
 - rarely affects wool production
 - has little effect on skin metabolism

CRC

for

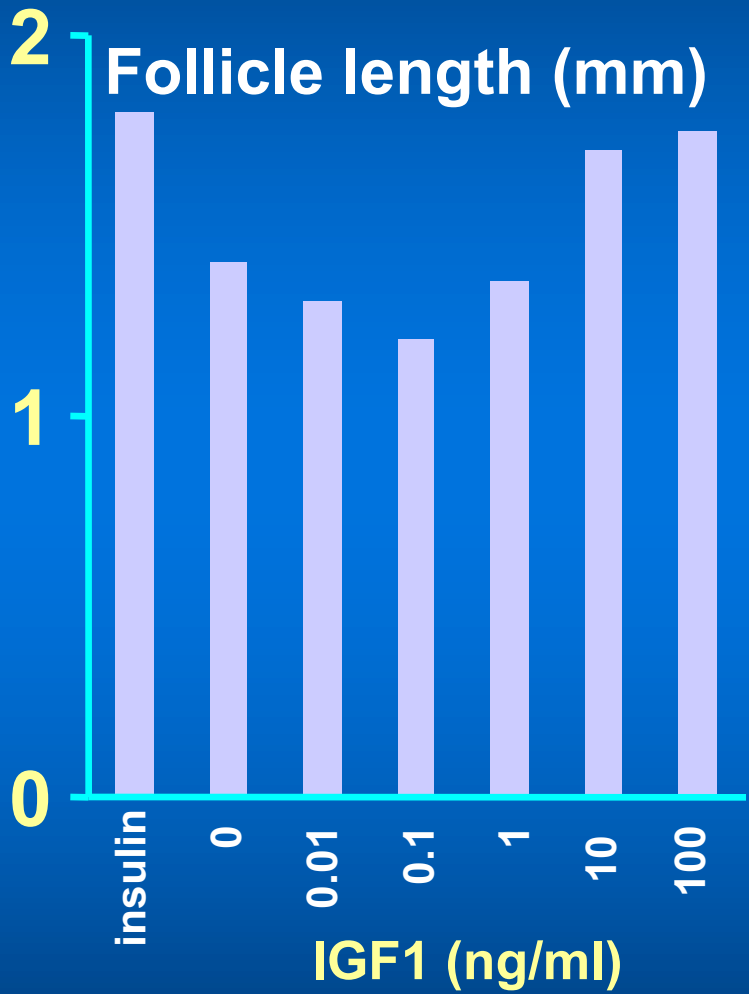
Premium

Quality

Wool



Insulin-like growth factors (IGF) and follicle growth



- Direct effect of IGF1
- IGF BPs located in dermal papilla
- May affect bulb and papilla function

- IGF2 (100ng/ml) needed to return follicle growth to + insulin (10µg/ml) levels

CRC
for
Premium
Quality
Wool