



CRC

for

Premium

Quality

Wool

Core Sampling

Produced for the CRC for Premium Quality Wool undergraduate program by;
Angus Ireland, Australian Wool Testing Authority Ltd.



Standards

IWTO Core Test Regulations

- The purpose of core sampling is to obtain a sample (approx. 1kg) of raw wool snippets which is ***representative*** of the sale lot.

CRC

for

Premium

Quality

Wool



CRC

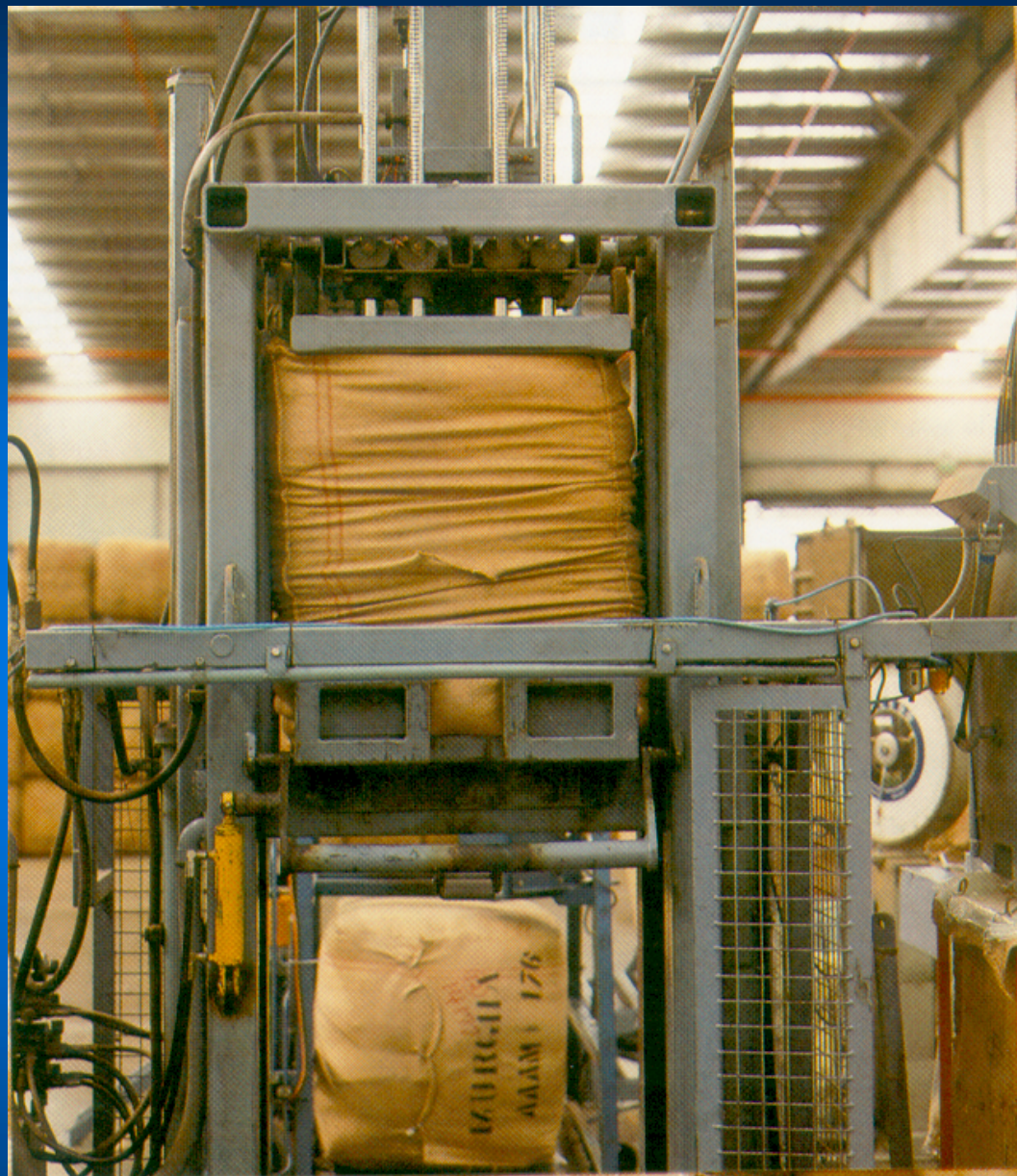
for

Premium

Quality

Wool

Core Sampling Apparatus



Source : "Testing Your Woolclip", AWTA customer brochure



Sampling Method

- i) 20 cores per sale lot (minimum)
- ii) Every bale sampled
- iii) Same number of cores per bale
- iv) Cores randomly placed
- v) Core penetrates full depth

CRC

for

Premium

Quality

Wool



Sample EVERY bale

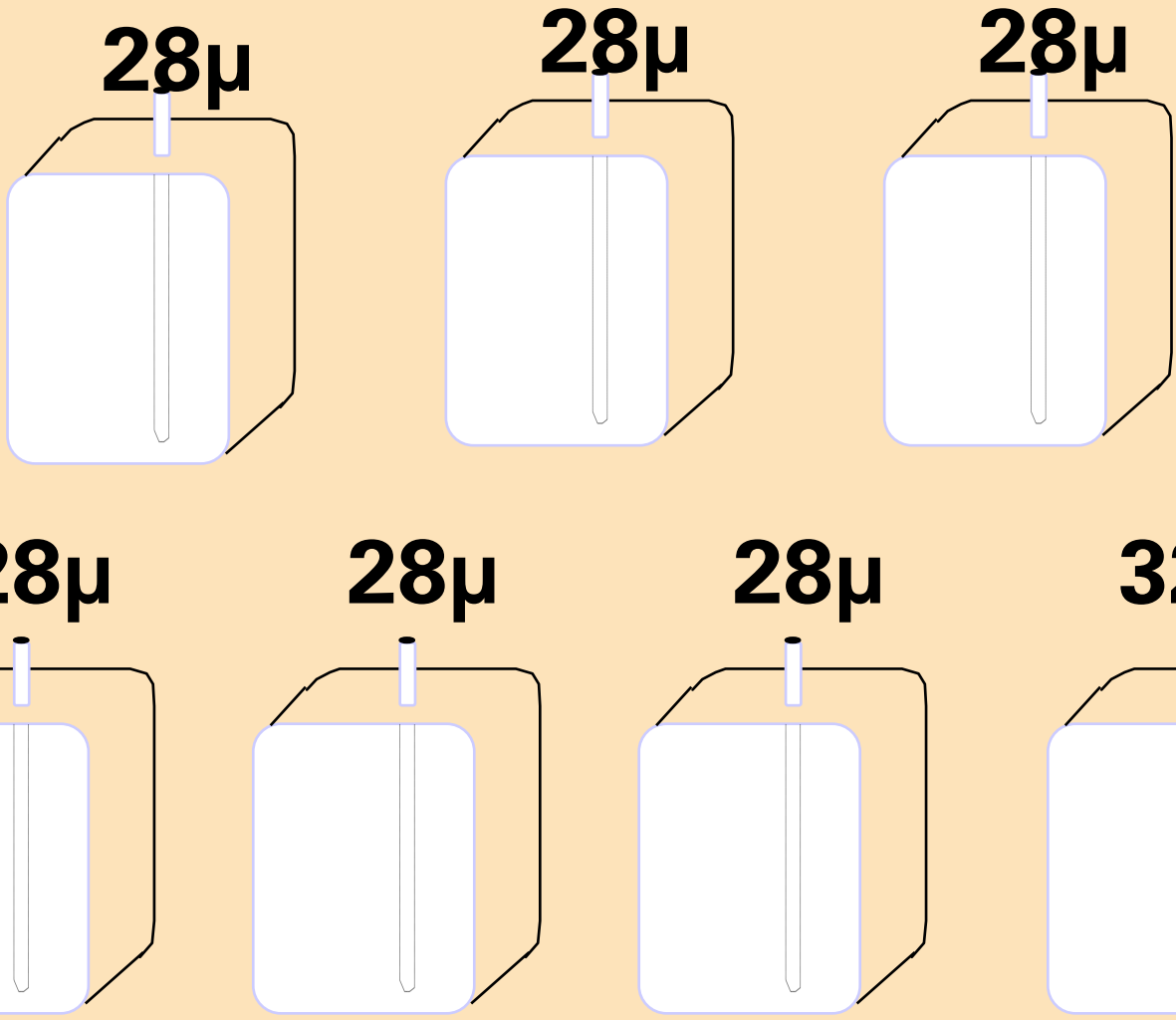
CRC

for

Premium

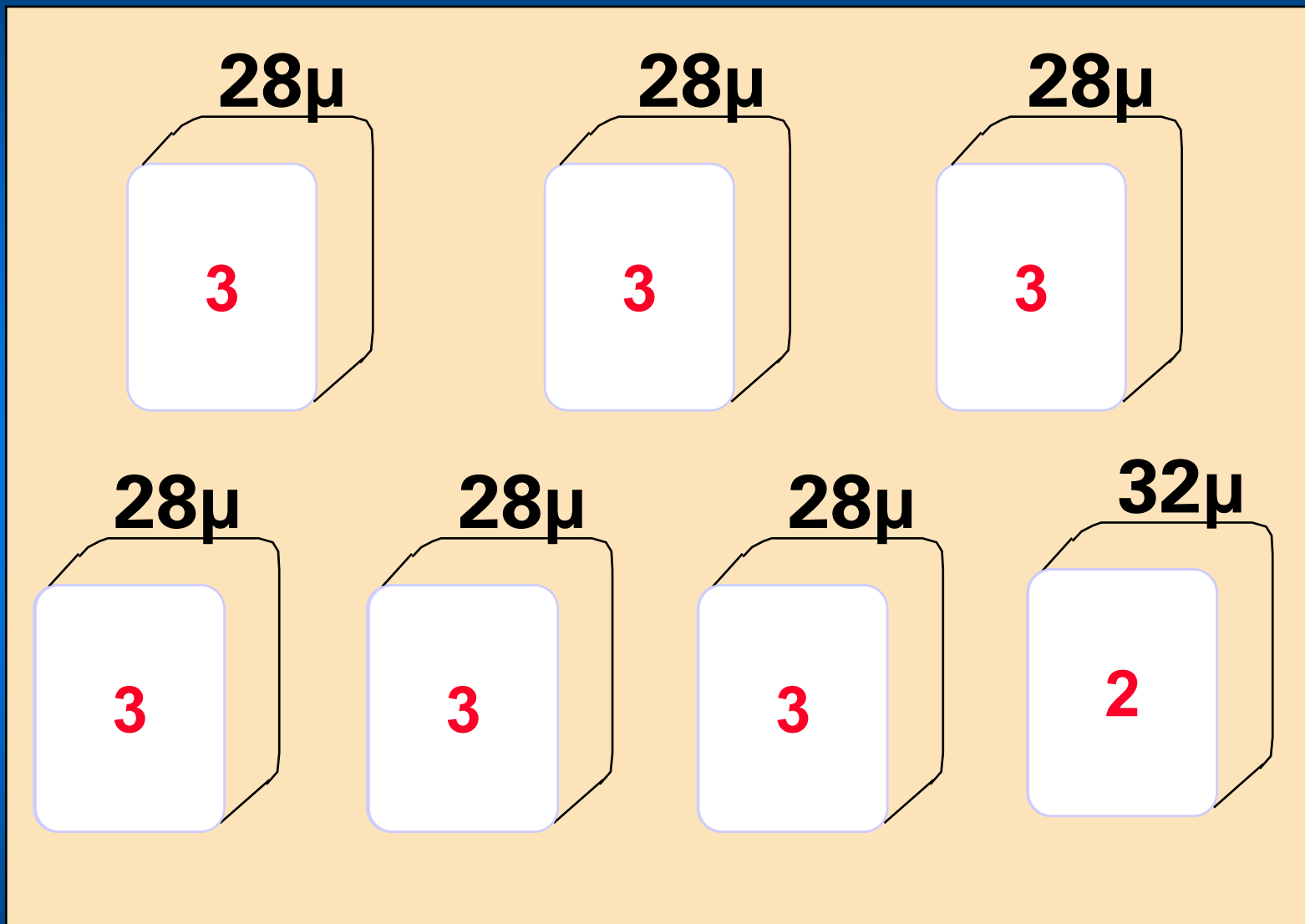
Quality

Wool





Same number of cores EVERY bale



CRC

for

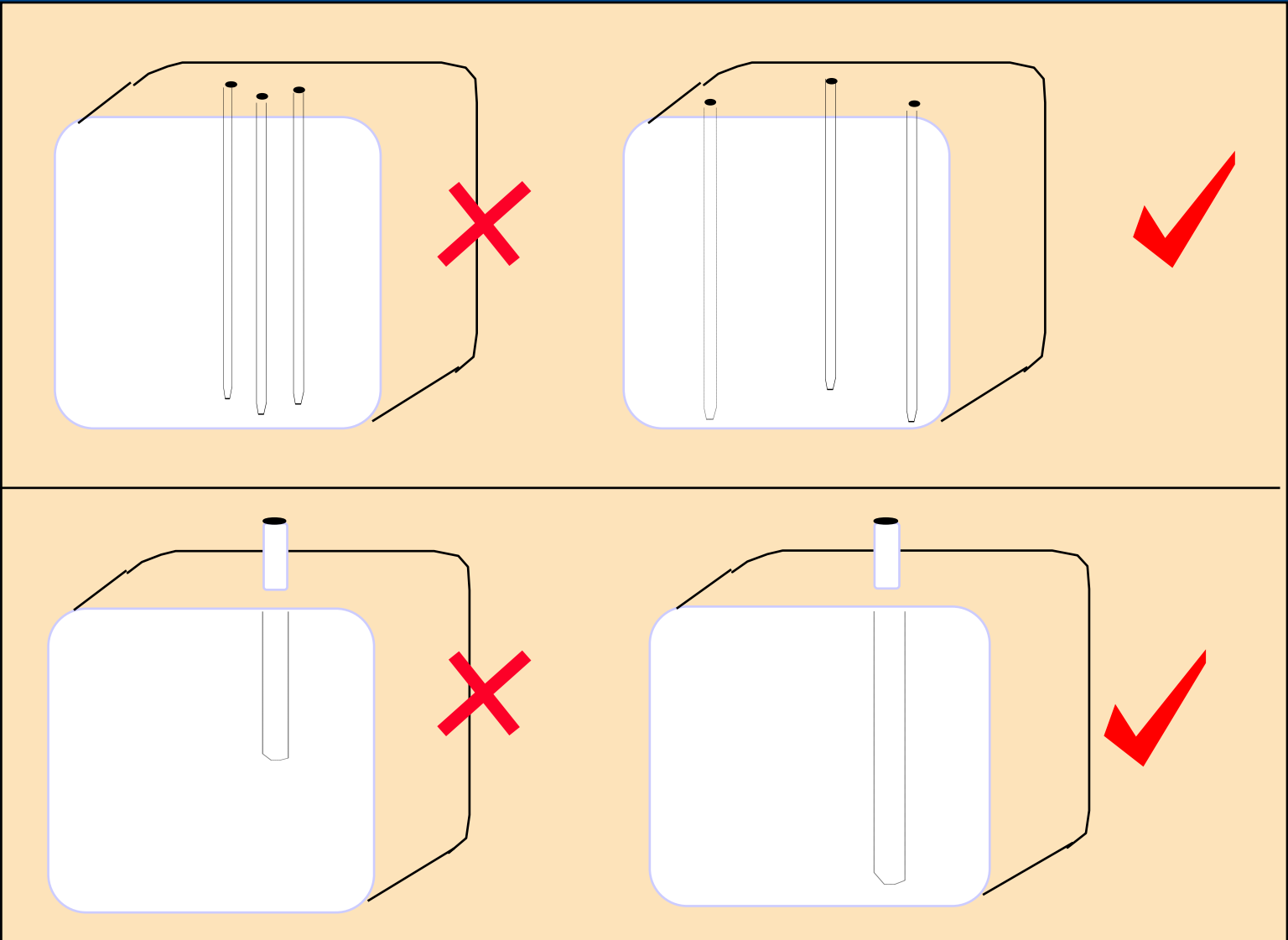
Premium

Quality

Wool



Random & Full Depth cores



CRC

for

Premium

Quality

Wool