



CRC

for

Premium

Quality

Wool

# Specification of Carding Wools

Produced for the CRC for Premium Quality Wool undergraduate program by;  
Ms. L. Osborne, The University of New South Wales.



# Specification on the Woollen System

## Trading Points

**GREASY  
WOOL**

**CLEAN  
PRODUCT**

**YARN**

fibre diameter  
yield  
VM  
staple length  
CV staple length  
colour

fibre diameter  
colour  
fibre length?  
strength?

linear density  
yarn strength  
yarn evenness

CRC

for

Premium

Quality

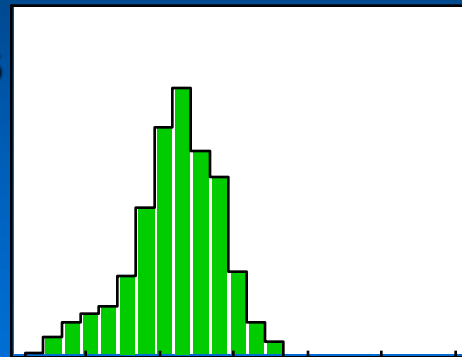
Wool



# Staple Length Distribution

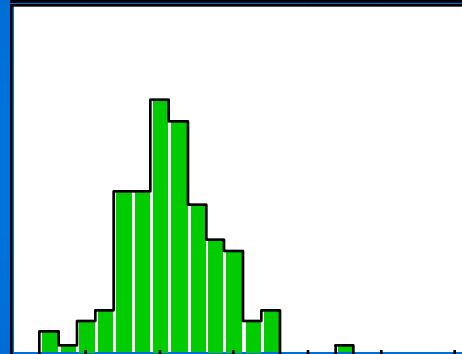
## Individual Sale Lots

Lambs



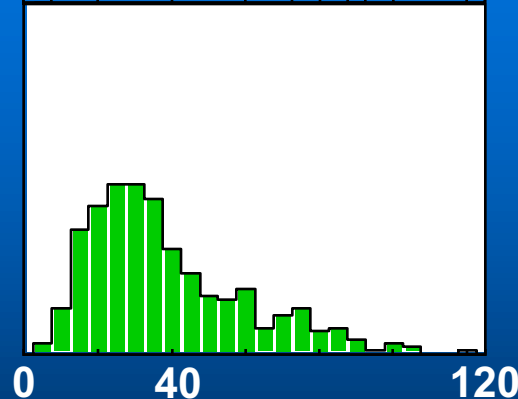
Mean: 46mm  
CV: 26%

Crutchings



Mean: 45mm  
CV: 29%

Locks



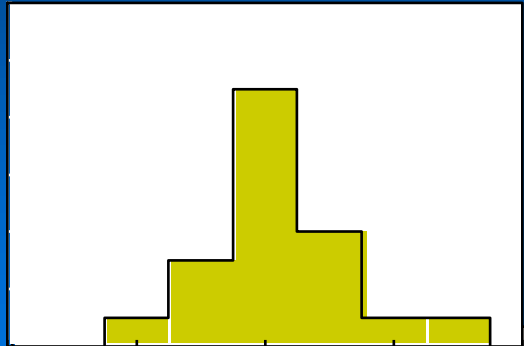
Mean: 37mm  
CV: 59%

Length (mm)

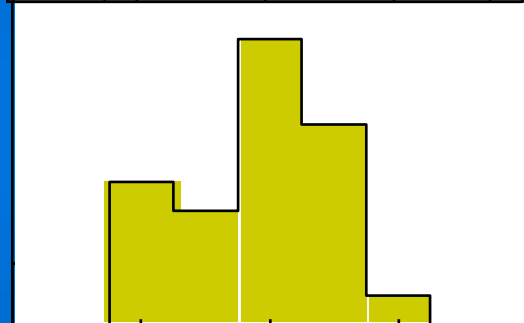


# Ranges of Mean Staple Lengths (Categories of Sale Lots)

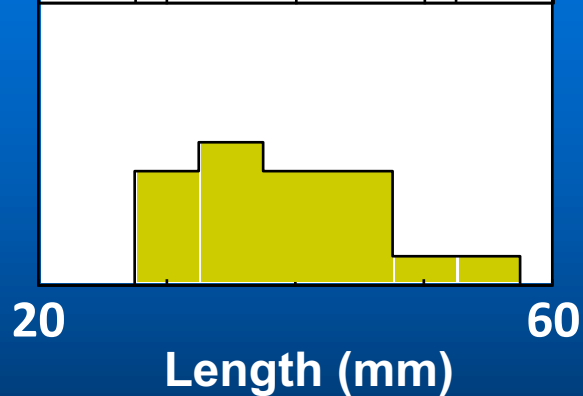
**GOOD LAMBS**  
19.6 - 20.5 $\mu$ m



**CRUTCHINGS**  
21.1 - 23.0 $\mu$ m



**LOCKS**  
21.1 - 23.0 $\mu$ m



CRC

for

Premium

Quality

Wool