



CRC

for

Premium

Quality

Wool

Optical Fibre Diameter Analyser: Medullation Measurement

Produced for the CRC for Premium Quality Wool undergraduate program by;
Mark Brims, BSC Electronics Pty Ltd., and
Dr. Peter Auer, The University of New South Wales.



Opacity measurement

- OFDA option to estimate medullated & flat fibres
- no extra sampling or measurement



CRC
for
Premium
Quality
Wool



Field Images

CRC

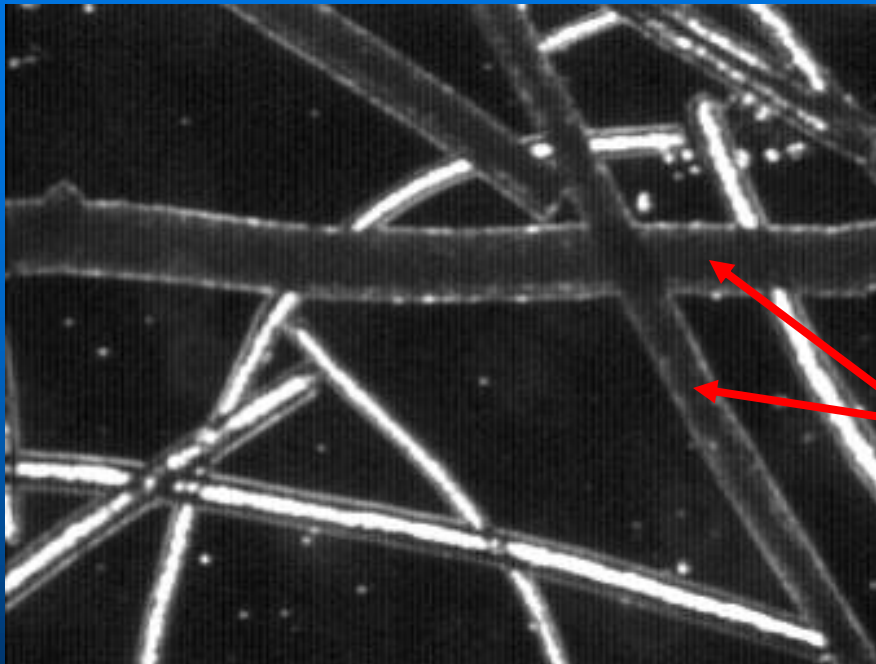
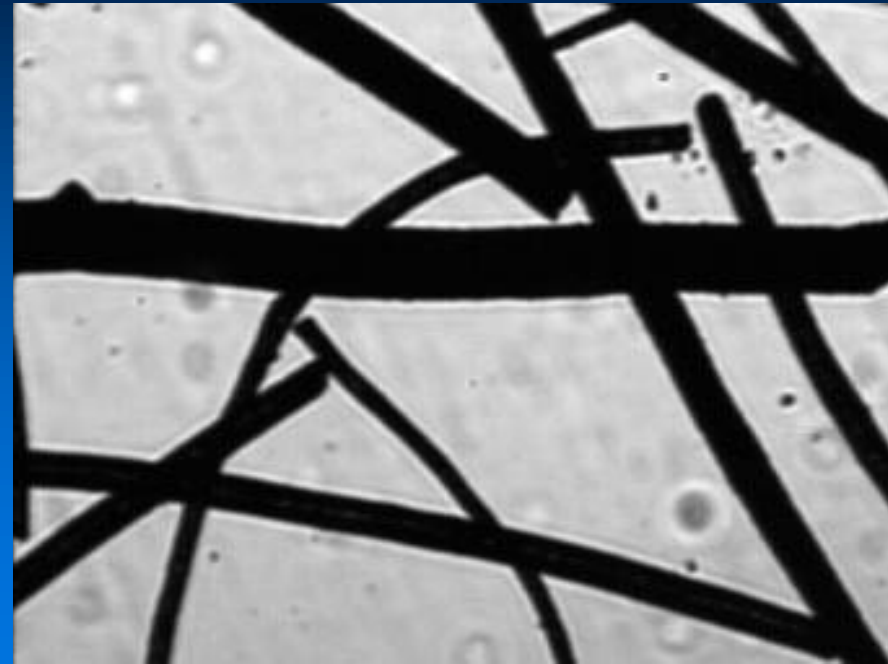
for

Premium

Quality

Wool

Dark Field



Bright Field

Medullated fibres
appear dark



Standard

- **IWTO-57-96**
 - **Determination of medullated fibre content of wool and mohair samples by opacity measurements using OFDA**

CRC

for

Premium

Quality

Wool



CRC
for
Premium
Quality
Wool

Fibre Diameter histogram with medullation option

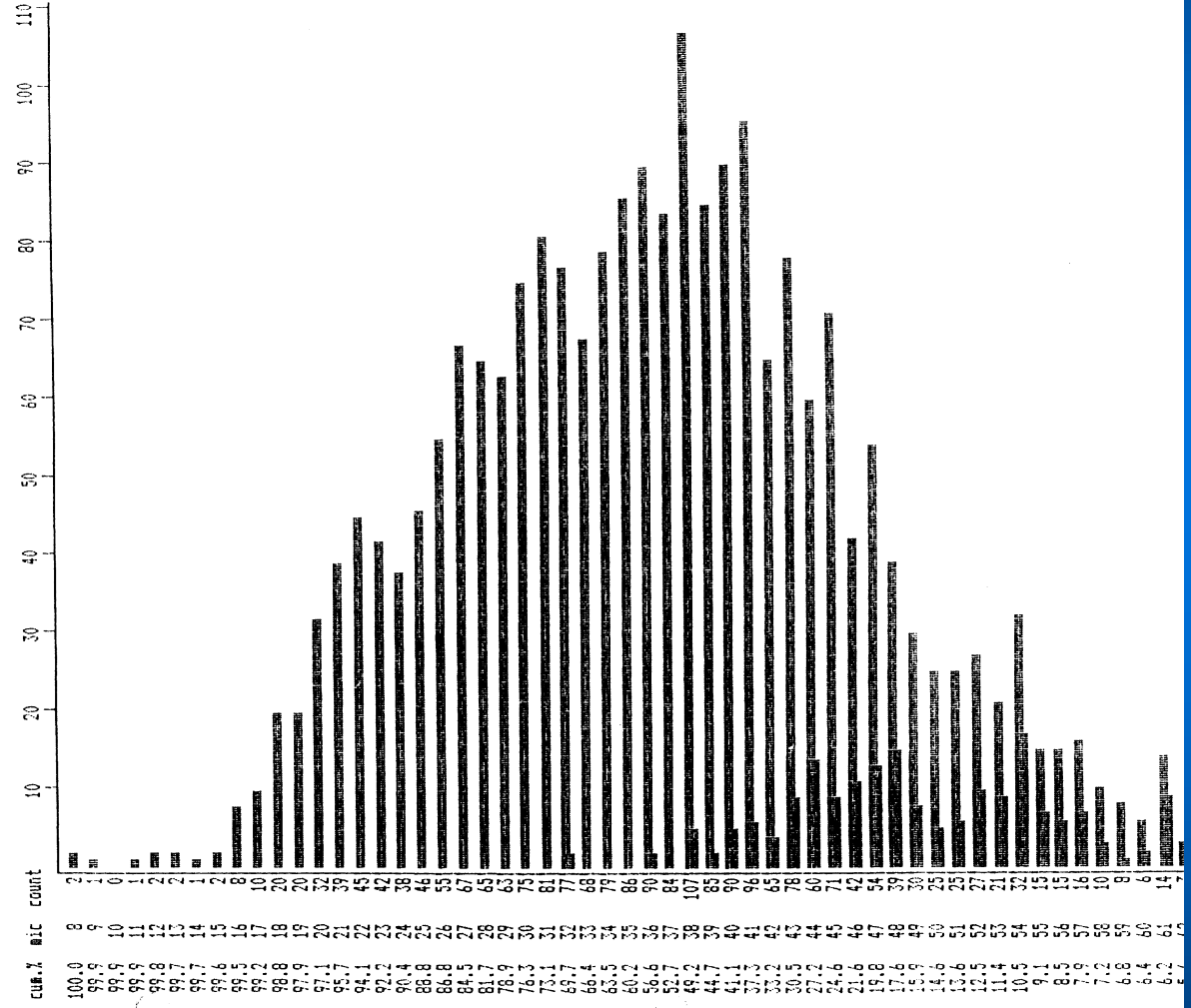
Appendix A: Example Printout With Medullation Option

Sample demonstration (>10% medullation)

Date : 07Feb94 Mean = 38.81 u
 Sample ID : 1273 SD = 14.08 u
 Description : mohair CV = 36.3 %
 Lot/Client : A. Peterson Sample size = 2364
 Operator : AP

76.3 % of fibres are >= 30 u.
 5% of fibres are 25.4 u above mean.

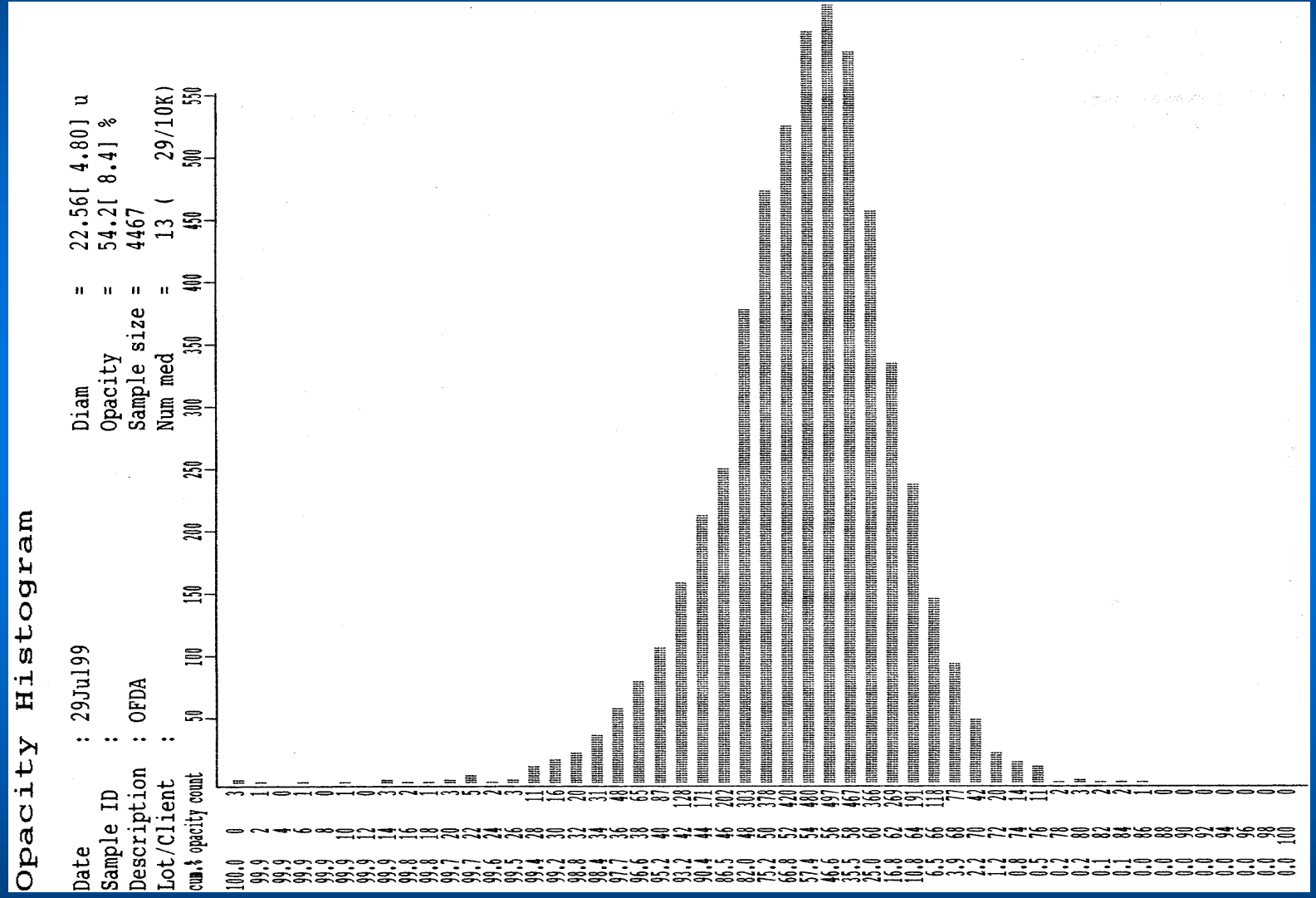
OFDA017:1.73ag Cal: D=4.9684*WH -2.70
 Num med= 285(12.1%) incl. 49 flat Mean opacity= 54.6[17.0] %
 Mean med diam= 60.4[19.3] u % med by vol= 28.5%, by wt= 18.3%
 Dense Focus >Foc Time FTime DkAv Min Light Flsh NseSD
 20[17] 10.2[1.2] 20 212 16 10.8 14.3 101.3[2.0] 44 1.9





Opacity histogram

CRC
for
Premium
Quality
Wool





Further information

- <http://www.ofda.com/latest.html>

CRC

for

Premium

Quality

Wool