



CRC

for

Premium

Quality

Wool

# Stockpiles in the Wool Industry

Produced for the CRC for Premium Quality Wool undergraduate program by;  
Ben Russell, NSW Farmers Association.



# WI and Farm Stockpiles

	1991	1992	1993	1994	1995	1996	1997	1998
<b>WI bales (million)</b>	4.6	4.1	3.9	3.7	3.0	2.3	1.6	1.1
<b>WI (million kg)</b>	532	470	456	423	361	259	179	129
<b>Grower bales (millions)</b>	0.25	0.12	0.18	0.12	0.14	0.21	0.19	0.28
<b>Grower bales (million kg)</b>	14	14	20	14	16	24	22	32

CRC

for

Premium

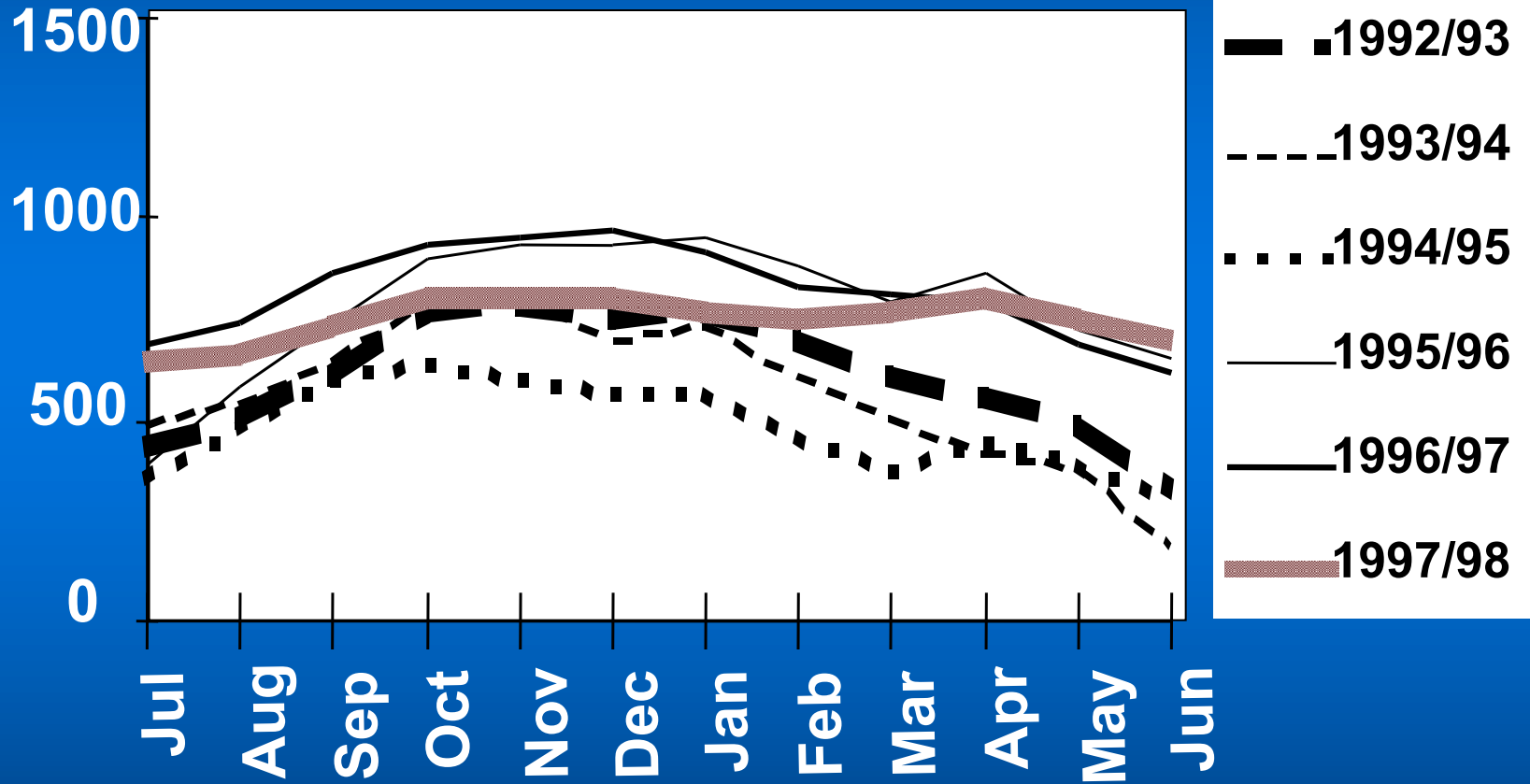
Quality

Wool



# UNSOLD wool in broker stores

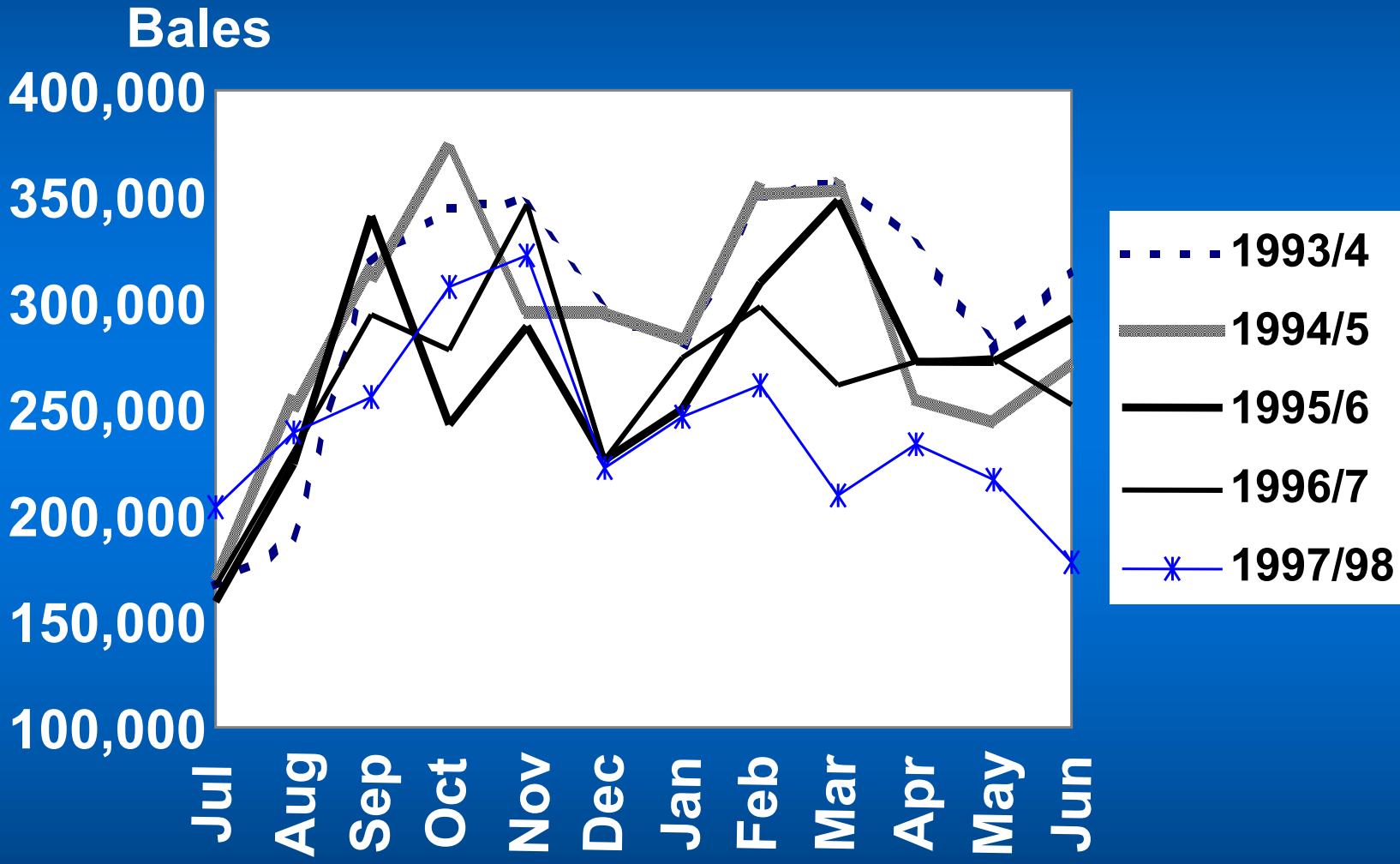
'000 bales



CRC  
for  
Premium  
Quality  
Wool



# SOLD wool in broker stores awaiting shipment



CRC  
for  
Premium  
Quality  
Wool



# Early-stage and Top Stock Summary

	1991	1992	1993	1994	1995	1996	1997	1998
<b>WI</b>	<b>532</b>	<b>470</b>	<b>456</b>	<b>423</b>	<b>361</b>	<b>259</b>	<b>179</b>	<b>129</b>
<b>On Farm</b>	<b>14</b>	<b>14</b>	<b>20</b>	<b>14</b>	<b>16</b>	<b>24</b>	<b>22</b>	<b>32</b>
<b>Brokers Stores</b>	<b>17</b>	<b>26</b>	<b>37</b>	<b>22</b>	<b>33</b>	<b>75</b>	<b>70</b>	<b>80</b>
<b>Brokers (sold)</b>	<b>45</b>	<b>47</b>	<b>36</b>	<b>36</b>	<b>31</b>	<b>29</b>	<b>29</b>	<b>20</b>
<b>Other grower countries</b>	<b>294</b>	<b>245</b>	<b>198</b>	<b>177</b>	<b>180</b>	<b>180</b>	<b>150</b>	<b>150</b>
<b>Non-grower countries</b>	<b>157</b>	<b>181</b>	<b>131</b>	<b>173</b>	<b>146</b>	<b>112</b>	<b>112</b>	<b>112</b>
<b>Tops</b>	<b>103</b>	<b>130</b>	<b>177</b>	<b>147</b>	<b>153</b>	<b>118</b>	<b>120</b>	<b>123</b>
<b>Total</b>	<b>1162</b>	<b>1113</b>	<b>1055</b>	<b>992</b>	<b>920</b>	<b>797</b>	<b>682</b>	<b>643</b>

CRC

for

Premium

Quality

Wool



# Stock/Consumption Ratio

•all figures are MKg Clean

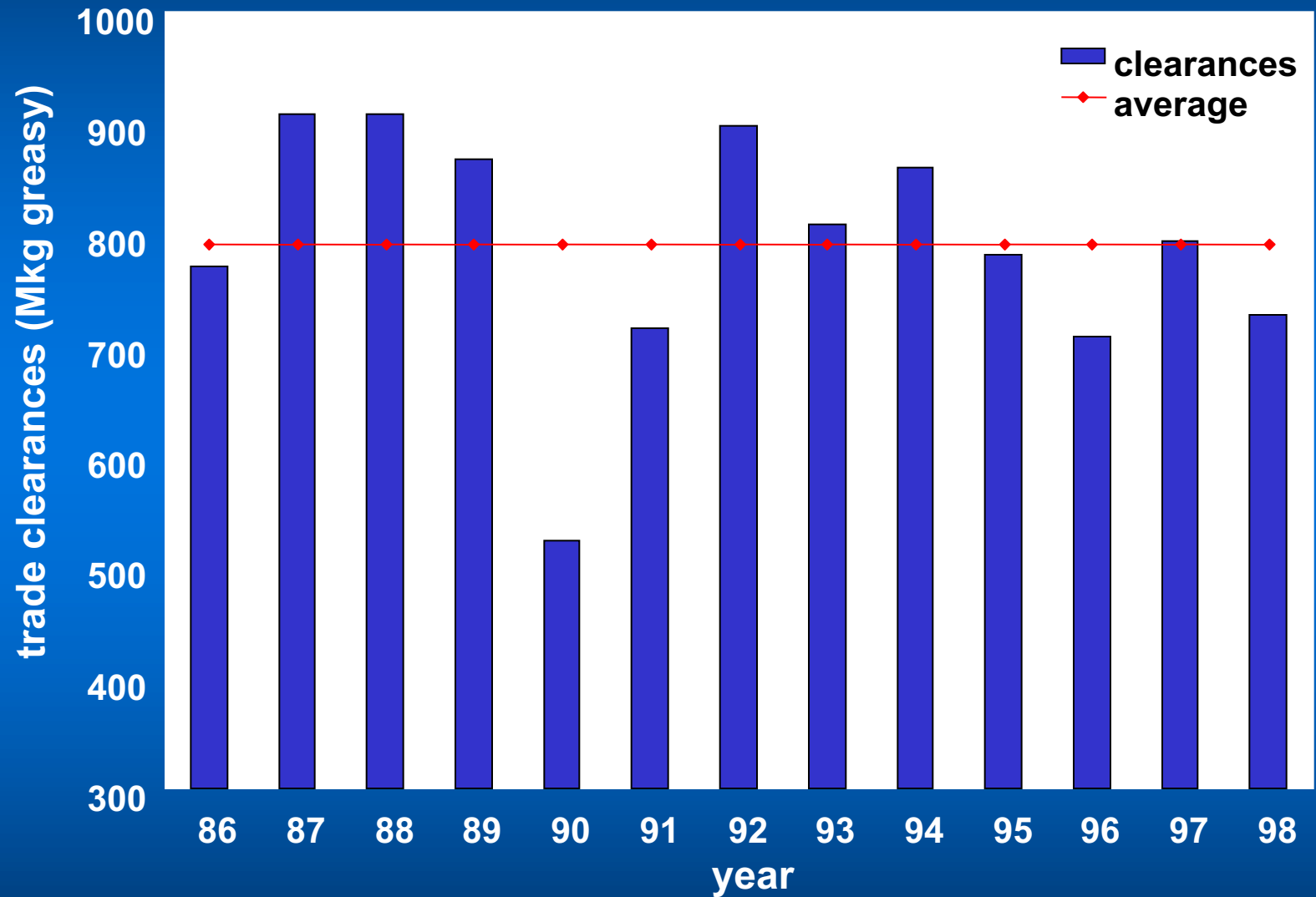
	1991	1992	1993	1994	1995	1996	1997	1998
<b>Global Stocks</b>	1162	1113	1055	992	920	797	682	643
<b>Consumption</b>	1807	1790	1687	1736	1562	1496	1500	1475
<b>Ratio</b>	64%	62%	63%	57%	59%	53%	45%	44%

CRC  
for  
Premium  
Quality  
Wool

Ben Russell  
Source: WI, IWS, WMC



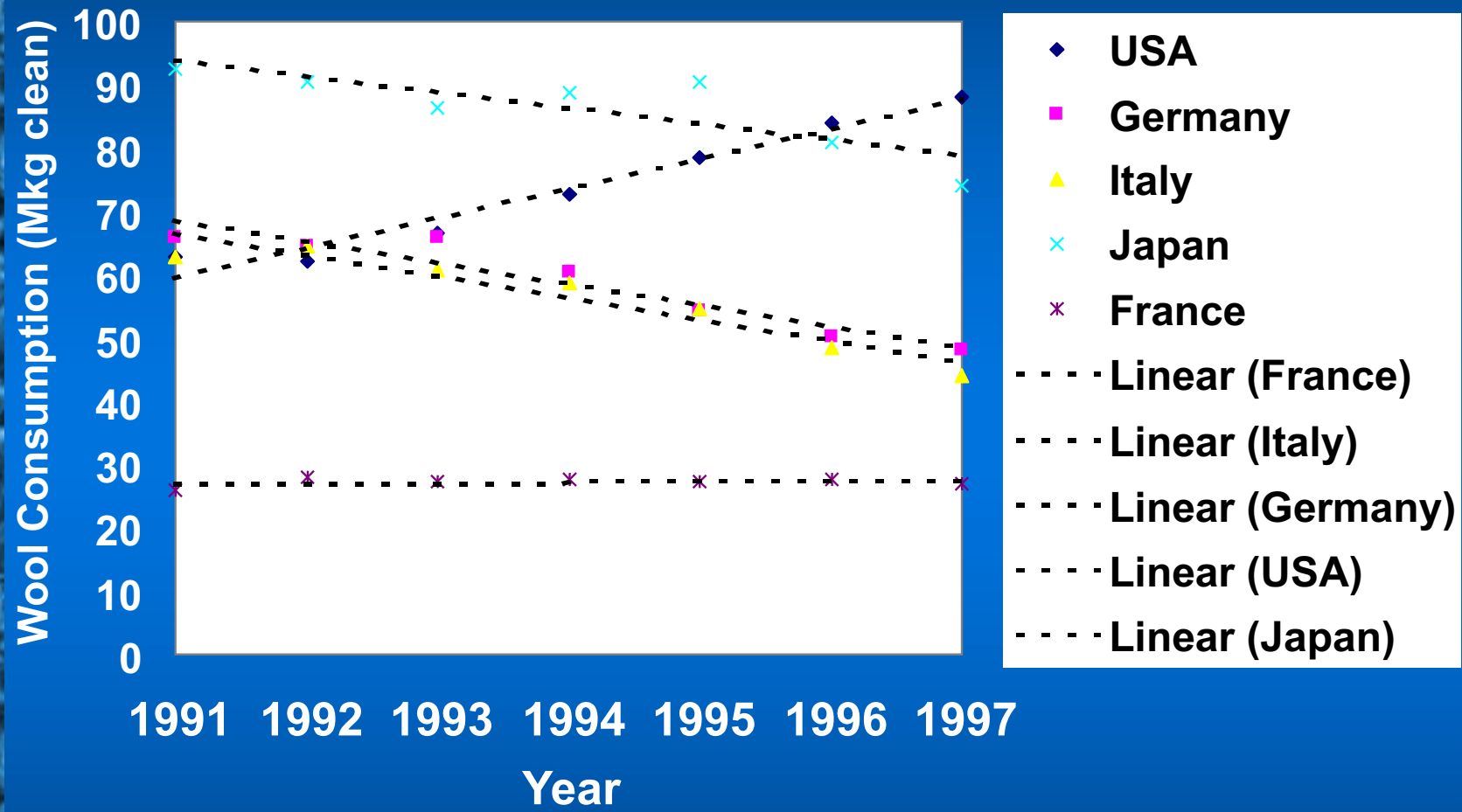
# Trade Clearances (1986 - 1998)



CRC  
for  
Premium  
Quality  
Wool



# Apparel Wool Consumption



CRC  
for  
Premium  
Quality  
Wool





# Stock Holdings - COTTON

Ratio of global cotton stocks to consumption

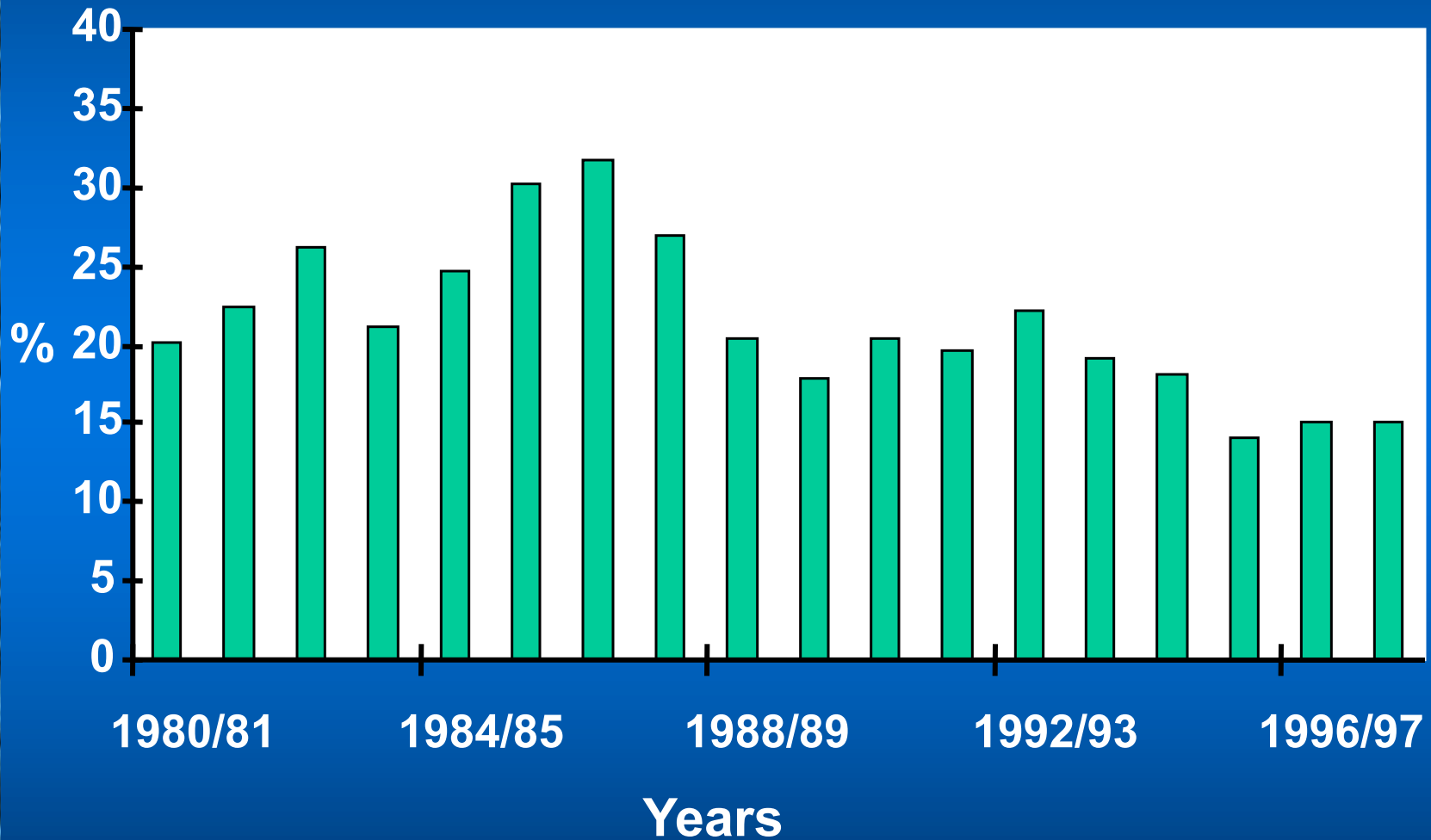


CRC  
for  
Premium  
Quality  
Wool



# Stock Holdings - GRAIN

Coarse grain stocks as a % of consumption



CRC  
for  
Premium  
Quality  
Wool

Ben Russell  
Source: USDA



# Take-home points

- Woolgrowers are demonstrating a propensity to hold stocks.
- Some ESP are emerging as likely stockholders.
- Forward marketing systems allow financial leverage and more secure holding of stock.
- Specificity makes stockholding at latter stage processing less attractive

CRC

for

Premium

Quality

Wool