



CRC

for

Premium

Quality

Wool

Sources of Variation in the Non-fibre components of the Fleece

Produced for the CRC for Premium Quality Wool undergraduate program by;
Dr. Brad Crook, The University of New England.



Non-fibre components of the greasy fleece: Sources of Variation (%)

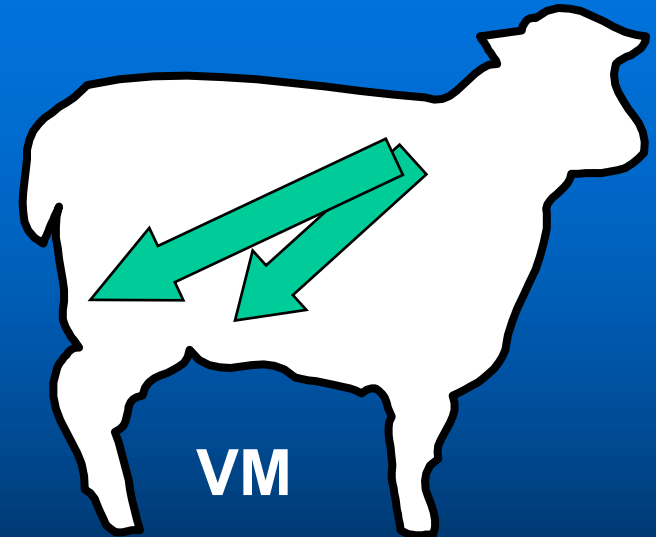
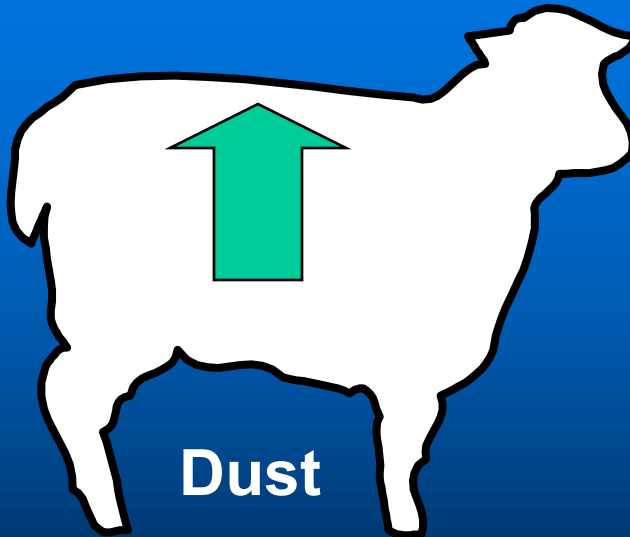
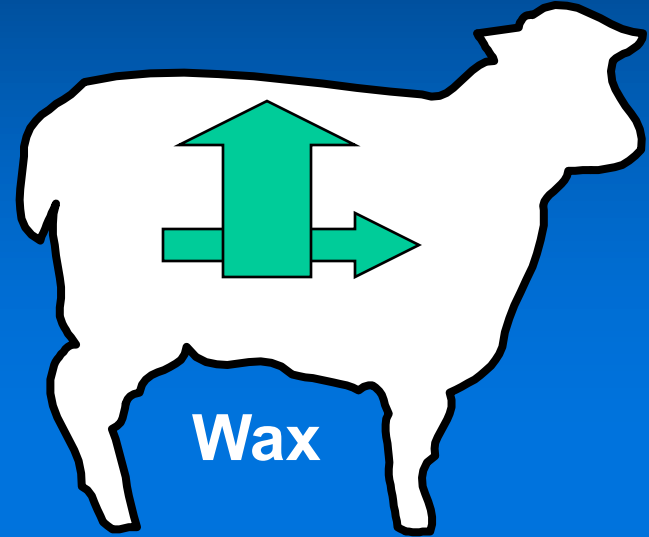
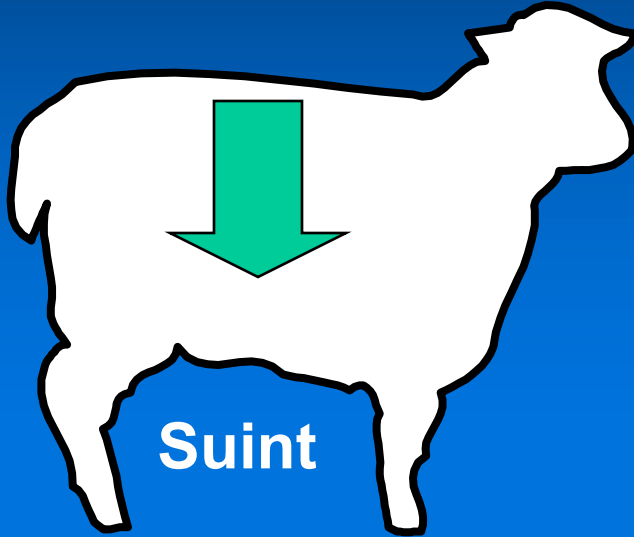
	Within	Between	Non-genetic factors
%suint	36	64	Year, bstatus, age
% wax	42	58	Year, age
% dust	82	18	Year
% VM	89	11	Year, age

as % of total variation within mob

CRC
for
Premium
Quality
Wool



Within-fleece gradients for non-fleece components



CRC

for

Premium

Quality

Wool



Correlation between site measurement and estimated fleece average

	Mid Shoulder	Mid Side	Mid Rear
Suint %	0.93	0.94	0.91
Wax %	0.88	0.89	0.90
Dust %	0.60	0.90	0.74
VM %	0.57	0.56	0.67
Washing Yield %	0.65	0.87	0.83

CRC

for

Premium

Quality

Wool

Brad Crook

Source: Thornberry and Atkins (1984)