



CRC

for

Premium

Quality

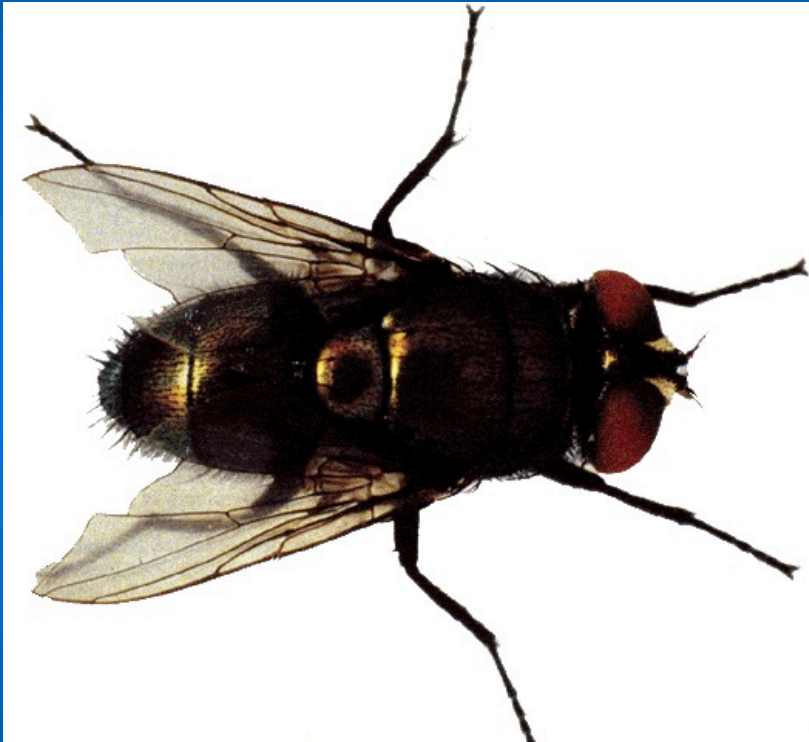
Wool

Disease and Wool Production: Sheep Blowfly

Produced for the CRC for Premium Quality Wool undergraduate program by;
Dr. Steve Walkden-Brown and Dr. Brad Crook, The University of New England.

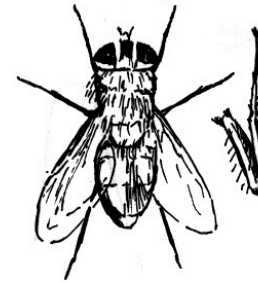


Sheep Blowfly



CRC
for
Premium
Quality
Wool

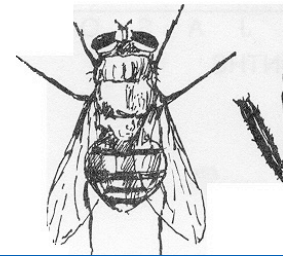
Lucilia cuprina - the Australian sheep blowfly



Foreleg (femur) is green

Narrower abdomen
No dark stripes

Chrysomya rufifacies - the hairy maggot blowfly



Foreleg (femur) is black

Broad abdomen
with dark stripes



Body Strike



CRC

for

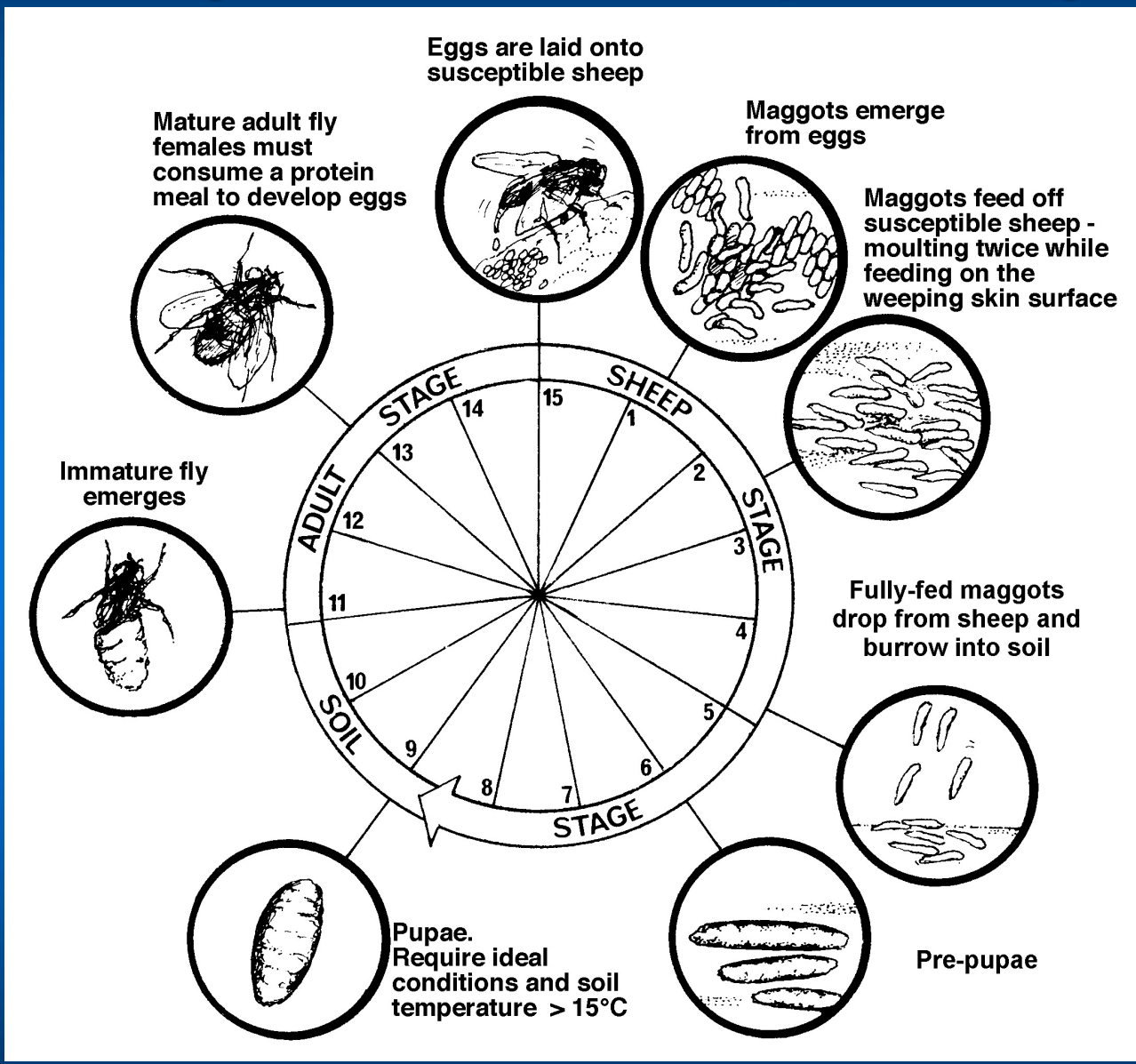
Premium

Quality

Wool



Lifecycle of the sheep blowfly



CRC

for

Premium

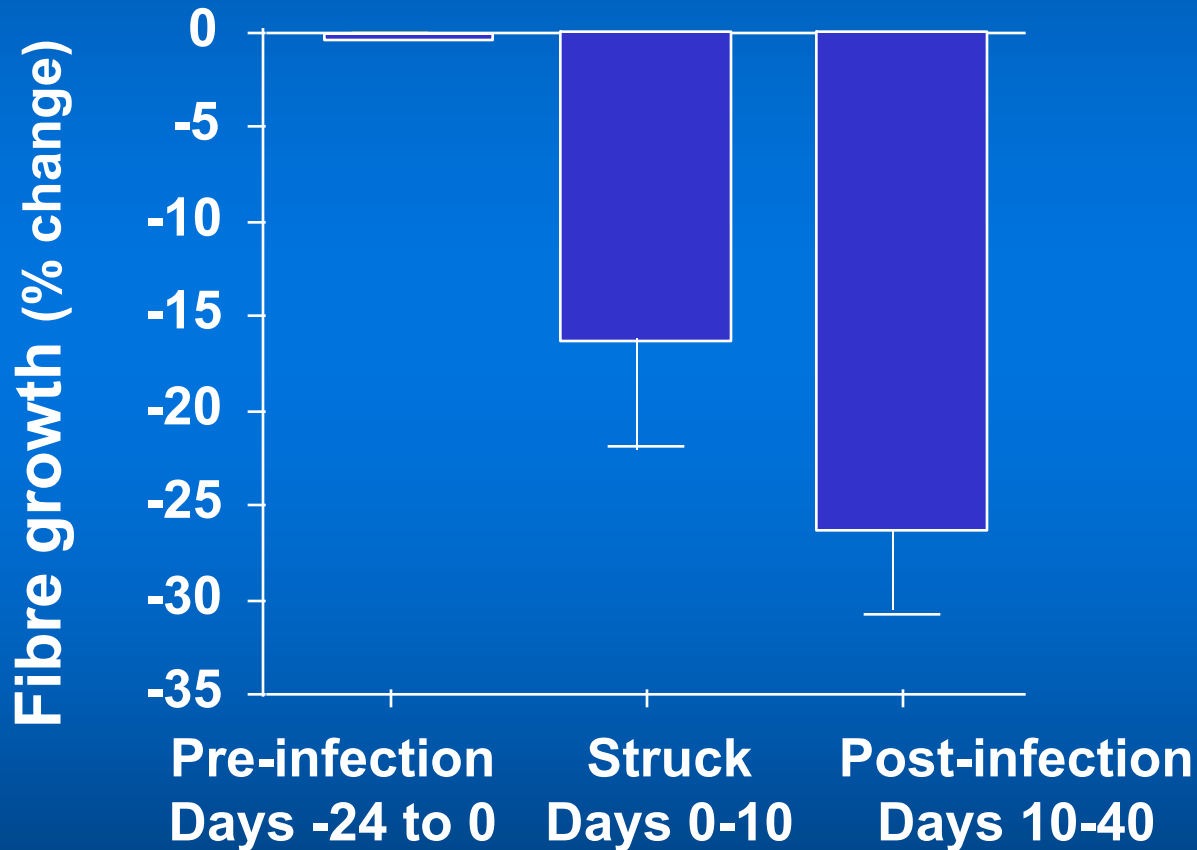
Quality

Wool



Effect of body strike on wool growth measured by autoradiography

Wethers were treated with 500 first instar larvae daily for 8 days resulting in an average area of myiasis of 800 cm².

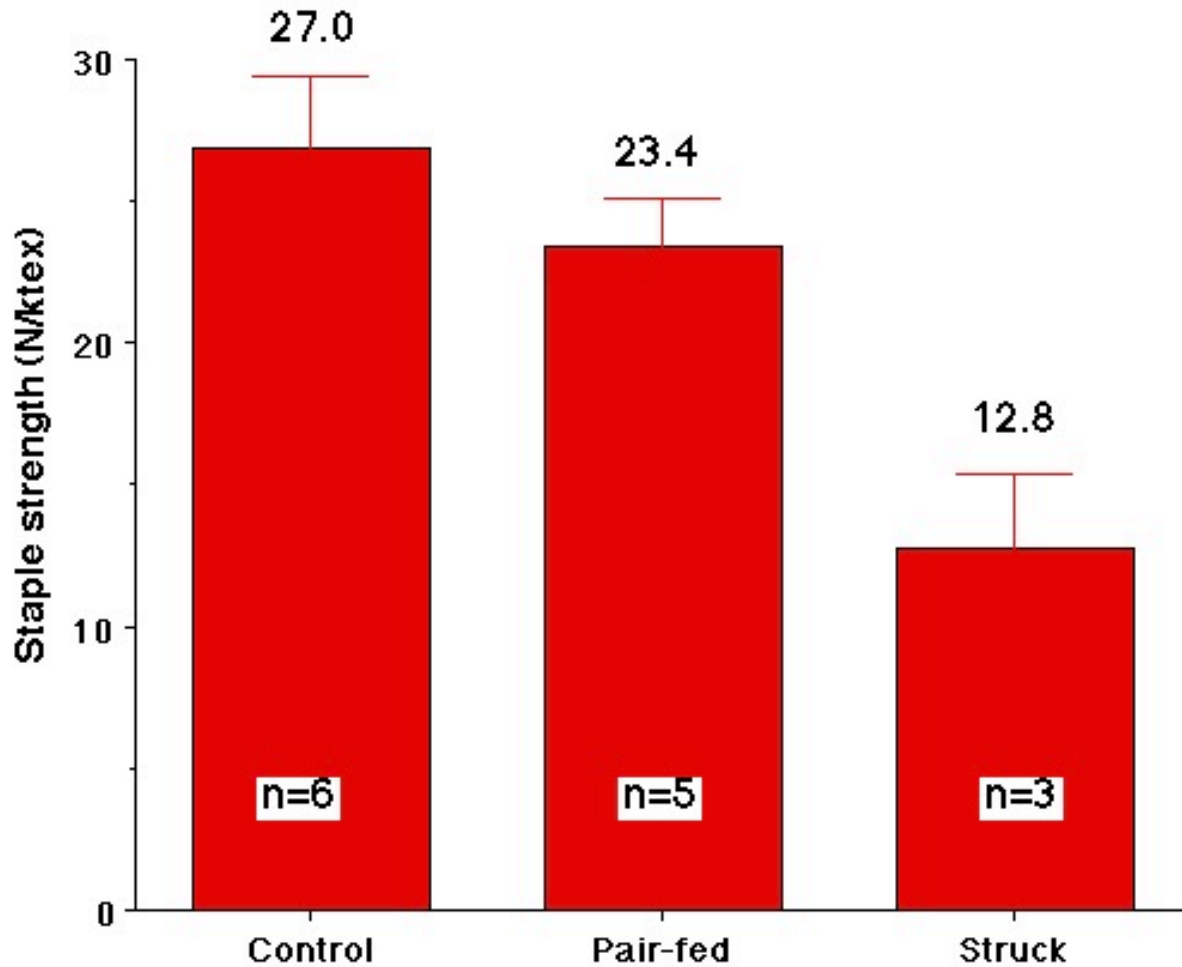


CRC
for
Premium
Quality
Wool

Steve Walkden-Brown
Source: Broadmeadow, M. et al. (1983)



Effect of infection with 500 1st instar *Lucilia cuprina* larvae daily for 8 days on staple strength in merino wethers



CRC
for
Premium
Quality
Wool