



CRC

for

Premium

Quality

Wool

Disease and Wool Production: Body Louse

Produced for the CRC for Premium Quality Wool undergraduate program by;
Dr. Steve Walkden-Brown and Dr. Brad Crook, The University of New England.



Body Louse

Bovicola (Damalinia) ovis

CRC

for

Premium

Quality

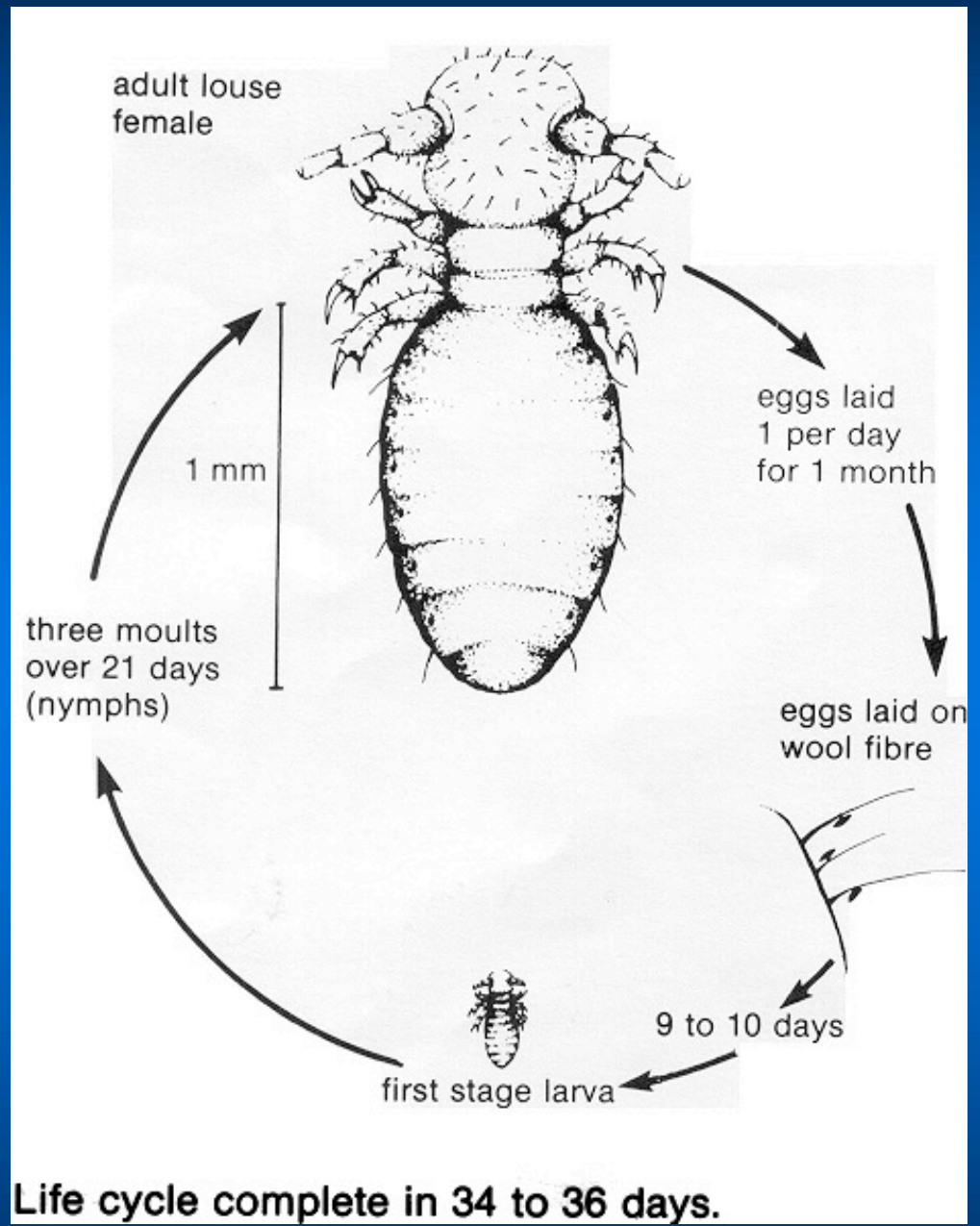
Wool





CRC
for
Premium
Quality
Wool

Lifecycle of the Body Louse



Steve Walkden-Brown
Source: NSW Agriculture



CRC
for
Premium
Quality
Wool

Variable	Level of infestation		
	None	Light	Heavy
GFW (kg)	5.1 ^a	4.9 ^{ab}	4.5 ^b
CFW (kg)	3.4 ^a	3.1 ^{ab}	2.8 ^c
MFD (μm)	24.9 ^a	24.7 ^a	25.0 ^a
Scouring yield (%)	66.8 ^a	63.0 ^b	62.6 ^b
Card loss (%)	9.8 ^a	12.3 ^b	13.3 ^b
Noil (%)	4.1 ^a	4.8 ^b	5.4 ^c
Top and noil yield (%)	60.5 ^a	55.7 ^b	53.3 ^b
Fibre length in top (cm)	8.3 ^a	7.7 ^b	7.2 ^b

Steve Walkden-Brown
Source: Wilkinson et al. (1982)