



CRC

for

Premium

Quality

Wool

# Disease and Wool Production: Gastrointestinal Nematodes

Produced for the CRC for Premium Quality Wool undergraduate program by;  
Dr. Steve Walkden-Brown and Dr. Brad Crook, The University of New England.



# Common gastrointestinal nematodes of sheep

<b>Genus</b>	<b>Common name</b>	<b>Location</b>
<i>Haemonchus</i> spp.	Barbers Pole worm	Abomasum
<i>Ostertagia</i> spp.	Small brown stomach worm	Abomasum
<i>Trichostrongylus</i> spp.	Black scour worm	Small intestine
<i>Nematodirus</i> spp.	Thin necked intestinal worm	Small intestine
<i>Oesophagostomum</i> spp.	Nodule worm	Large intestine
<i>Chabertia ovina</i>	Large mouthed bowel worm	Large intestine
	Whip worm	Large intestine
<i>Trichuris</i> spp.		

CRC

for

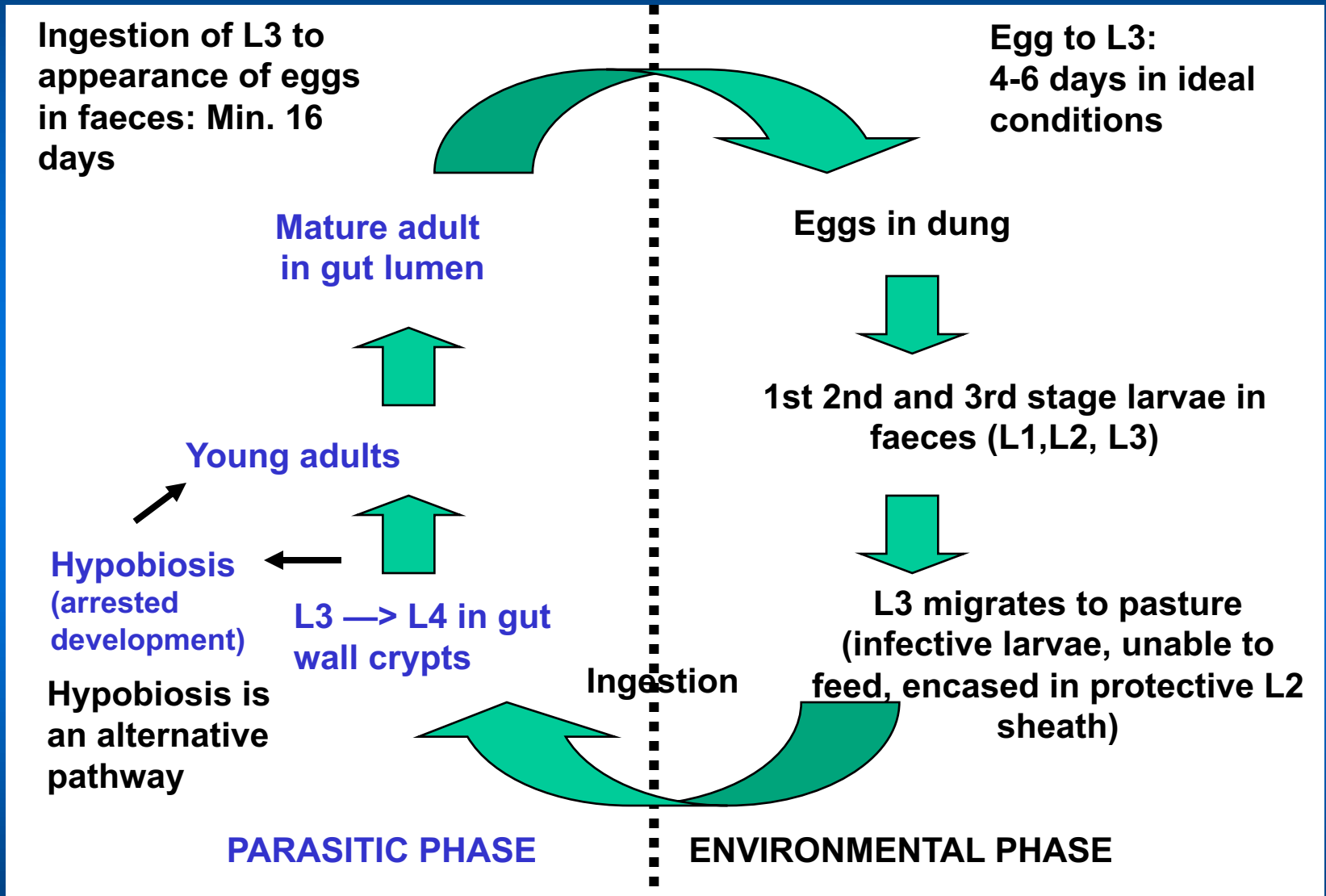
Premium

Quality

Wool



# Life cycle (direct)



CRC  
for  
Premium  
Quality  
Wool

Steve Walkden-Brown



# Signs of gastrointestinal helminthosis

Genus	Anaemia	Scouring	Ill thrift
<i>Haemonchus</i> spp.	+++	-	+++ <sup>b</sup>
<i>Ostertagia</i> spp.	-	+++	+++
<i>Trichostrongylus</i> spp.	-	+++	+++
<i>Nematodirus</i> spp.	-	++	++
<i>Oesophagostomum</i> spp.	-	+ <sup>a</sup>	+++
<i>Chabertia ovina</i>	+	++ <sup>a</sup>	++
<del><i>Trichuris</i> spp.</del>	-	++ <sup>a</sup>	+++

<sup>a</sup> Faeces may contain mucus or blood  
<sup>b</sup> Will kill adult sheep

CRC  
for  
Premium  
Quality  
Wool



**Diarrhoea**  
(scours) caused  
by “black scour  
worm” - note dag  
formation

CRC  
for  
Premium  
Quality  
Wool

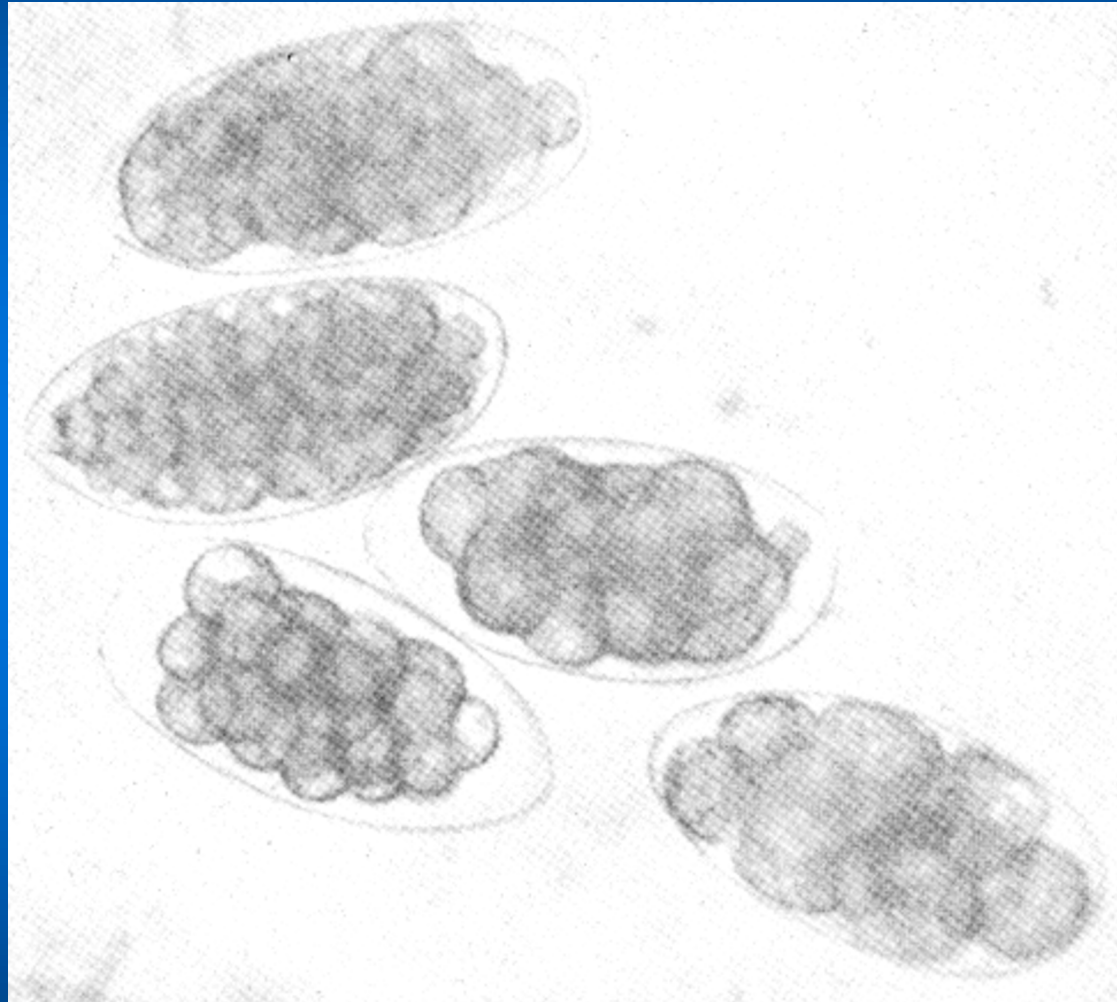
**“Bottle jaw”**  
caused by  
“Barber’s pole  
worm” - loss of  
protein from  
plasma



Steve Walkden-Brown  
Sources: Brightling, A. (1994); Belschner H.G. (1971)



# Most sheep nematode parasites cannot be distinguished by their eggs



CRC

for

Premium

Quality

Wool

Steve Walkden-Brown  
Source: Coles, E.H. (1974)



CRC

for

Premium

Quality

Wool

**Ostertagia circumcincta**



**Hair worms e.g.**  
**Ostertagia**  
**Trichostrongylus**

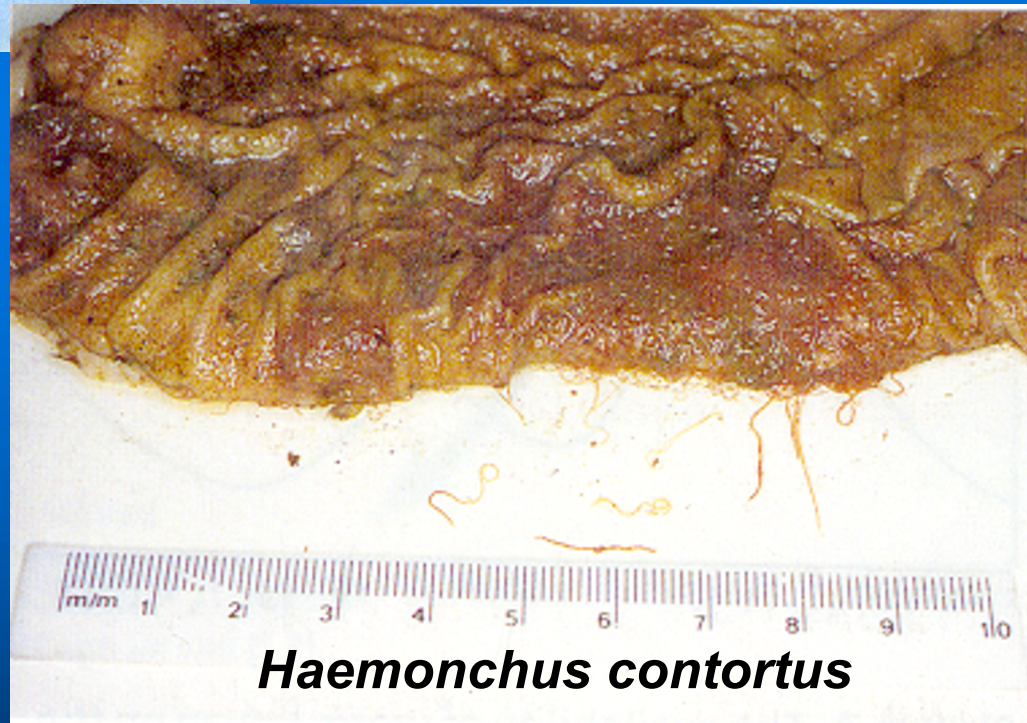
**Larger worms e.g.**

**Haemonchus**

**Chabertia**

**Trichuris**

**Oesophagostomum**



**Haemonchus contortus**

Steve Walkden-Brown  
Source: Brightling, A. (1994)