



CRC

for

Premium

Quality

Wool

# Competing Fibres “Shingosen”

Produced for the CRC for Premium Quality Wool undergraduate program by;  
Dr. Peter Auer, The University of New South Wales.



# Profiles

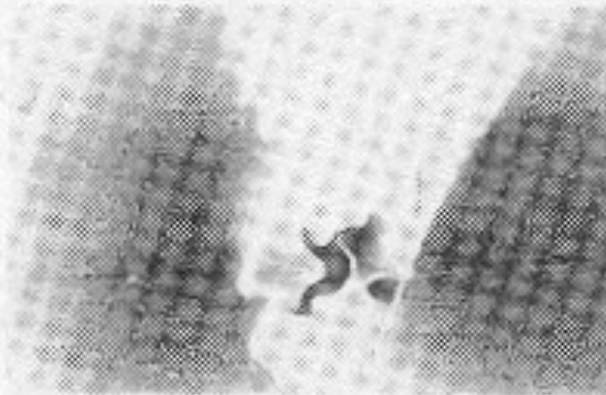
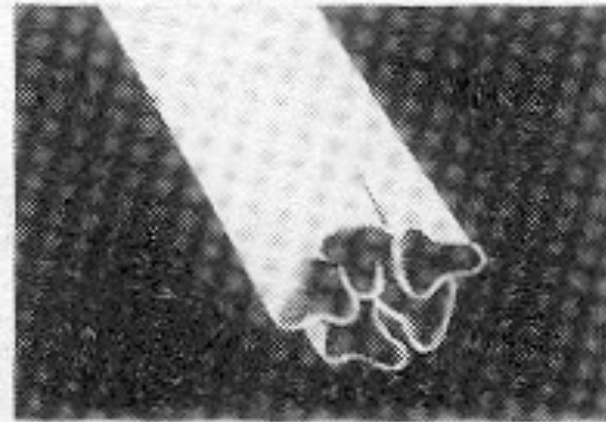
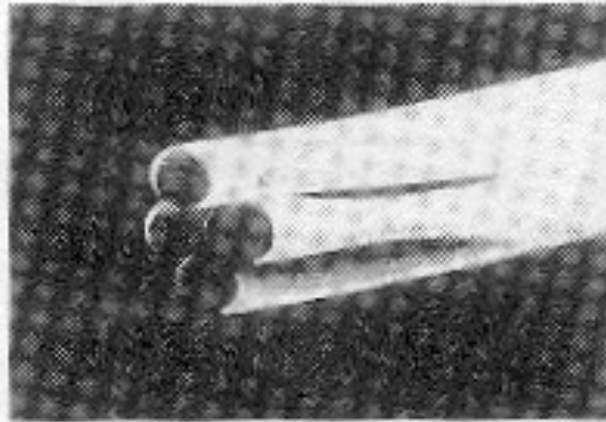
CRC

for

Premium

Quality

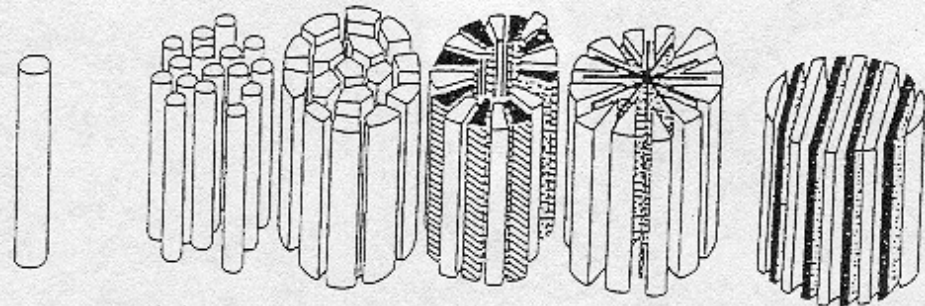
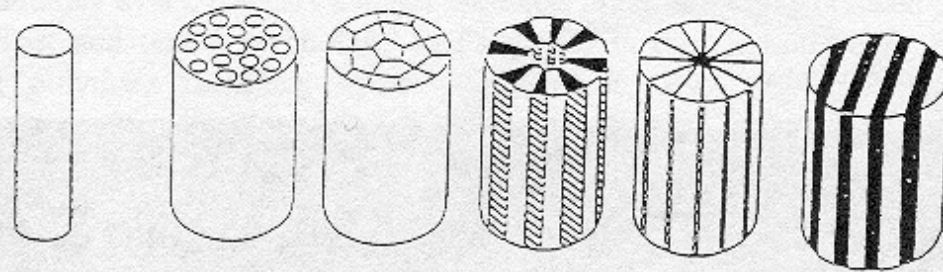
Wool



NON-CIRCULAR CROSS-SECTION



# Ultra-fine filament



Islands-in-a-sea

Direct Spinning  
Surface Dissolution

Separation type

Multi-layer type

Figure 5: Four types of ultra-fine filament production

CRC

for

Premium

Quality

Wool



# Suede-type artificial leather

CRC  
for  
Premium  
Quality  
Wool

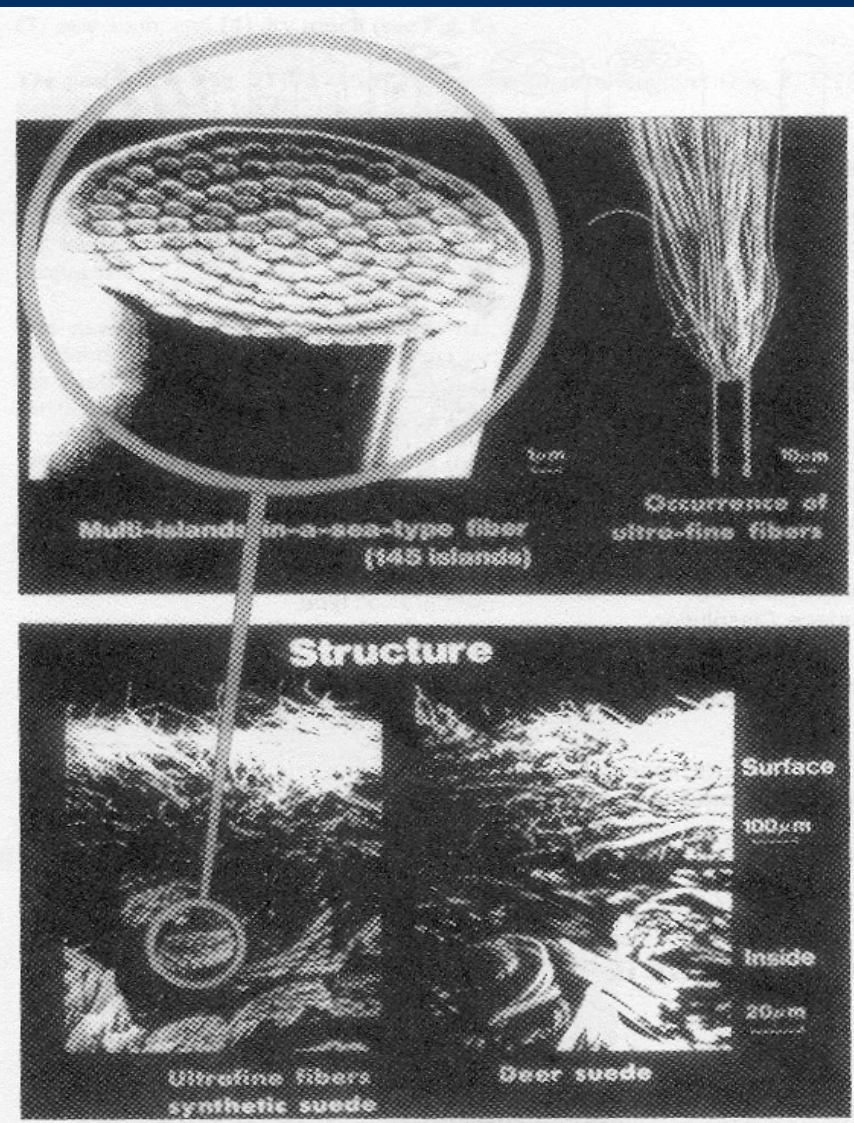


Figure 4: Suede-type artificial leather from ultra-fine polyester fiber



CRC  
for  
Premium  
Quality  
Wool

# Peach Skin Type Shingosen

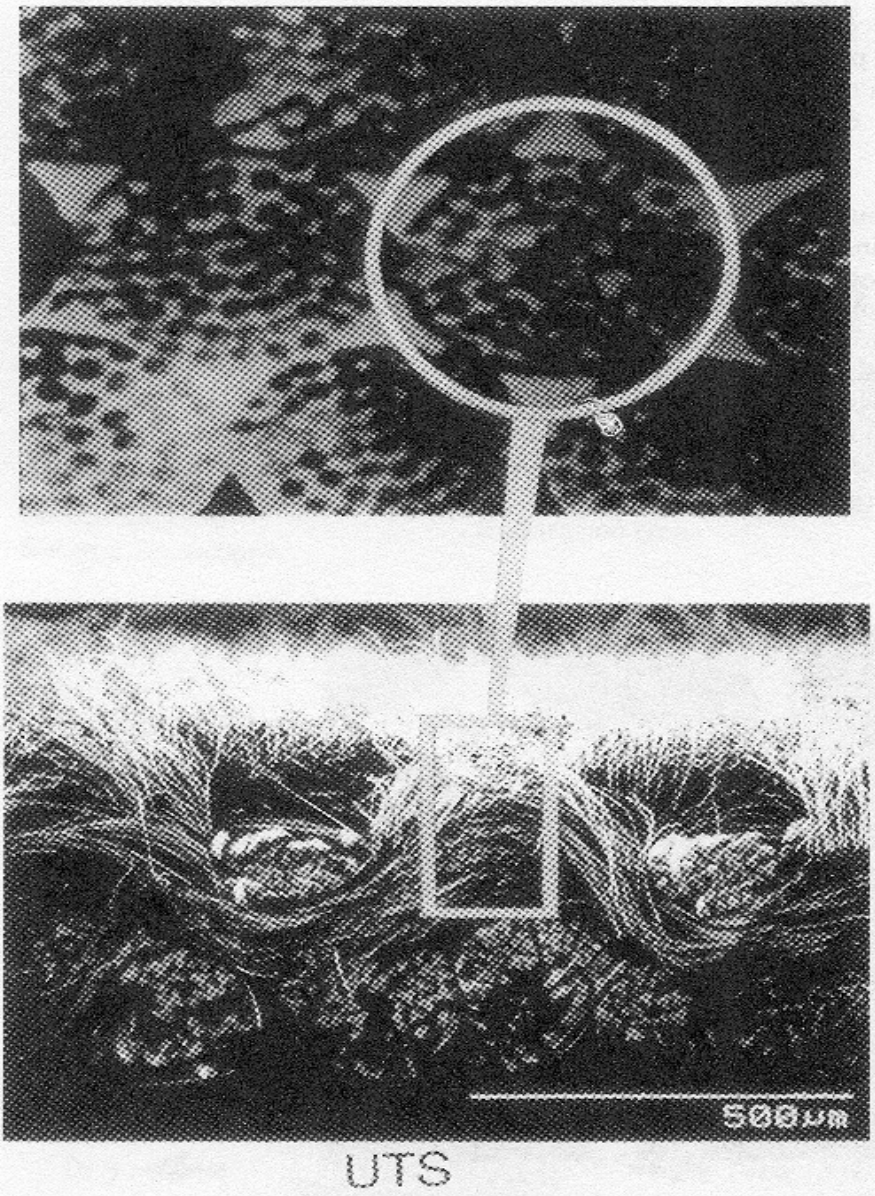


Figure 8: SEM view of shingosen (peach skin type, UTS®)

Source: Okamoto, M. & Kajiwara, K. (1995)



# New Silky Type Shingosen

CRC  
for  
Premium  
Quality  
Wool

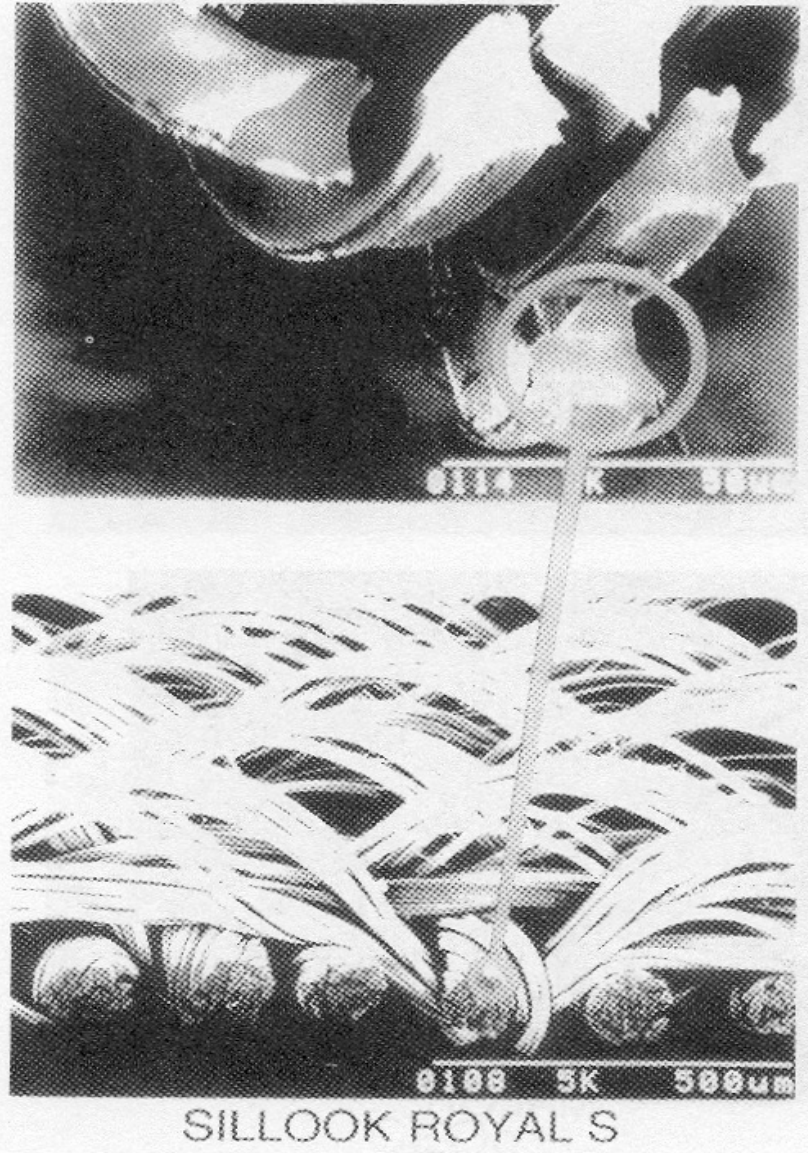
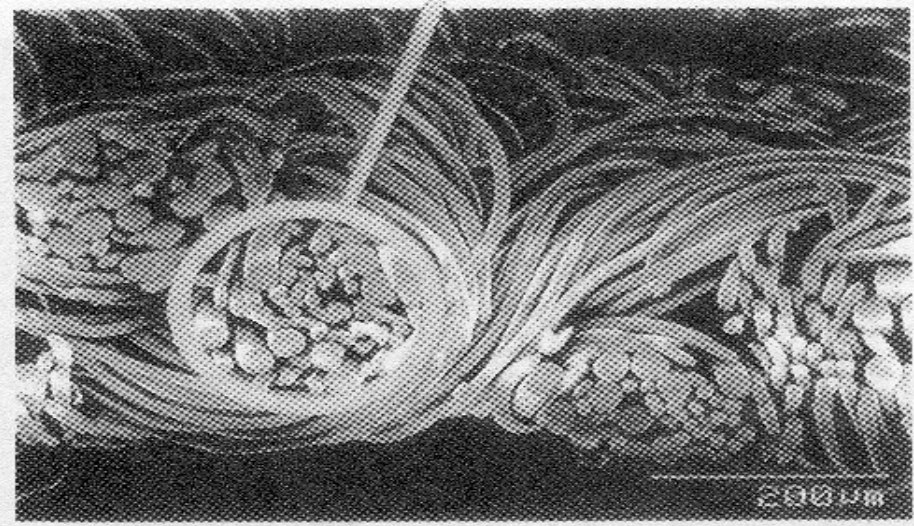
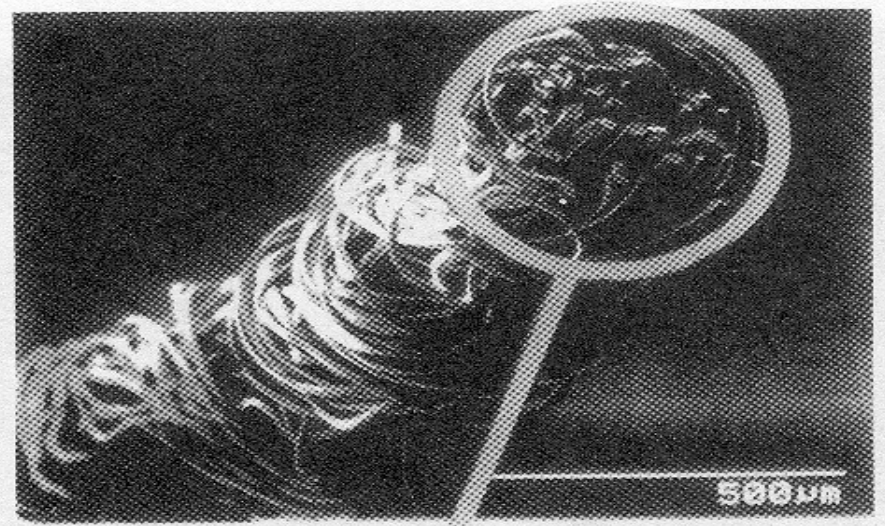


Figure 9: SEM view of shingosen (new silky type, Sillook Royal S®)



# New Spun Type Shingosen

CRC  
for  
Premium  
Quality  
Wool



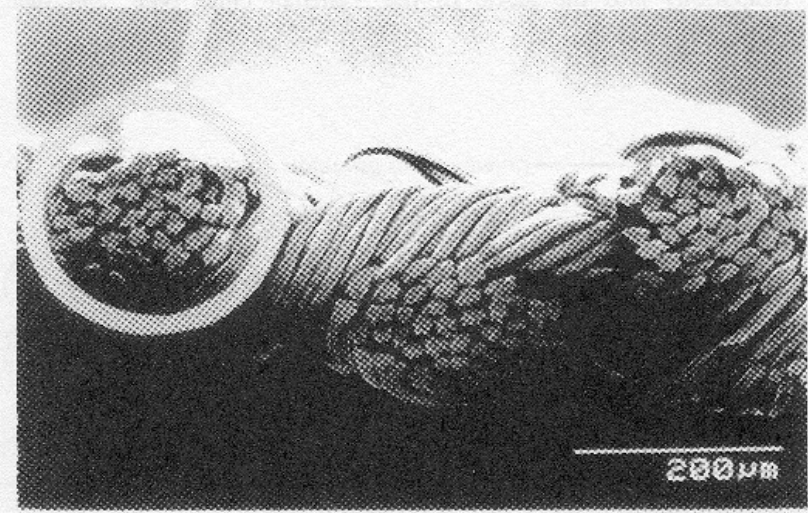
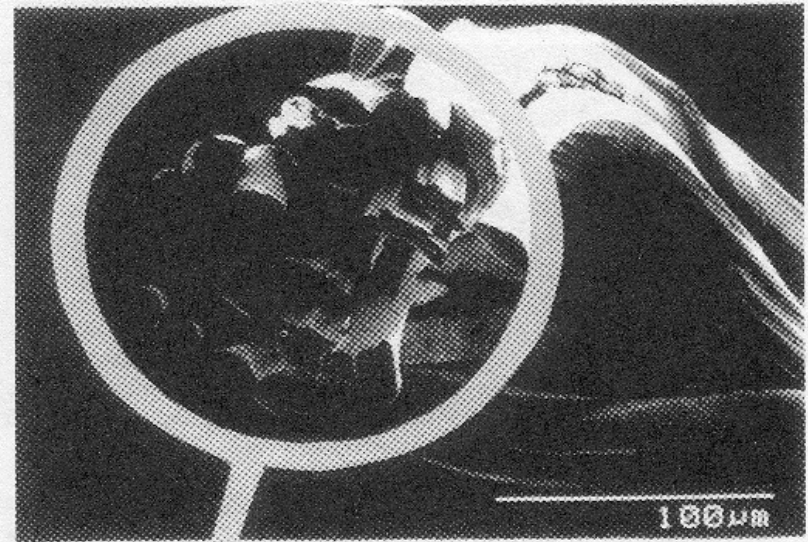
MALOR

Figure 10: SEM view of shingosen (new spun type, Malor®)



CRC  
for  
Premium  
Quality  
Wool

# Dry Touch Type Shingosen



CEO $\alpha$

Figure 11: SEM view of shingosen (dry touch type, CEO $\alpha$ )

Source: Okamoto, M. & Kajiwara, K. (1995)





# Major Reference

- Okamoto, M. & Kajiwara, K. (1995), Engineering Future Products: Prospects for Applications for the New Materials and Processing, Proc. 76th World Conference of the Textile Institute, The Textile Institute

CRC

for

Premium

Quality

Wool